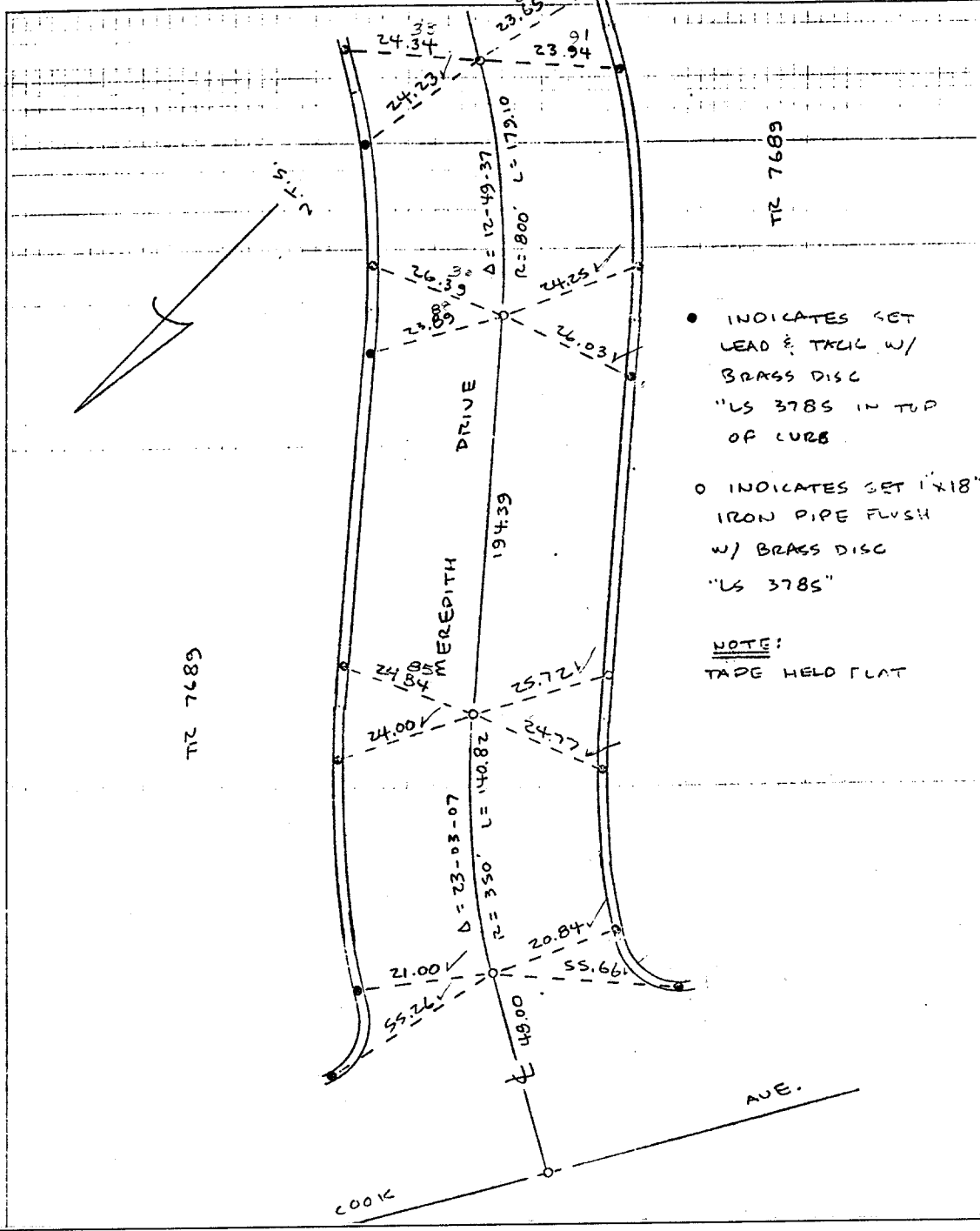


1508. TIF

STATE OF RIVERSIDE TRACT 7689 8-16-78 J.O. 205-21
 PARTY NO. AND MEMBERS BARRIE - LANTZ F.B. PAGE 2 OF 6
 NOTES CALC'D BY: CALLS CHECKED BY: PLAT NO.: WEAHER:

COOK AVE (MEREDITH DR.) @ BCR



- INDICATES SET LEAD & TK/LC W/ BRASS DISC "LS 3785 IN TOP OF CURB"
 - INDICATES SET 1" X 18" IRON PIPE FLUSH W/ BRASS DISC "LS 3785"
- NOTE:
TAPE HELD FLAT

- ✕ FD. Ramset Nail on T/C
- FD. "C" Nail on T/C
- FD. LD. & TK. on T/C
- Set LD. & TK. on T/C

Street: COOK AVE
 X-Street: MEREDITH DR.
 OFFICIAL USE ONLY

Scale:
 Date:
 Drawn by:
 W.O.:
 F.B.:

OFFICIAL TIE PLAT
CITY OF RIVERSIDE

These ties are for the purpose of perpetuating the found monumentation. No claim is made as to the relationship of the points or lines shown hereon to true boundary locations.

Sheet 1 of 1
 File No.: