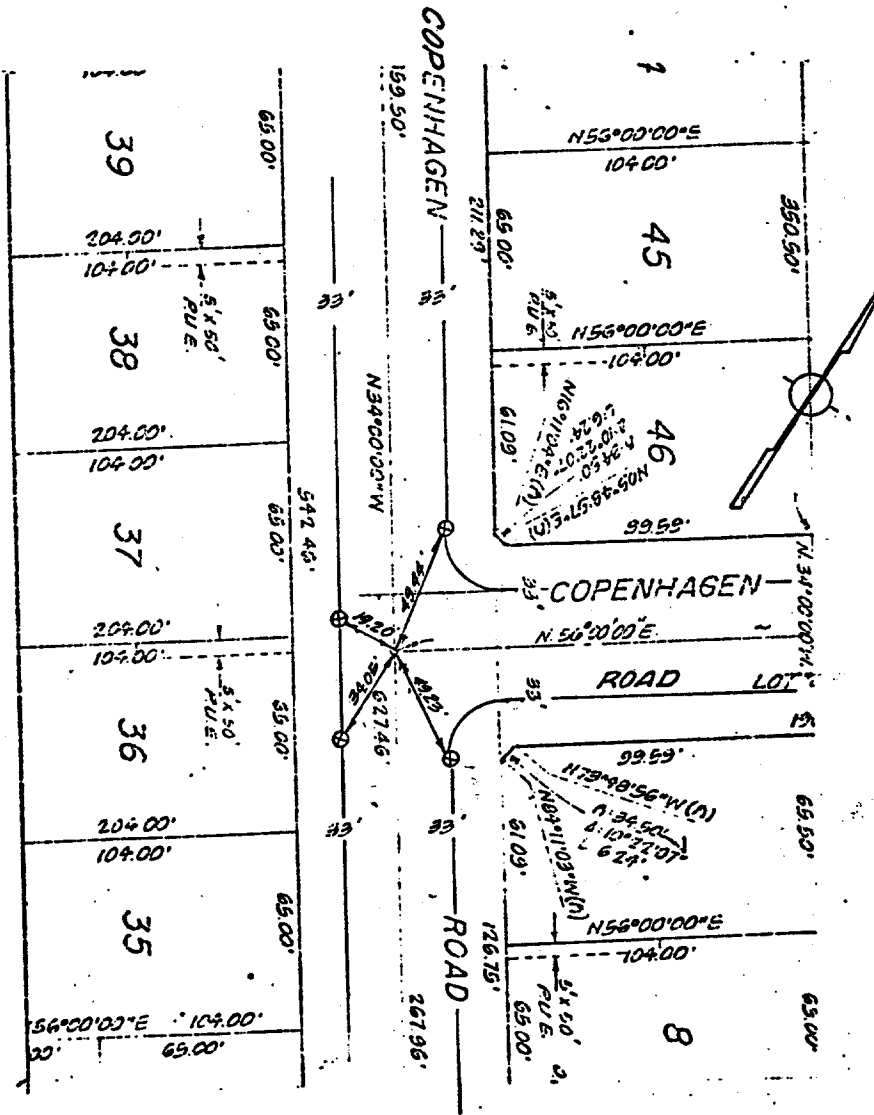


1520.TIF

Street: COPENHAGEN RD

X-Street: MONROE ST.  
OFFICIAL USE ONLY



- ⊙ Indicates Riverside County Standard No. 903 Type "B" Monument (1/2" Brass Cap Stamped R.C.E. 862).
- ⊚ Indicates Riverside County Standard No. 902 Type "A" Monument (1/4" Iron Pipe Tagged R.C.E. 862).
- ⊙ Indicates Set Nail & Tagged R.C.E. 862 In Curb.
- Indicates Set Nail In Curb.

DAVIDSON ASSOCIATES  
426 TENTH STREET  
RIVERSIDE, CALIFORNIA

MONUMENT TIES  
FOR TRACT 7075-1

SHEET NO. 2 OF 6  
DATE SEPT. 1977  
SCALE 1" = 50'

- ⊗ FD. Ramset Nail on T/C
- FD. "C" Nail on T/C

- FD. LD. & TK. on T/C
- Set LD. & TK. on T/C

## OFFICIAL TIE PLAT CITY OF RIVERSIDE

These ties are for the purpose of perpetuating the found monumentation. No claim is made as to the relationship of the points or lines shown hereon to true boundary locations.

Sheet 1 of 1  
File No.:

Scale:

Date:

Drawn by:

W.O.:

F.B.: