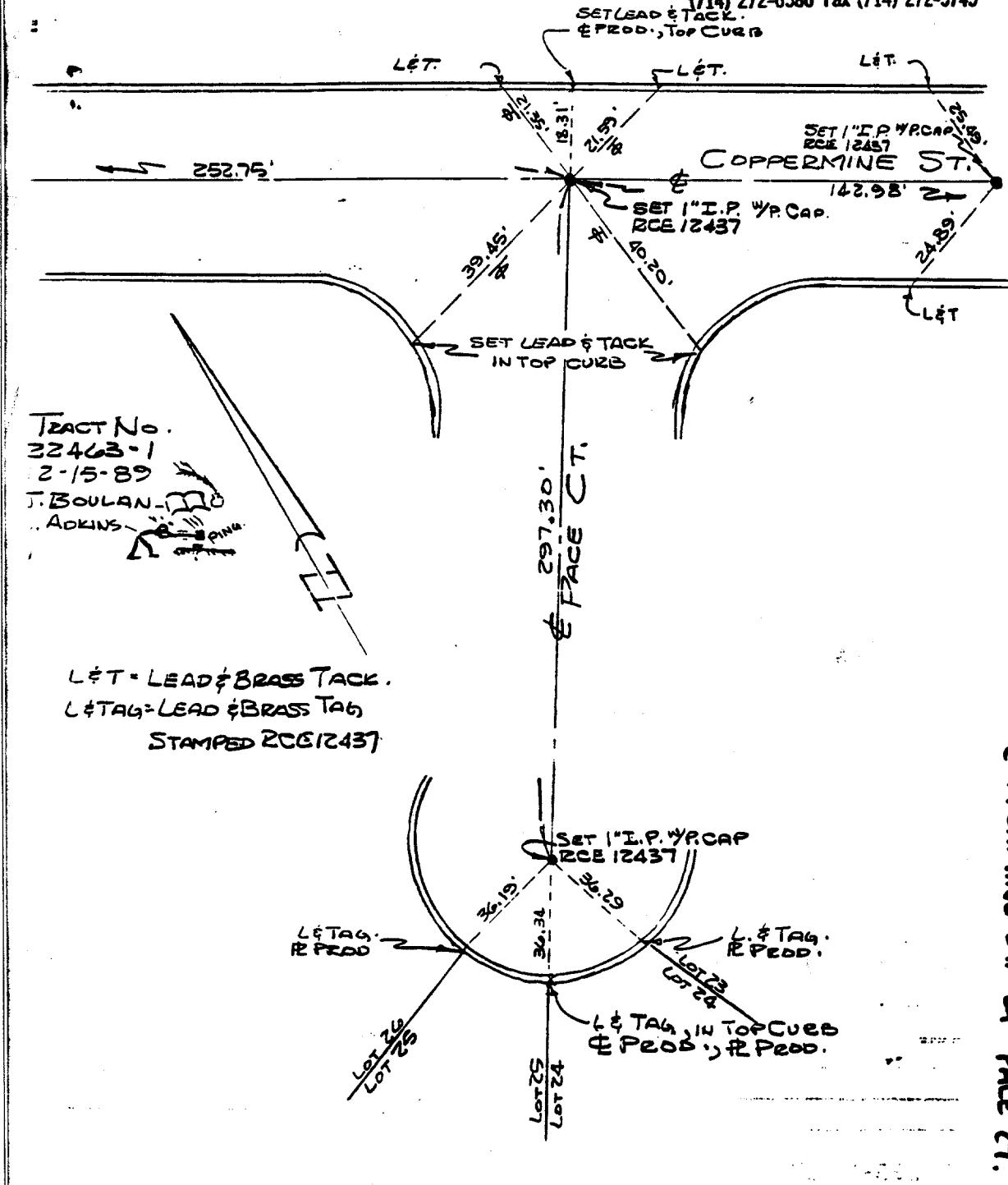


1524.TIF

JUN CORPORATION
 1921 E. Sampson Avenue
 Corona, CA 91719
 (714) 272-6580 Fax (714) 272-5745



TRACT No.
 22463-1
 2-15-89
 J. BOULAN
 .. ADKINS

L&T = LEAD & BRASS TACK.
 L&TAG = LEAD & BRASS TAG
 STAMPED RCE 12437

- ✕ FD. Ramset Nail on T/C
- FD. LD. & TK. on T/C
- FD. "C" Nail on T/C
- Set LD. & TK. on T/C

Street: COPPERMINE ST. X-Street: PAGE CT.
 OFFICIAL USE ONLY

Scale:
 Date:
 Drawn by:
 W.O.:
 F.B.:

OFFICIAL TIE PLAT
CITY OF RIVERSIDE

These ties are for the purpose of perpetuating the found monumentation. No claim is made as to the relationship of the points or lines shown hereon to true boundary locations.

Sheet 1 of 1
 File No.: