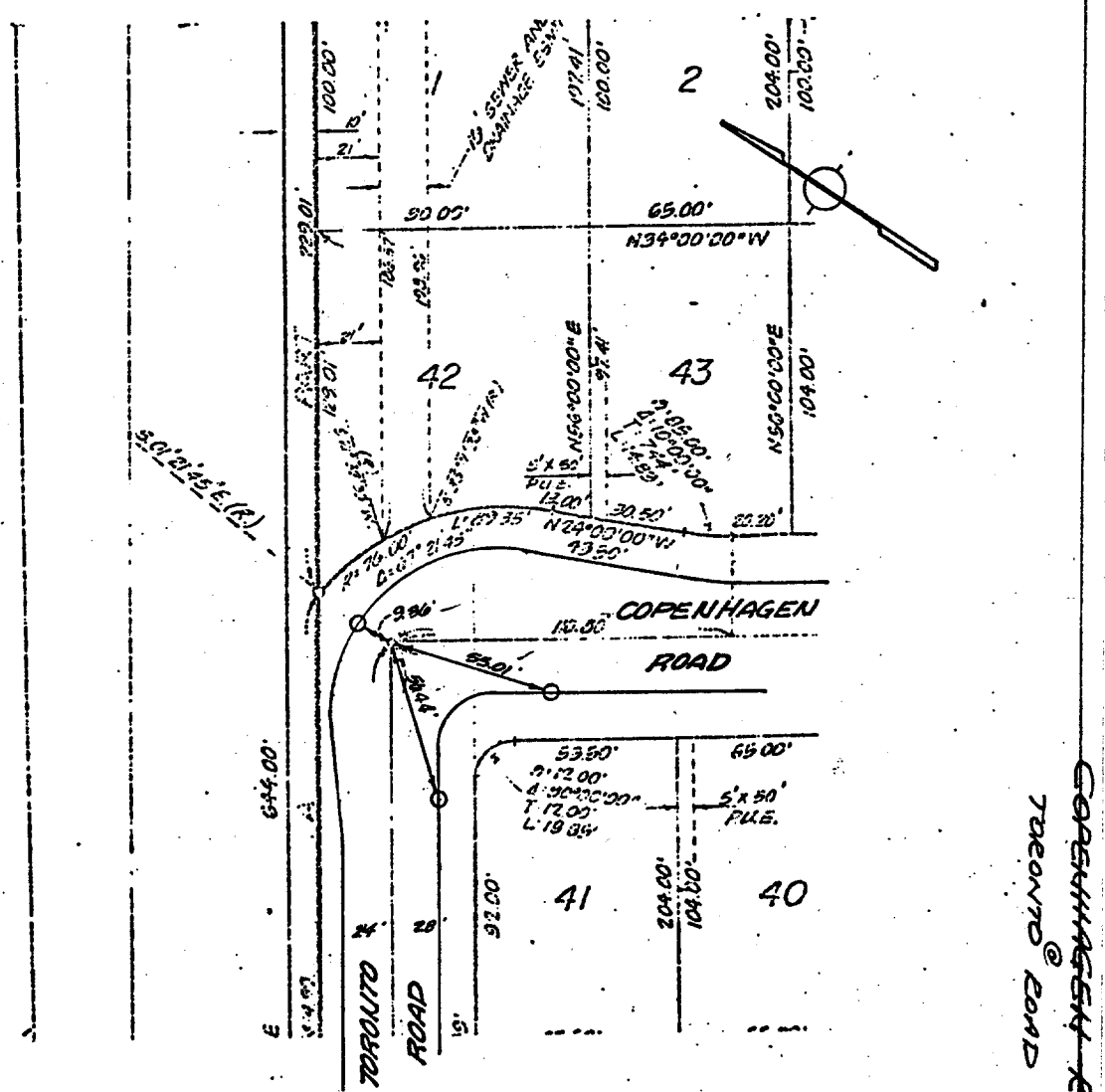


1528.TIF

Street: COPENHAGEN RD X-Street: TORONTO RD.
 OFFICIAL USE ONLY



- ⊙ Indicates Riverside County Standard No. 903 Type "B" Monument (1/2" Brass Cap Stamped R.C.E. 862).
- ⊙ Indicates Riverside County Standard No. 902 Type "A" Monument (1/4" Iron Pipe Tagged R.C.E. 862).
- ⊙ Indicates Set Nail & Tagged R.C.E. 832 In Curb.
- Indicates Set Nail In Curb.

DAVIDSON ASSOCIATES
 426 TENTH STREET
 VESIDE, CALIFORNIA

MONUMENT TIES
 FOR TRACT 7675-1

SHEET NO. 0 OF 0
 DATE SEPT. 1977
 SCALE 1" = 50'

- ⊗ FD. Ramset Nail on T/C
- FD. "C" Nail on T/C
- FD. LD. & TK. on T/C
- Set LD. & TK. on T/C

Scale:
 Date:
 Drawn by:
 W.O.:
 F.B.:

OFFICIAL TIE PLAT
 CITY OF RIVERSIDE

These ties are for the purpose of perpetuating the found monumentation. No claim is made as to the relationship of the points or lines shown hereon to true boundary locations.

Sheet 1 of 1
 File No.: