

1542. TIF

Street: COPPERMINE ST.

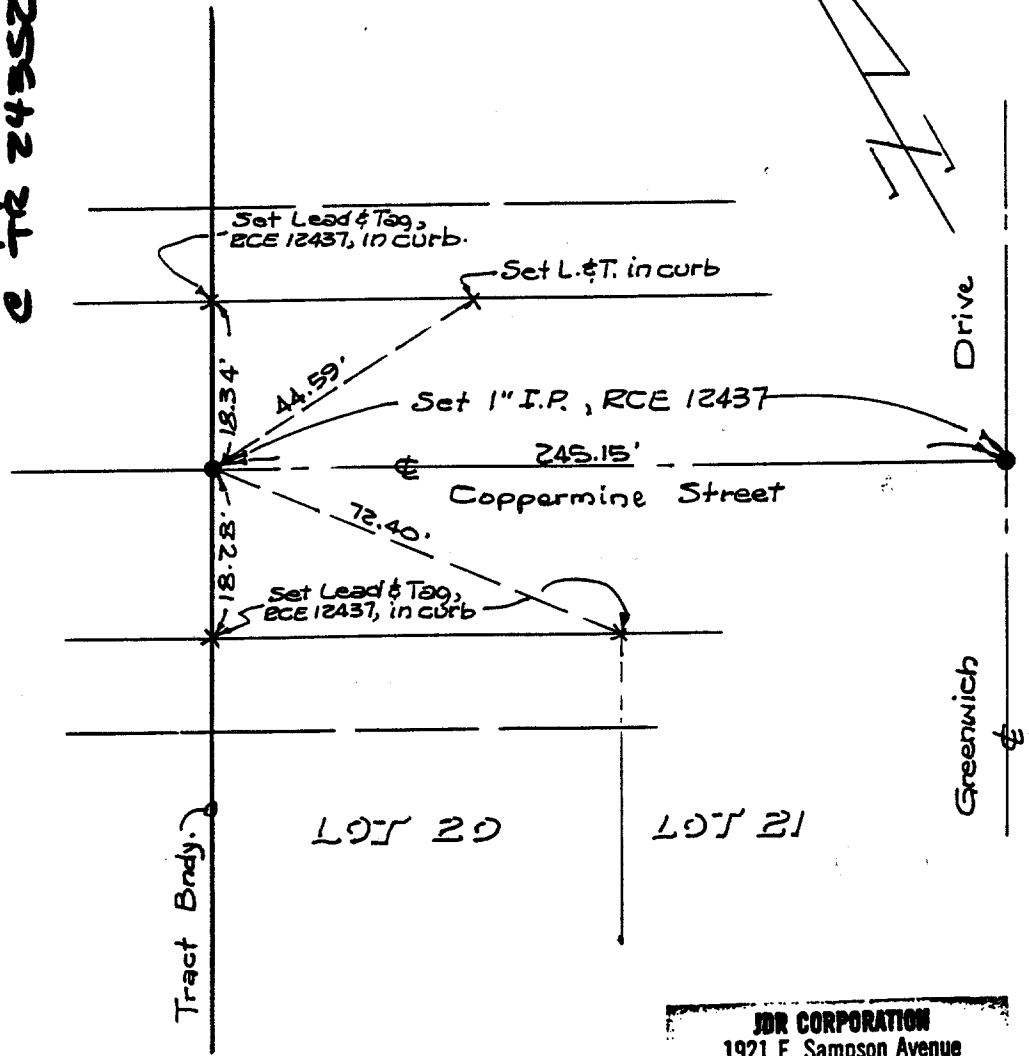
OFFICIAL USE ONLY

X-Street: TR 24352-1 BNDY

COPPERMINE ST.
E TR 24352-1 BNDY.

± Ties, Coppermine & Tr. Bndy.
JDE Corporation (JB-JE) 12-13-70
TR 24352-1

8
COPPERMINE ST



JDR CORPORATION
1921 E. Sampson Avenue
Corona, CA 91719
(714) 272-6580 Fax (714) 272-5745

- ✕ FD. Ramset Nail on T/C
- FD. "C" Nail on T/C

- FD. LD. & TK. on T/C
- Set LD. & TK. on T/C

Scale:
Date:
Drawn by:
W.O.:
F.B.:

OFFICIAL TIE PLAT
CITY OF RIVERSIDE

These ties are for the purpose of perpetuating the found monumentation. No claim is made as to the relationship of the points or lines shown hereon to true boundary locations.

Sheet 1 of 1
File No.: