

1544.TIF

Q TIES TRACI 2352U

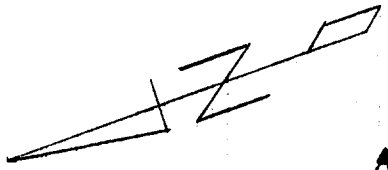
SHEET 5 OF 7

JN 133

NOT TO SCALE

JULY 1989

SEE SHEET NO. 4

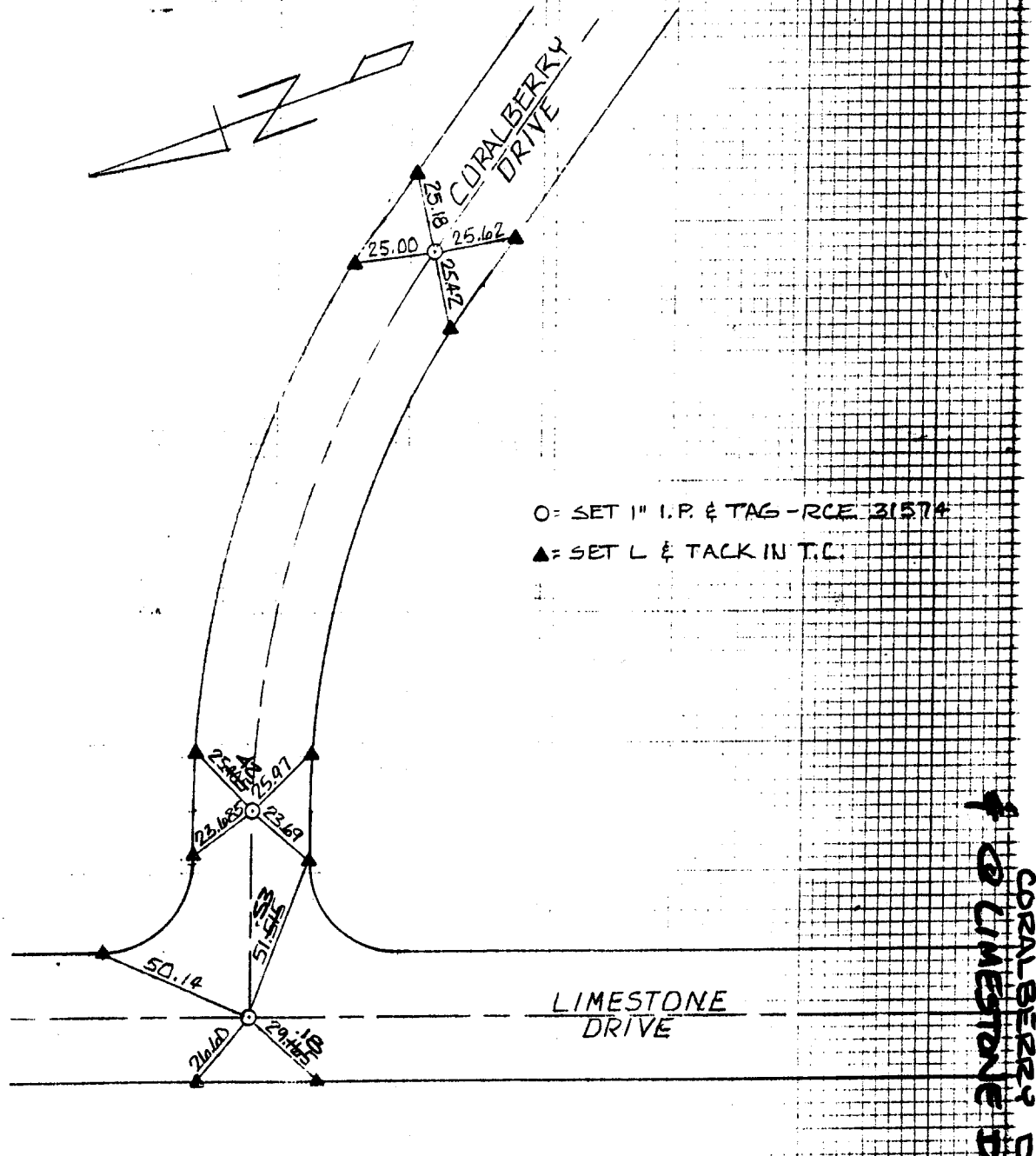


CORAL BERRY DRIVE

○ = SET 1" I.P. & TAG - RCE 31574

▲ = SET L & TACK IN T.C.

SEE SHEET NO. 6



CORAL BERRY DR
LIMESTONE DR

- ✕ FD. Ramset Nail on T/C
- FD. "C" Nail on T/C

- FD. LD. & TK. on T/C
- Set LD. & TK. on T/C

Scale:

Date:

Drawn by:

W.O.:

F.B.:

OFFICIAL TIE PLAT CITY OF RIVERSIDE

These ties are for the purpose of perpetuating the found monumentation. No claim is made as to the relationship of the points or lines shown hereon to true boundary locations.

Sheet 1 of 1

File No.:

Street: CORAL BERRY DR

OFFICIAL USE ONLY

X-Street: LIMESTONE DR