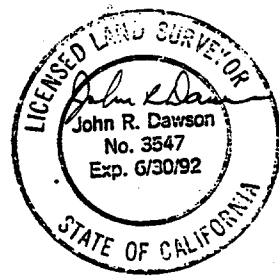
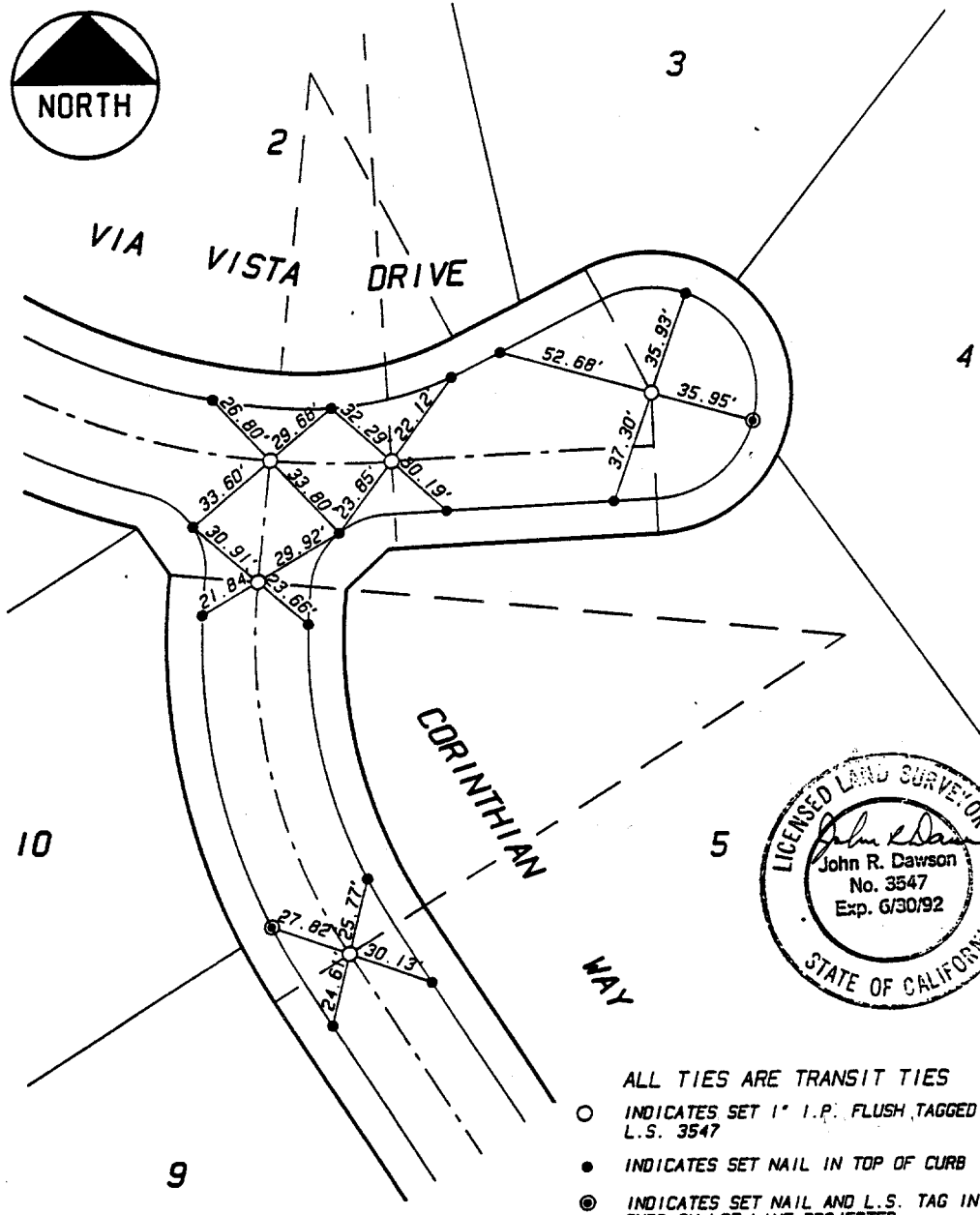


1554.715

Street: CORINTHIAN WAY
X-Street: VIA VISTA DR.
OFFICIAL USE ONLY

SHEET 2 OF 5



- ALL TIES ARE TRANSIT TIES
- INDICATES SET 1" I.P. FLUSH TAGGED L.S. 3547
 - INDICATES SET NAIL IN TOP OF CURB
 - ⊙ INDICATES SET NAIL AND L.S. TAG IN CURB ON LOT LINE PROJECTED

CORINTHIAN WAY
S. OF VIA VISTA DR.

PLAT PREPARED BY:
INTEGRA ENGINEERING, INC.
LAND SURVEYORS * CIVIL ENGINEERS
621 E. CARNEGIE DRIVE, #120, SAN BERNARDINO, CA. 92408

CITY OF RIVERSIDE
MONUMENTATION TIE SHEET
TRACT No. 24082-1

- ⊗ FD. Ramset Nail on T/C
- FD. "C" Nail on T/C
- FD. LD. & TK. on T/C
- Set LD. & TK. on T/C

Scale: _____
 Date: _____
 Drawn by: _____
 W.O.: _____
 F.B.: _____

OFFICIAL TIE PLAT

CITY OF RIVERSIDE

These ties are for the purpose of perpetuating the found monumentation. No claim is made as to the relationship of the points or lines shown hereon to true boundary locations.

Sheet 1 of 1
File No.: