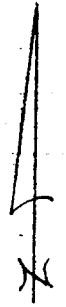


1556.TIF

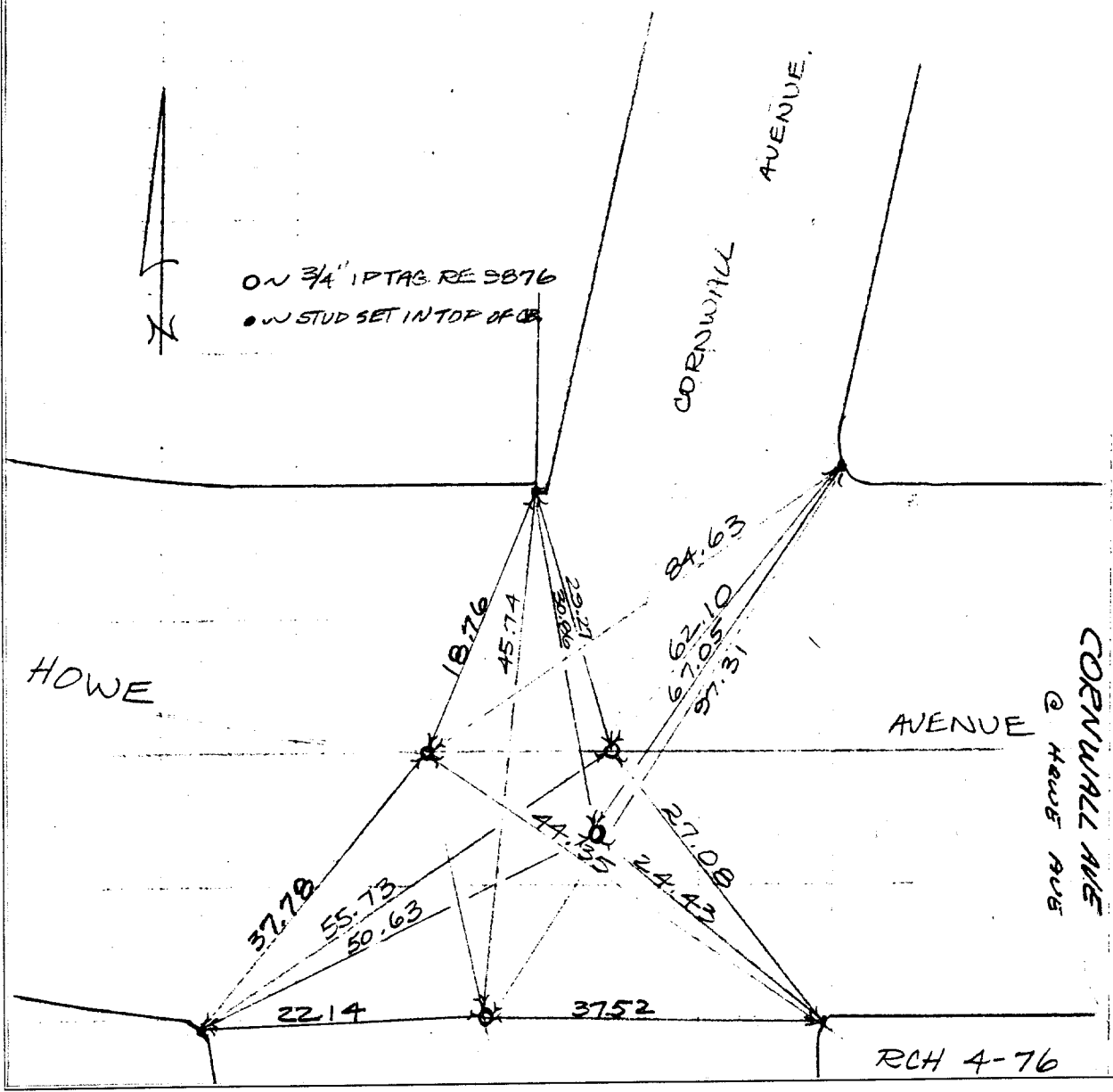
TRACT 2623
A.A. WEBB
F.B. 439-
498-
549-

SWING
TIES

HOWE AVE
COPY
CHECKED 6-69
JWS JR.



ON 3/4" IPTAG. RE 5876
● W STUD SET IN TOP OF CB



✕ FD. Ramset Nail on T/C
■ FD. "C" Nail on T/C

● FD. LD. & TK. on T/C
○ Set LD. & TK. on T/C

Street: **CORNWALL AVE**
X-Street: **HOWE**
OFFICIAL USE ONLY

Scale:
Date:
Drawn by:
W.O.:
F.B.:

OFFICIAL TIE PLAT CITY OF RIVERSIDE

These ties are for the purpose of perpetuating the found monumentation. No claim is made as to the relationship of the points or lines shown hereon to true boundary locations.

TRACT 2623
Sheet 1 of 1
File No.: