

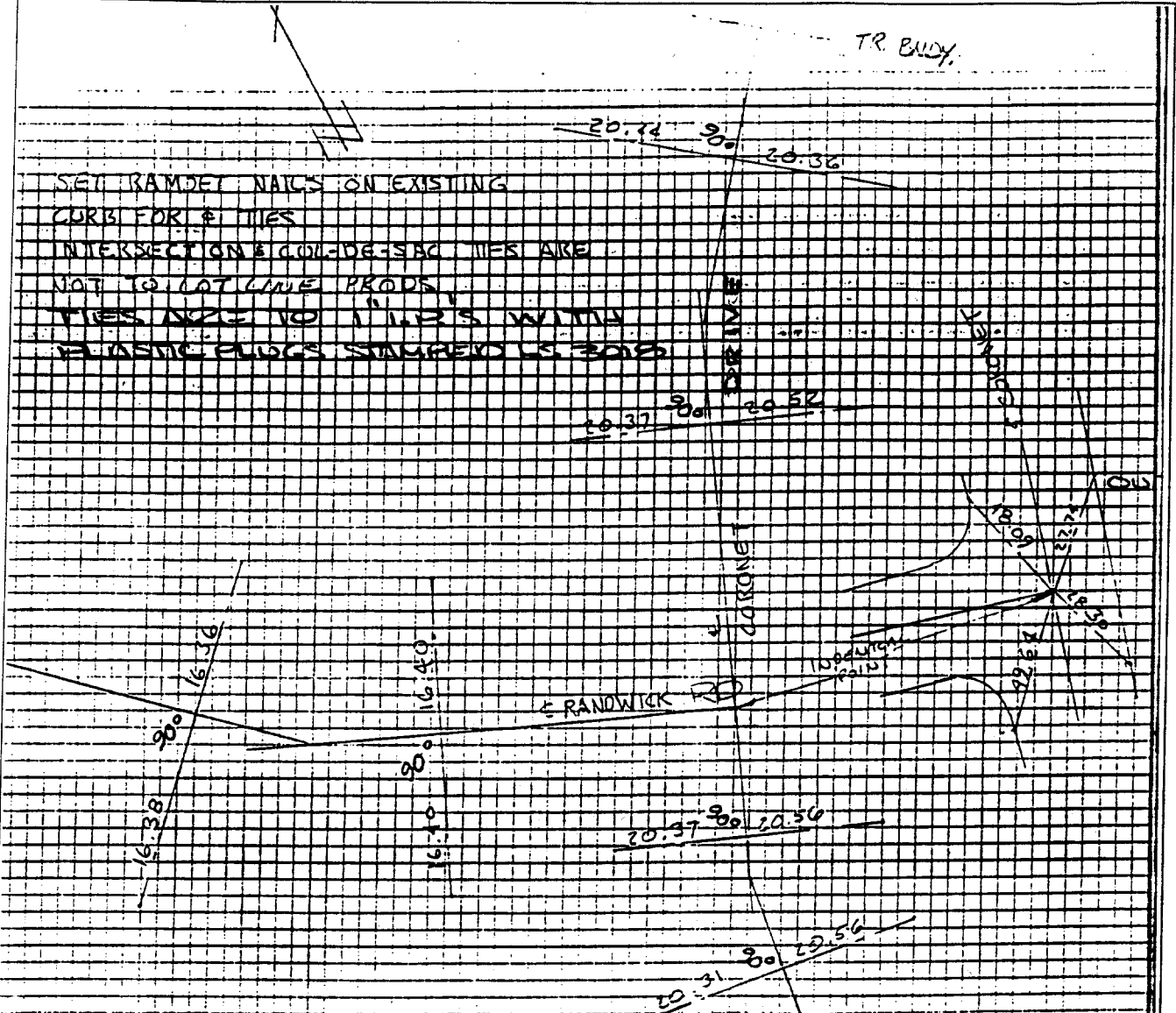
1560. TIF

Street: Coronet Dr.

OFFICIAL USE ONLY

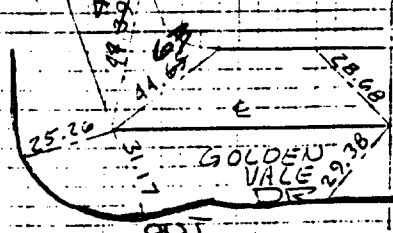
X-Street: BC - S'ly of Randwick Rd.

SET RAMDET NAILS ON EXISTING CURB FOR TIES INTERSECTION & COL-DG-350 TIES ARE NOT TO LOT LINE PRODS. TIES ARE TO 1" I.P.'S WITH PLASTIC PLUGS STAMPED LS 3018



J. F. DAVIDSON ASSOCIATES
CIVIL ENGINEERS • SURVEYORS • PLANNERS F.B. 82-2685/175

W.O.No. 82-7685 DATE 11-4-83
REF. _____ A.M. _____
SURVEY OF TR. 18376-1
FOR PRESLEY & TIES
SURVEY PARTY GARCIA, ANDREWS, SERILYEDA



TIE SHEETS

- ✕ FD. Ramset Nail on T/C
- FD. LD. & TK. on T/C
- FD. "C" Nail on T/C
- Set LD. & TK. on T/C

Scale:
Date:
Drawn by:
W.O.:
F.B.:

OFFICIAL TIE PLAT CITY OF RIVERSIDE

These ties are for the purpose of perpetuating the found monumentation. No claim is made as to the relationship of the points or lines shown hereon to true boundary locations.

Sheet 1 of 1
File No.: