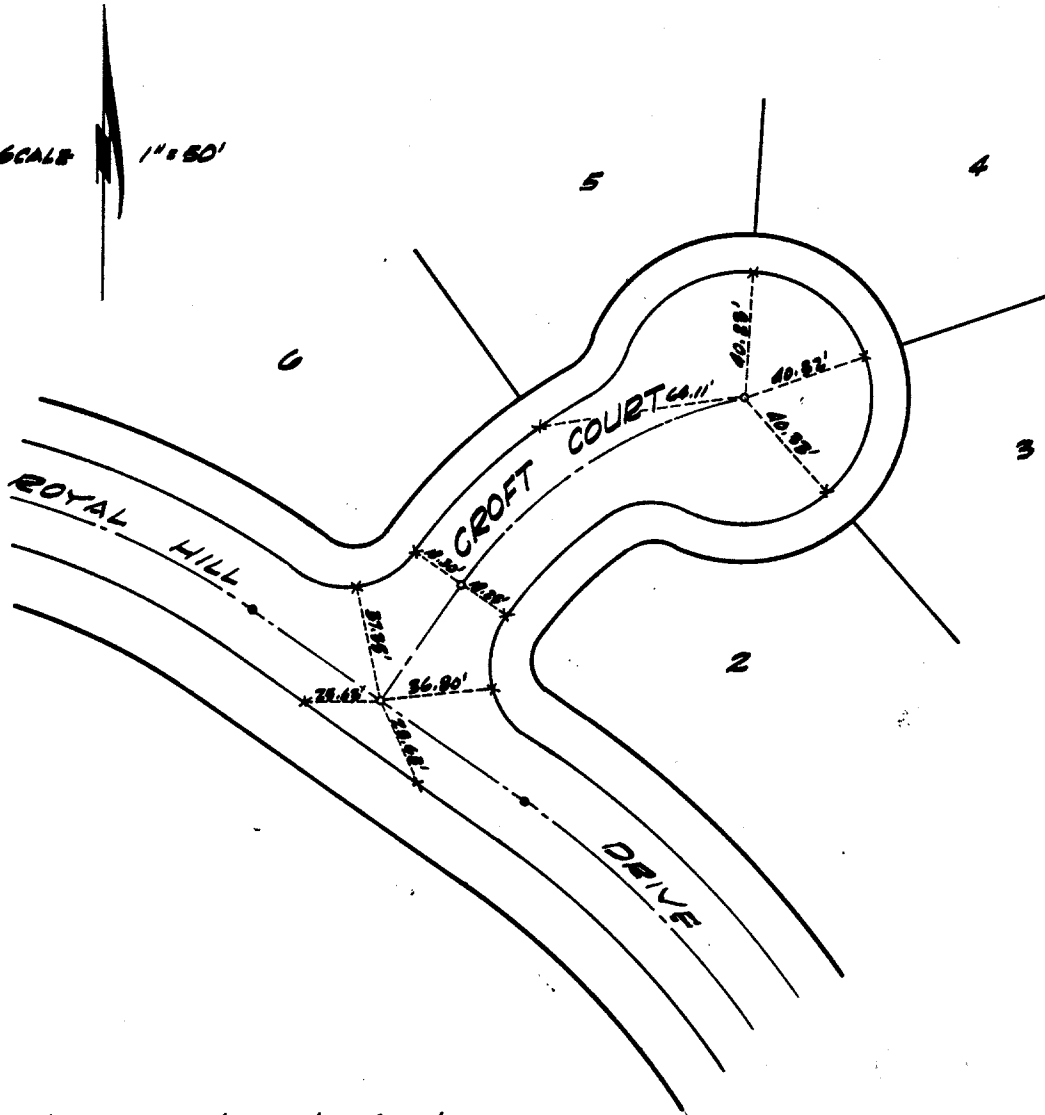


1614. TIF

TRACT NO. 3737 AT ROYAL HILL DRIVE

Being a subdivision of a portion of the southwest quarter of Section 36 T25-R5N, S.R.B. 9M. & Lot 1 of Tract 2827 M.B. 22/80-81 Rev. Co. Rec.

SCALE 1" = 50'



- x Set "sure fire" studs in top of curb
- o Set 3/4" I.P. tagged R.E. 9876
- FOUND MONUMENTS

CROFT COURT
ROYAL HILL DR

ALBERT A. WEBB ASSOCIATES

P.B. 590
W.O. 67-412

- × FD. Ramset Nail on T/C
- FD. "C" Nail on T/C

- FD. LD. & TK. on T/C
- Set LD. & TK. on T/C

Street: CROFT COURT

X-Street: ROYAL HILL DR.
OFFICIAL USE ONLY

Scale:
Date:
Drawn by:
W.O.:
F.B.:

OFFICIAL TIE PLAT CITY OF RIVERSIDE

These ties are for the purpose of perpetuating the found monumentation. No claim is made as to the relationship of the points or lines shown hereon to true boundary locations.

Sheet 1 of 3
File No.: