

1617. TIF

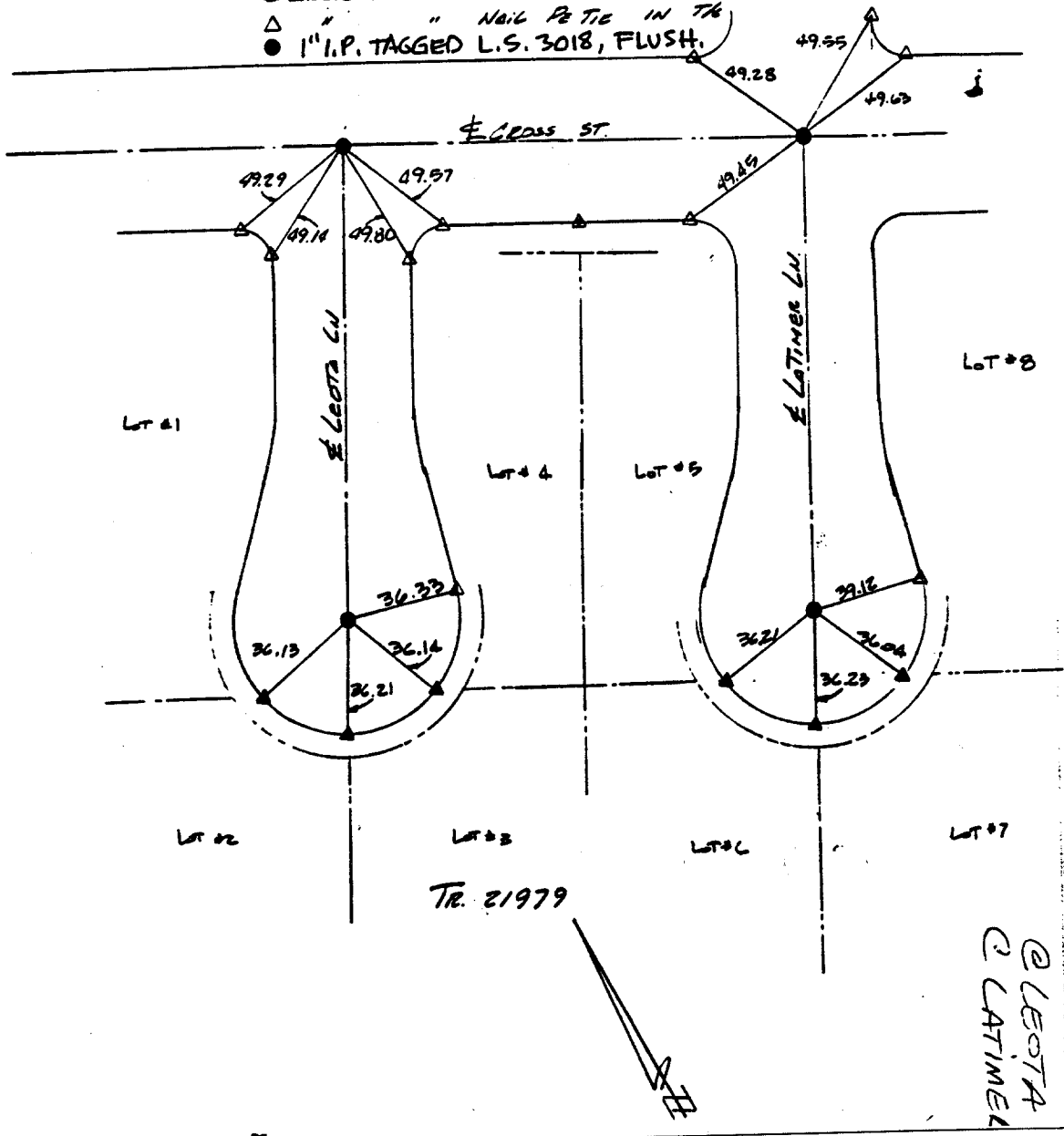
J.F. Davidson Associates, Inc.

90-11808/13

SURVEY OF FRONT TIES & E TIES
 FOR TR. 21979 HUESDER W.O. No. 90-11808 Date 11-29-90
 SURVEY PARTY BORRE, M. GURE, GONZALEZ REF. AM.

- ▲ INDICATES SET U.S. TAG L.S. 3018 RE FOUND IN T/C
- △ " " " NAIL P/TIC IN T/C
- 1" I.P. TAGGED L.S. 3018, FLUSH.

SURVEY NOTES



Street: CROSS ST.

OFFICIAL USE ONLY

X-Street: LEOTA & LATIMER

- ⊗ FD. Ramset Nail on T/C
- FD. LD. & TK. on T/C
- FD. "C" Nail on T/C
- Set LD. & TK. on T/C

Scale:
 Date:
 Drawn by:
 W.O.:
 F.B.:

OFFICIAL TIE PLAT
CITY OF RIVERSIDE

These ties are for the purpose of perpetuating the found monumentation. No claim is made as to the relationship of the points or lines shown hereon to true boundary locations.

Sheet 1 of 1
 File No.: