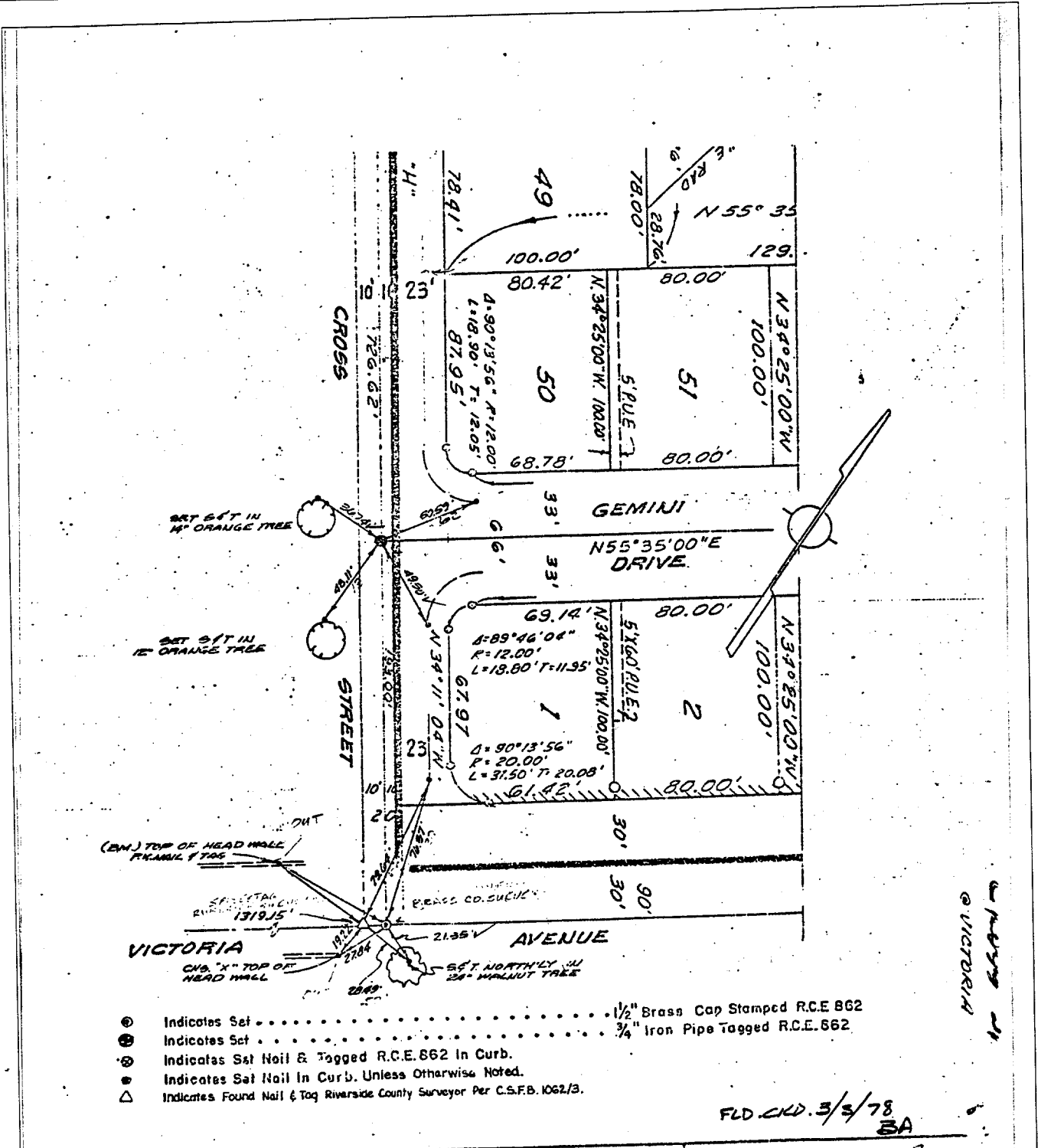


1620. TIF

Street: CROSS ST

X-Street: VICTORIA

OFFICIAL USE ONLY



- ⊙ Indicates Set 1/2" Brass Cap Stamped R.C.E. 862
- ⊕ Indicates Set 3/4" Iron Pipe Tagged R.C.E. 862
- ⊗ Indicates Set Nail & Tagged R.C.E. 862 In Curb.
- ⊙ Indicates Set Nail In Curb. Unless Otherwise Noted.
- △ Indicates Found Nail & Tag Riverside County Surveyor Per C.S.F.B. 1062/3.

FD. CLK. 3/3/78
BA

DAVIDSON ASSOCIATES
2400 TENTH STREET

MONUMENT TIES

SHEET NO. 1 OF 8
DATE FEB 1977

- ⊗ FD. Ramset Nail on T/C
- FD. LD. & TK. on T/C
- FD. "C" Nail on T/C
- Set LD. & TK. on T/C

OFFICIAL TIE PLAT
CITY OF RIVERSIDE

These ties are for the purpose of perpetuating the found monumentation. No claim is made as to the relationship of the points or lines shown hereon to true boundary locations.

TRACT 4915

Sheet 1 of 8

File No.:

Scale:
Date:
Drawn by:
W.O.:
F.B.: