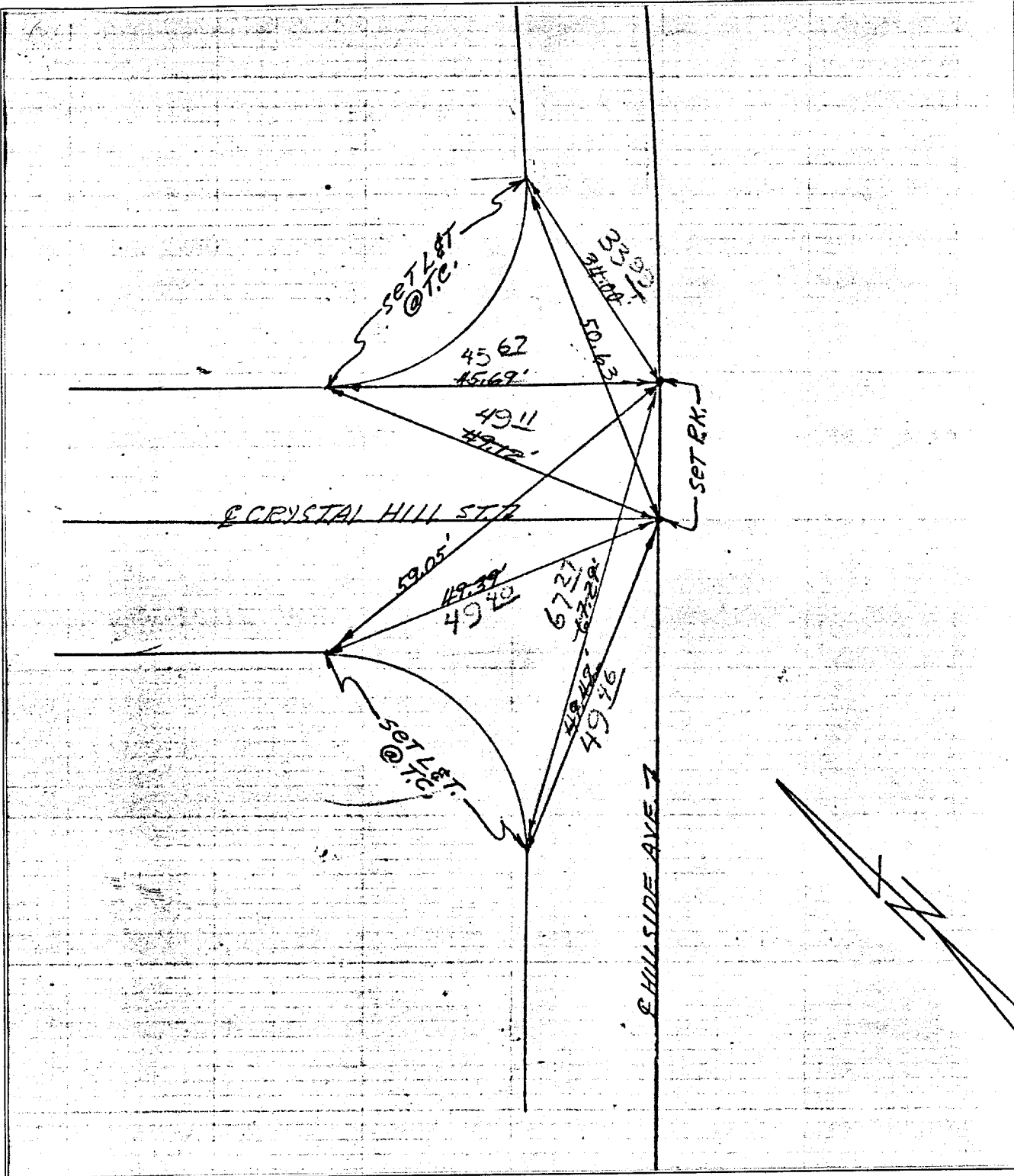


1631.TIF

Street: CRYSTAL HILL

X-Street: HILLSIDE AVE

OFFICIAL USE ONLY



- ✕ FD. Ramset Nail on T/C
- FD. "C" Nail on T/C

- FD. LD. & TK. on T/C
- Set LD. & TK. on T/C

OFFICIAL TIE PLAT
CITY OF RIVERSIDE

These ties are for the purpose of perpetuating the found monumentation. No claim is made as to the relationship of the points or lines shown hereon to true boundary locations.

Scale: _____
 Date: _____
 Drawn by: _____
 W.O.: _____
 F.B.: _____

Sheet 1 of 1
 File No.: _____