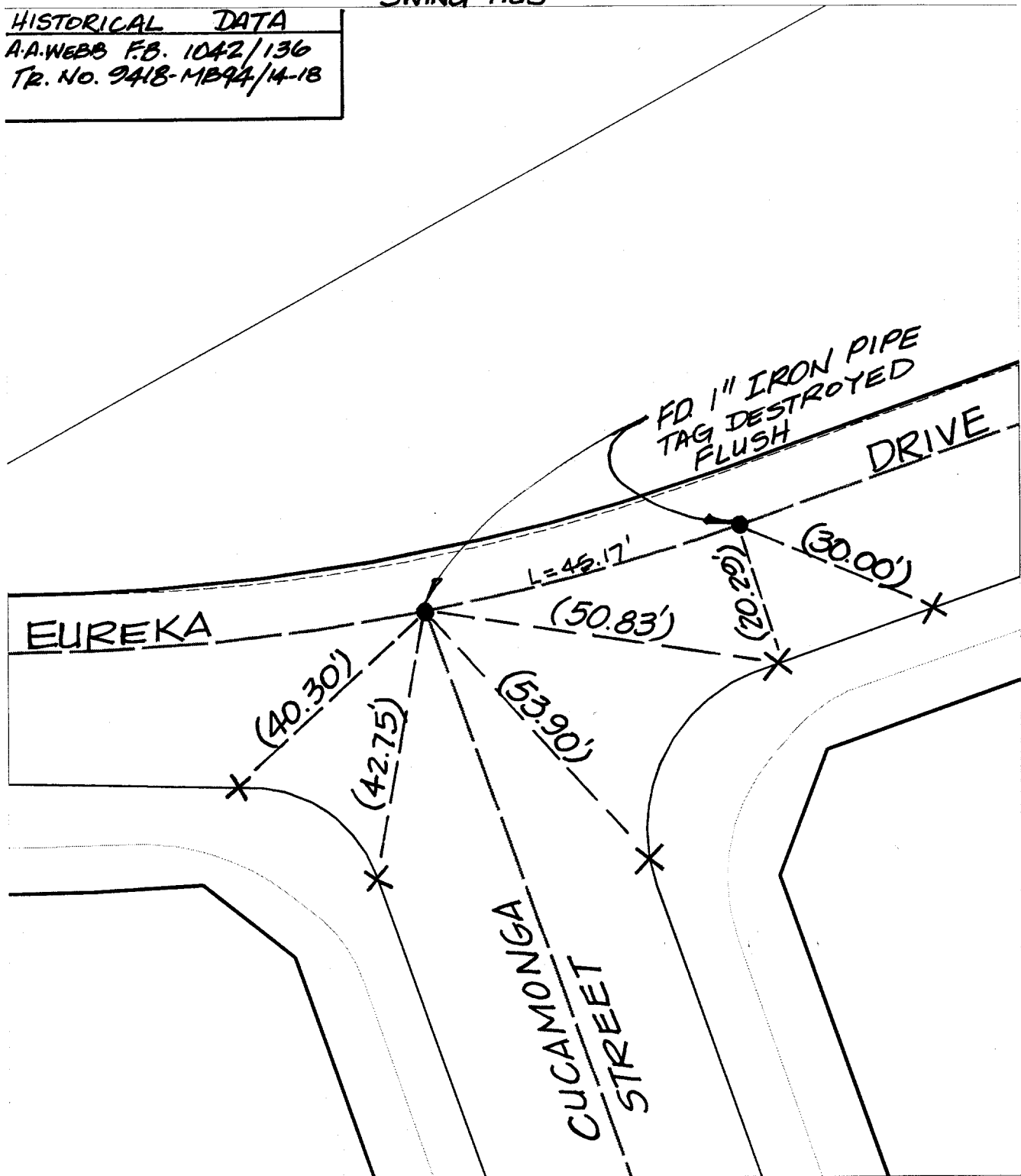


1432.71F

SWING TIES

HISTORICAL DATA

A.A.WEBB F.B. 1042/136
Tr. No. 9418-MB94/14-18



Street: EUREKA DR. & E.C.
X-Street: [REDACTED]
OFFICIAL USE ONLY

- ✕ FD. Ramset Nail on T/C
- FD. LD. & TK. on T/C
- FD. "C" Nail on T/C
- Set LD. & TK. on T/C

Scale: 1" = 20'

Date: 08/05/99

Drawn by: L. Harris, KGE

W.O.:

F.B.:

OFFICIAL TIE PLAT
CITY OF RIVERSIDE

These ties are for the purpose of perpetuating the found monumentation. No claim is made as to the relationship of the points or lines shown hereon to true boundary locations.



Sheet of
File No.: