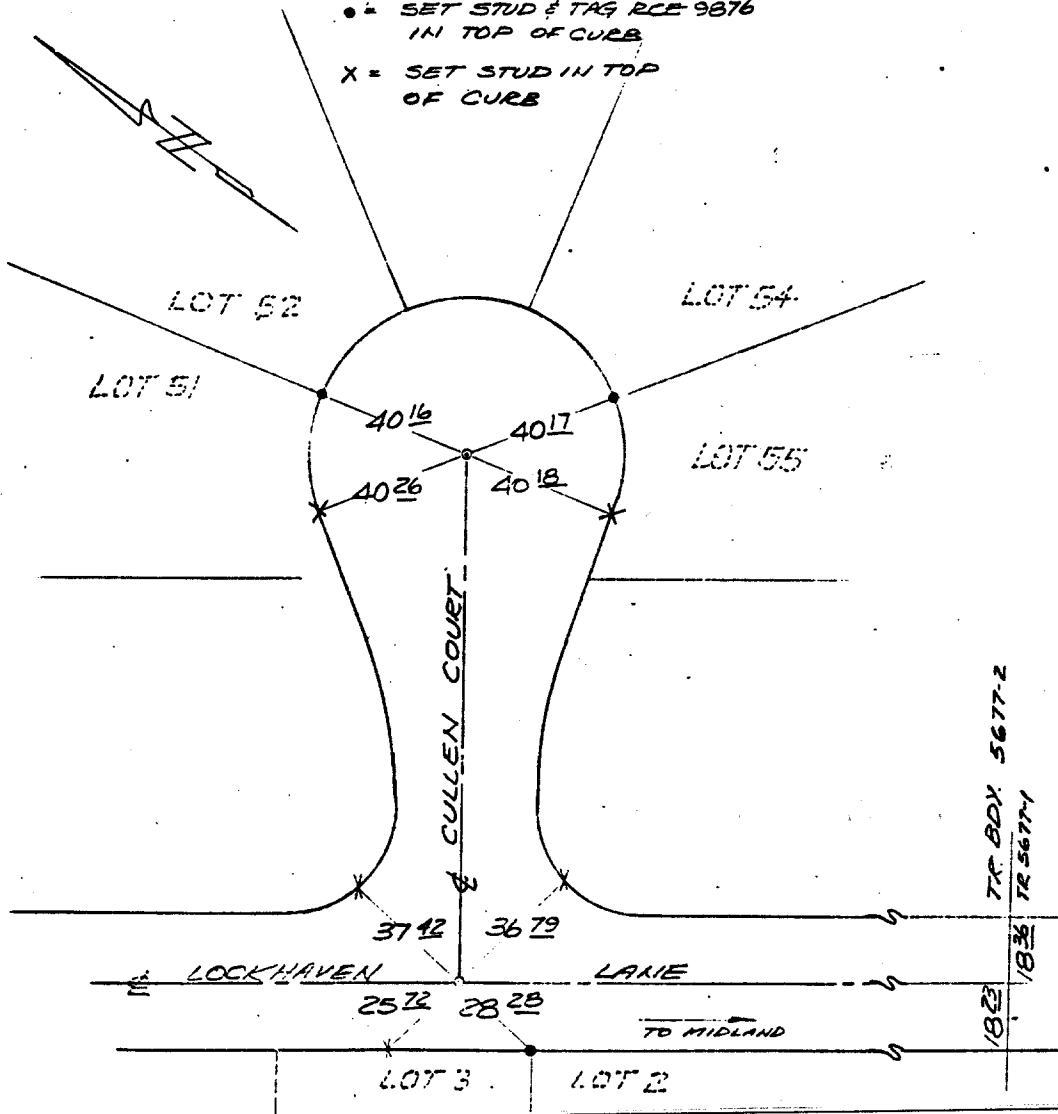


A.A. WEBB
 FB 1032/189
 TRACT 5677-2

TRANSIT TIES
 MB 84/76-78

AGUILETA
 EVANS
 DUNHAM
 12-2-76

- = SET 1" I.P. TAGGED
RCE 9876
- = SET STUD & TAG RCE 9876
IN TOP OF CURB
- X = SET STUD IN TOP
OF CURB



- ✕ FD. Ramset Nail on T/C
- FD. LD. & TK. on T/C
- FD. "C" Nail on T/C
- Set LD. & TK. on T/C

ect: CULLEN CT.
 X-Street: LOCKHAVEN LN
 OFFICIAL USE ONLY

Scale:
 Date:
 Drawn by:
 W.O.:
 F.B.:

OFFICIAL TIE PLAT
CITY OF RIVERSIDE

These ties are for the purpose of perpetuating the found monumentation. No claim is made as to the relationship of the points or lines shown hereon to true boundary locations.

Sheet 1 of 1
 File No.: