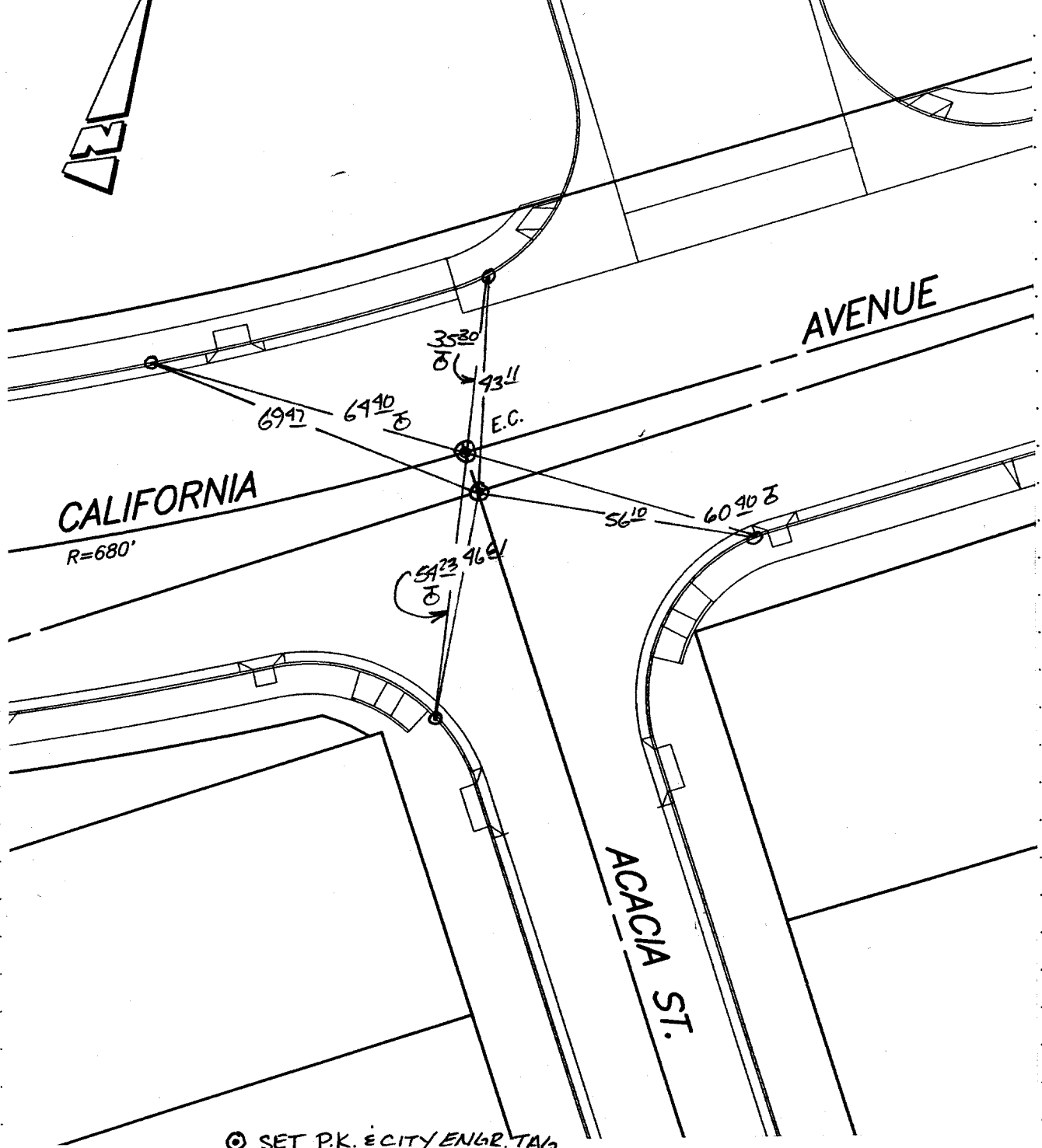


X-STREET ACACIA ST.

STREET CALIFORNIA AVE.

OFFICE USE ONLY



- ⊙ SET P.K. & CITY ENGR. TAG
- ✕ FD. Ramset Nail on T/C
- FD. "C" Nail on T/C
- FD. LD. & TK. on T/C
- SET LD. & TK. On T/C

SCALE: N.T.S.
 DATE: 4-7-97
 DR. BY: FINNEY, J
 W.O.:
 F.B.:

OFFICIAL TIE PLAT

CITY OF RIVERSIDE

These ties are for the purpose of perpetuating the found monumentation. No claim is made as to the relationship of the points or lines shown hereon to true boundary locations.

SHEET
 1
 OF 1 SHEETS
 FILE NO.: