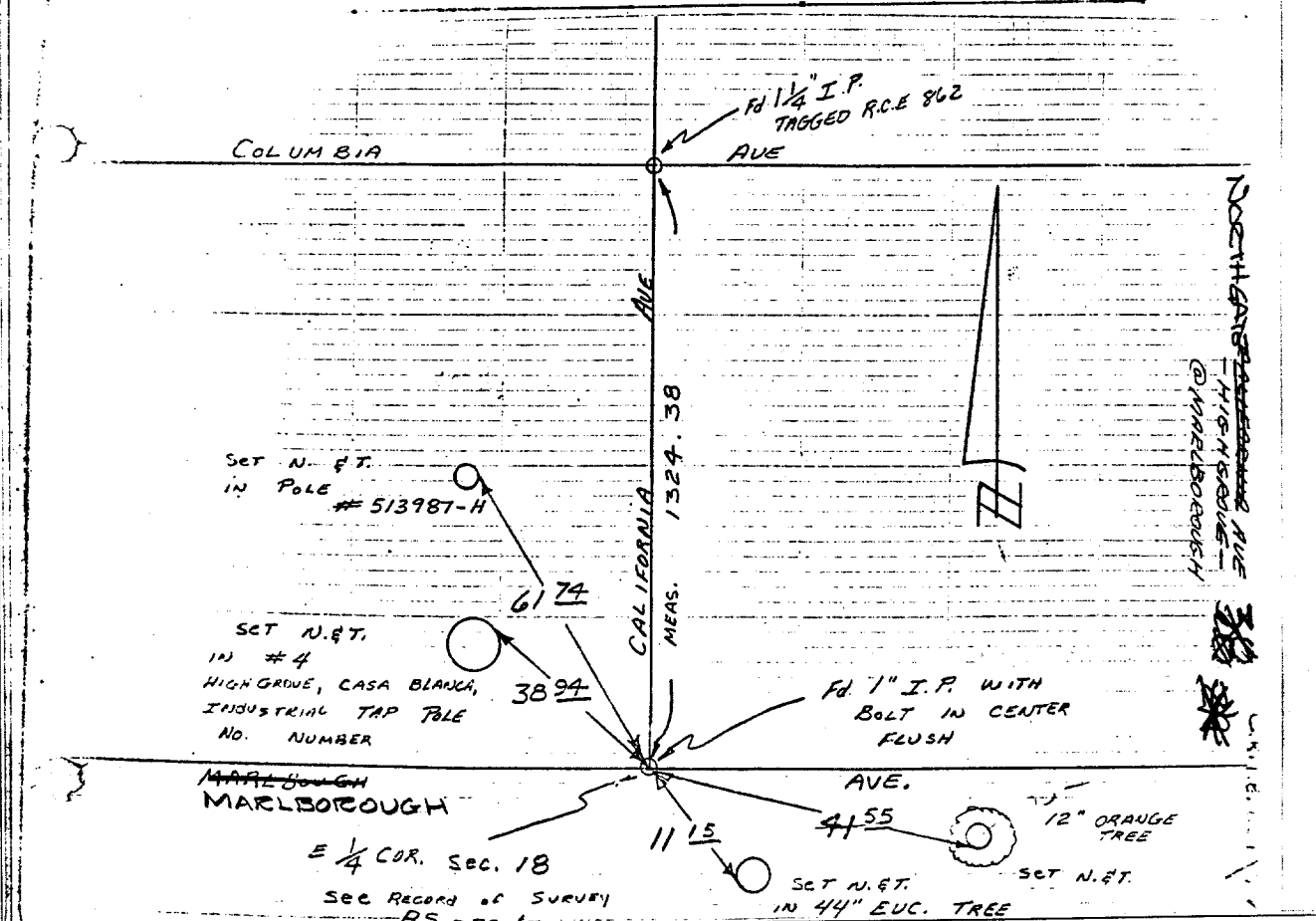


CALIFORNIA AVENUE (HIGH GROVE)
 AT
 MARLBOROUGH AVENUE.
 MARLBOROUGH

HISTORICAL DATA
 RECORD OF SURVEY 38/7
 CITY FB N-23
 RIV CNTY FB 980/69

SWING TIES

CREW
 6/21/68
 GRANDINETTE
 FRYC
 C.F.B. 851/47



✕ FD. Ramset Nail on T/C
 ■ FD. "C" Nail on T/C

● FD. LD. & TK. on T/C
 ○ Set LD. & TK. on T/C

OFFICIAL TIE PLAT
CITY OF RIVERSIDE

These ties are for the purpose of perpetuating the found monumentation. No claim is made as to the relationship of the points or lines shown hereon to true boundary locations.

Scale:
 Date:
 Drawn by:
 W.O.:
 F.B.:

Sheet 1 of 1
 File No.:

OFFICIAL USE ONLY

X-Street: COLUMBIA & MARLBOROUGH

St: CALIFORNIA AVE