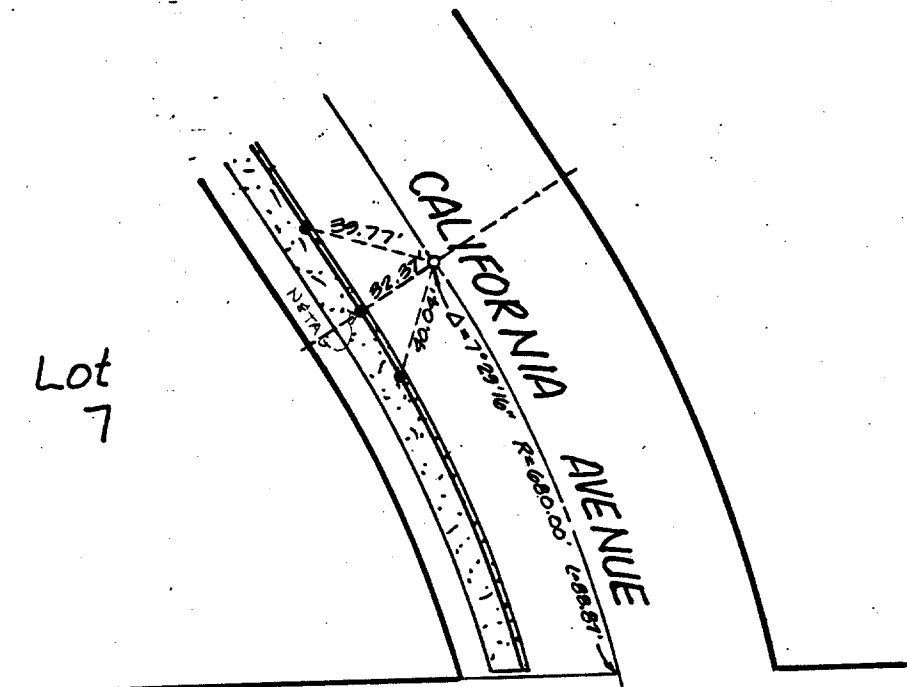
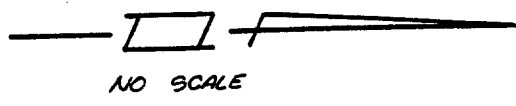


Lot
7



TRACT BOUNDARY

- Set Nail in Curb.
- ⊙ Set Nail and Tag, R.G.E. 16036 in Curb.
- Set 1 1/4" O.D. Iron Pipe, Tagged R.G.E. 16036, per Riv. Co. Std. 70", Flush.



4-12-85

w.o. 02164 Sheet ____ of ____ Sheets

L A WAINSCOTT & ASSOCIATES
 CIVIL ENGINEERS
 GRAND TERRACE CALIFORNIA

CITY OF RIVERSIDE

TRACT No. 8583 #4

CALIFORNIA AVE

- × FD. Ramset Nail on T/C
- FD. "C" Nail on T/C

- FD. LD. & TK. on T/C
- Set LD. & TK. on T/C

Scale:
 Date:
 Drawn by:
 W.O.:
 F.B.:

OFFICIAL TIE PLAT
 CITY OF RIVERSIDE

These ties are for the purpose of perpetuating the found monumentation. No claim is made as to the relationship of the points or lines shown hereon to true boundary locations.

Sheet 1 of 1
 File No.: