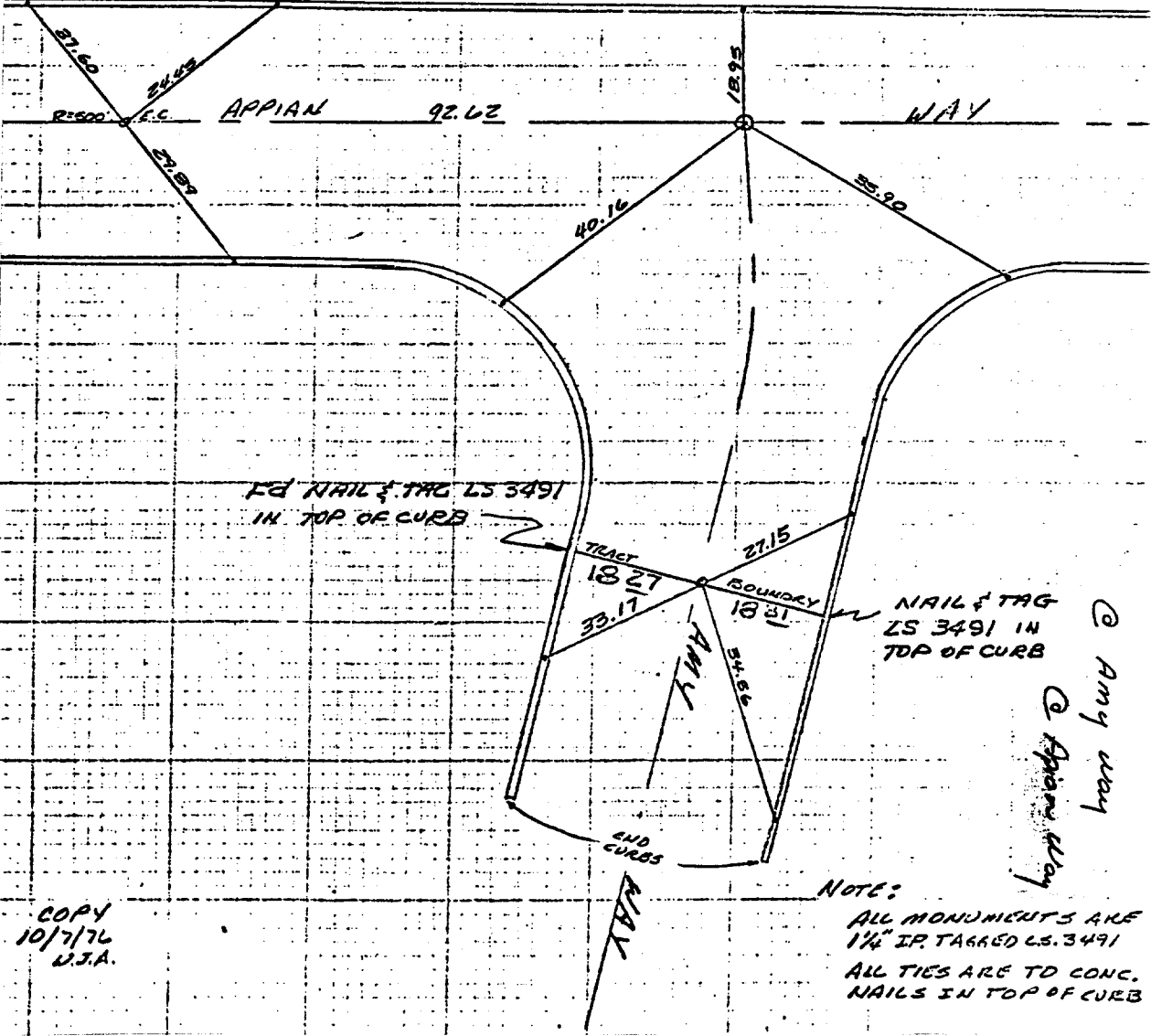
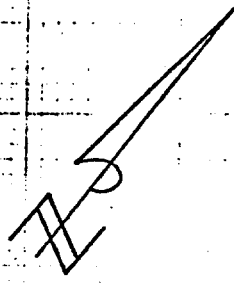


173.71F

SWING TIES



COPY
10/7/76
U.S.A.

NOTE:
ALL MONUMENTS ARE
1 1/4" I.P. TAGGED L.S. 3491
ALL TIES ARE TO CONC.
NAILS IN TOP OF CURB

- ✕ FD. Ramset Nail on T/C
- FD. LD. & TK. on T/C
- FD. "C" Nail on T/C
- Set LD. & TK. on T/C

Street: AMY WAY

X-Street: APPIAN WAY

OFFICIAL USE ONLY

Scale:
Date:
Drawn by:
W.O.:
F.B.:

OFFICIAL TIE PLAT

CITY OF RIVERSIDE

These ties are for the purpose of perpetuating the found monumentation. No claim is made as to the relationship of the points or lines shown hereon to true boundary locations.

Sheet 1 of 1
File No.: