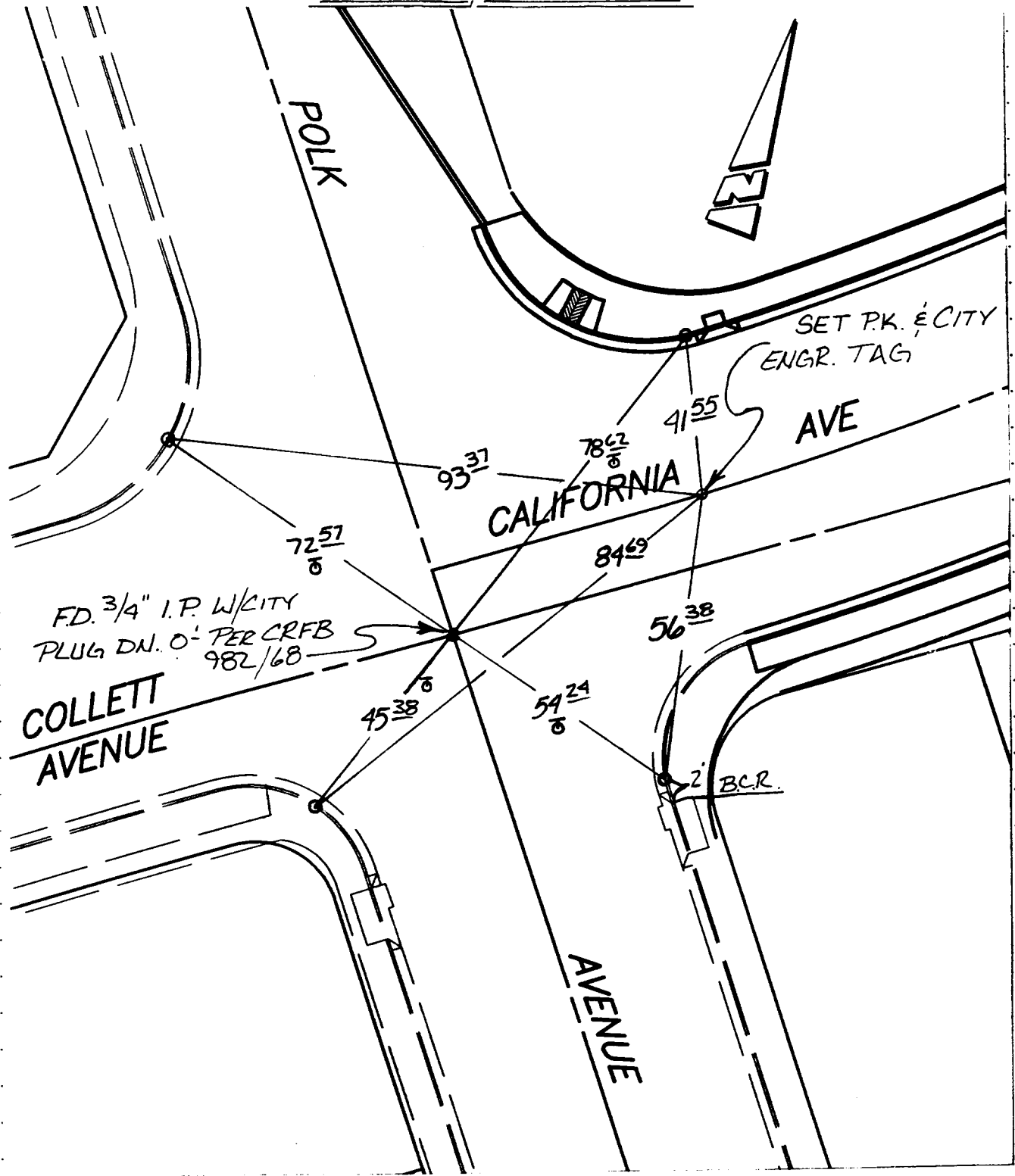


67

X-STREET COLLETT AVE
OFFICE USE ONLY
POLK AVE.
STREET CALIFORNIA AVE

TRANSIT & SWING TIES



- ✕ FD. Ramset Nail on T/C
- FD. LD. & TK. on T/C
- FD. "C" Nail on T/C
- SET LD. & TK. On T/C

SCALE: N.T.S.
DATE: 3-17-97
DR. BY: J. FINNEY
W.O.:
F.B.:

OFFICIAL TIE PLAT
CITY OF RIVERSIDE

These ties are for the purpose of perpetuating the found monumentation. No claim is made as to the relationship of the points or lines shown hereon to true boundary locations.

SHEET
1
OF 1 SHEETS
FILE NO.: