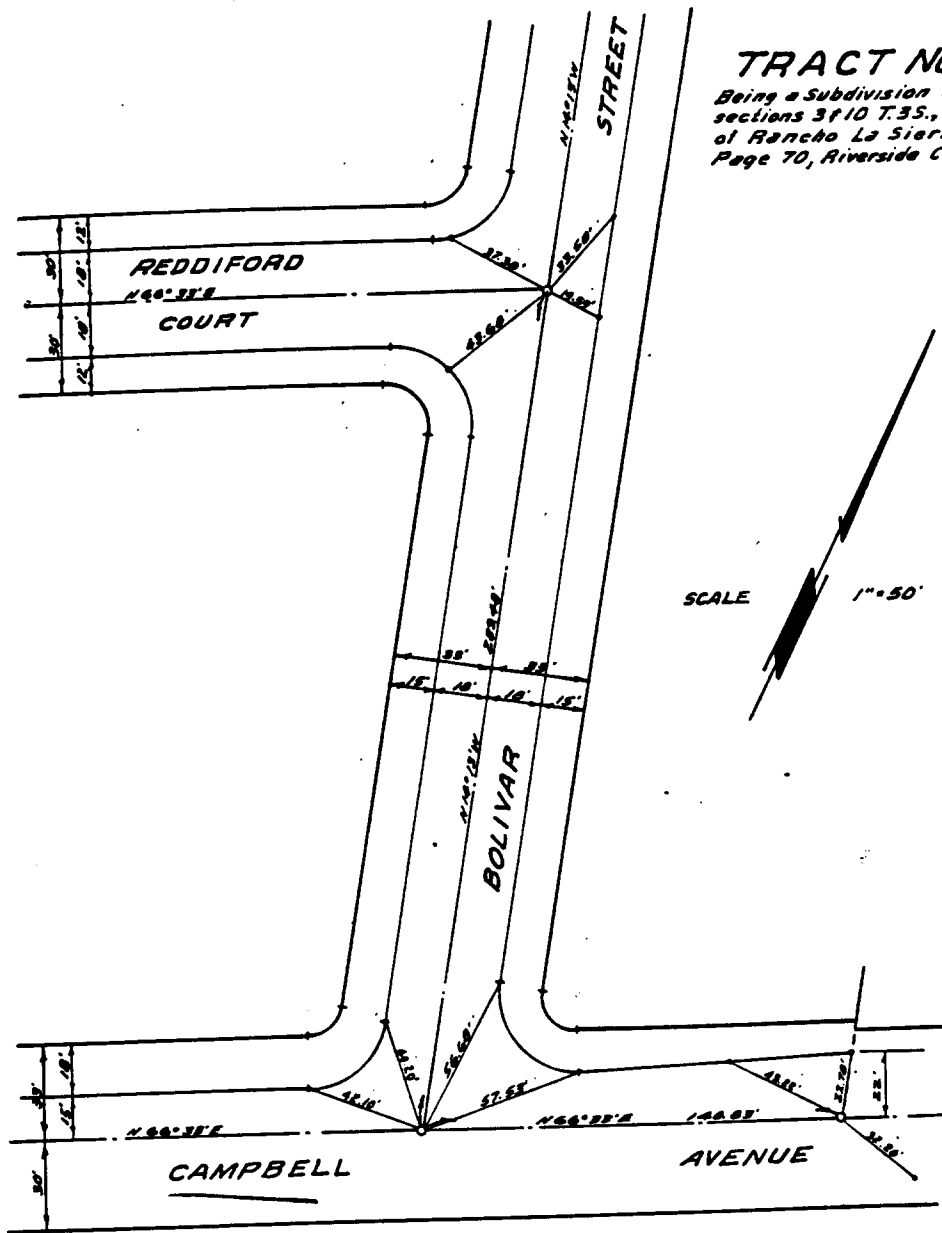


1734 .TIF

Street: CAMPBELL AVE

OFFICIAL USE ONLY

X-Street: BOLIVAR ST



TRACT NO. 3039
 Being a Subdivision of a portion of
 sections 3 & 10 T. 35., R. 6W., Per Map
 of Rancho La Sierra Map Book 6
 Page 70, Riverside County Records.

SCALE 1" = 50'

(C) R/W/11/12

Ties are to studs set in top of curb.
 Set 3/4" I.P. Tagged R.E. 9876 at all points
 shown thus o.

ALBERT A. WEBB ASSOCIATES
 F.B.
 W.O. 64-184
 Sheet 1 of 4

12

- ✕ FD. Ramset Nail on T/C
- FD. "C" Nail on T/C

- FD. LD. & TK. on T/C
- Set LD. & TK. on T/C

Scale:
 Date:
 Drawn by:
 W.O.:
 F.B.:

OFFICIAL TIE PLAT
CITY OF RIVERSIDE

*These ties are for the purpose of perpetuating the found
 monumentation. No claim is made as to the relationship of
 the points or lines shown hereon to true boundary locations.*

Sheet 1 of 1
 File No.:

2