

1750.TIF

Street: CANTERBURY

X-Street: MAGNOLIA AVE

OFFICIAL USE ONLY

1

Mon. Ties

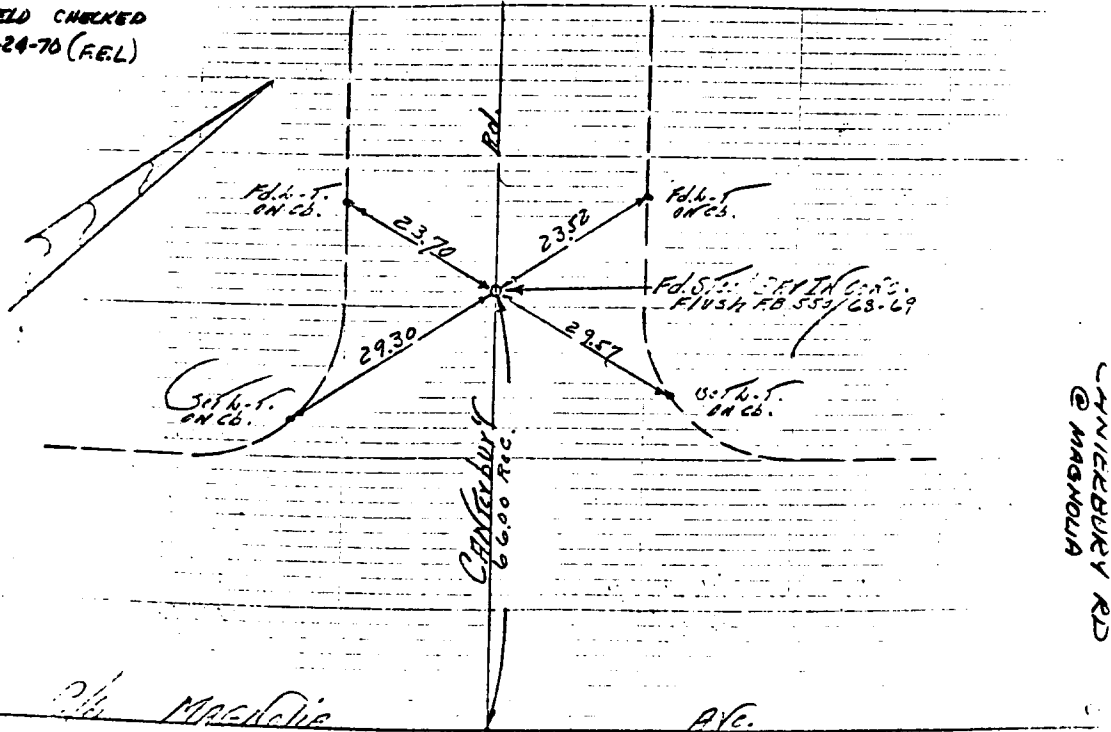
Canterbury Rd.
@ MAGNOLIA AVE.

TRANSIT TIES

HISTORICAL DATE
F.B. 550/68-69

Field PARTY
HOWY
GRANDINETTE
FVYC
F.B. 851/62
6-28-68

FIELD CHECKED
3-24-70 (FEL)



- ✕ FD. Ramset Nail on T/C
- FD. "C" Nail on T/C

- FD. LD. & TK. on T/C
- Set LD. & TK. on T/C

OFFICIAL TIE PLAT CITY OF RIVERSIDE

These ties are for the purpose of perpetuating the found monumentation. No claim is made as to the relationship of the points or lines shown hereon to true boundary locations.

Scale:
Date:
Drawn by:
W.O.:
F.B.:

Sheet 1 of 1
File No.: