

1787. TIF

Street: CANYON CREST DR.

X-Street: NAVAJO

OFFICIAL USE ONLY

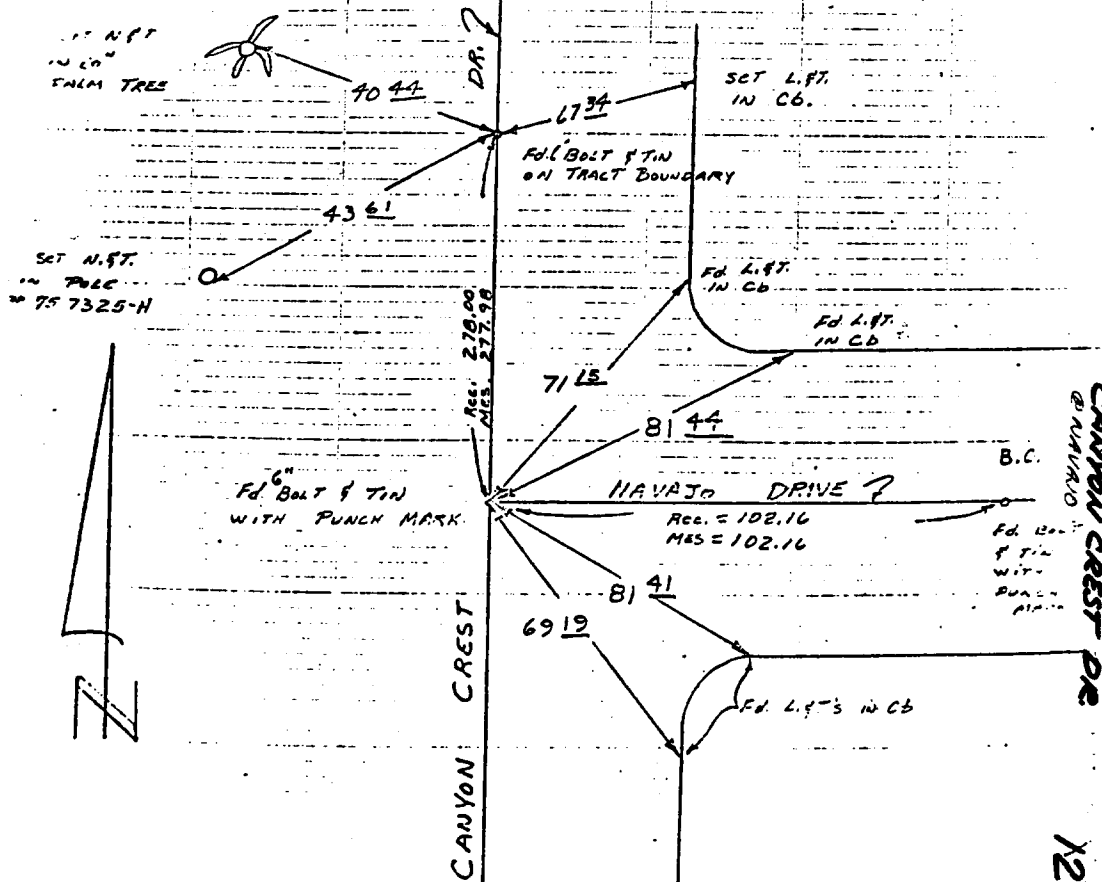
12

CANYON CREST
NAVAJO DRIVE

HISTORICAL DATA
TRACT # 2693
F.B. 11-56, 66

CREW
GRANDINETTE
FRYC
F.B. 851/44
6/20/68

SWING TIES



- ✕ FD. Ramset Nail on T/C
- FD. "C" Nail on T/C

- FD. LD. & TK. on T/C
- Set LD. & TK. on T/C

Scale: _____
 Date: _____
 Drawn by: _____
 W.O.: _____
 F.B.: _____

OFFICIAL TIE PLAT
CITY OF RIVERSIDE

These ties are for the purpose of perpetuating the found monumentation. No claim is made as to the relationship of the points or lines shown hereon to true boundary locations.

Sheet 1 of 1
 File No.: _____