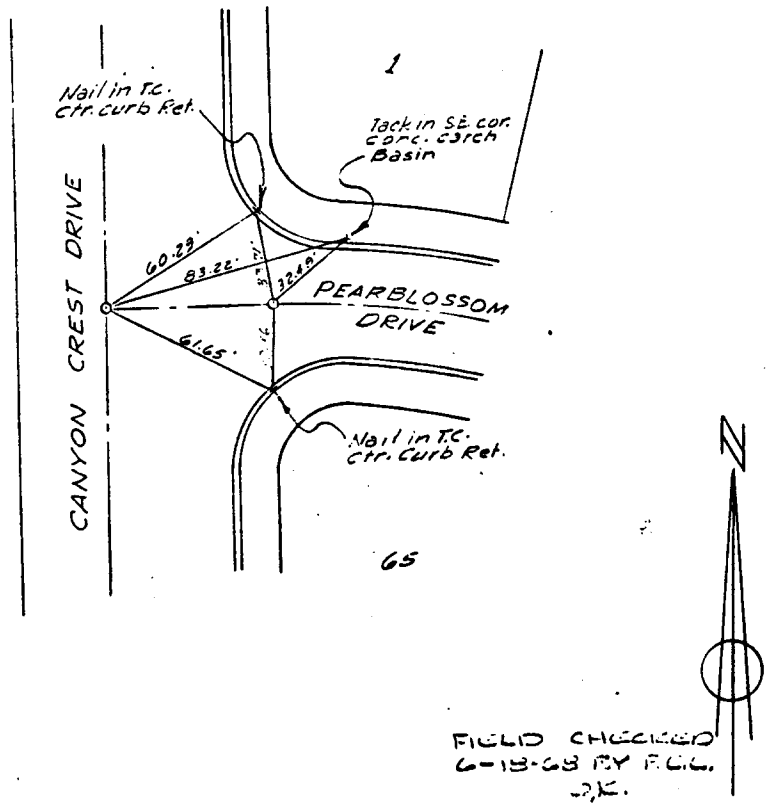


1789. TIE

Street: CANYON CREST

X-Street: PEAR BLOSSOM
OFFICIAL USE ONLY

13



FIELD CHECKED
6-18-68 BY R.C.L.
D.K.

SCALE 1"=50'	TIE SHEET TR. 3031	SHEET
DATE 5/15/67		4
DR. BY FH.	HUGH M. GALLAHER CIVIL ENGINEER RIVERSIDE CALIFORNIA	OF 11 SHEETS
W.O.		FILE NO.
F. B. 6-25		

- ✕ FD. Ramset Nail on T/C
- FD. LD. & TK. on T/C
- FD. "C" Nail on T/C
- Set LD. & TK. on T/C

OFFICIAL TIE PLAT

CITY OF RIVERSIDE

These ties are for the purpose of perpetuating the found monumentation. No claim is made as to the relationship of the points or lines shown hereon to true boundary locations.

Scale:
Date:
Drawn by:
W.O.:
F.B.:

Sheet 4 of 11
File No.: