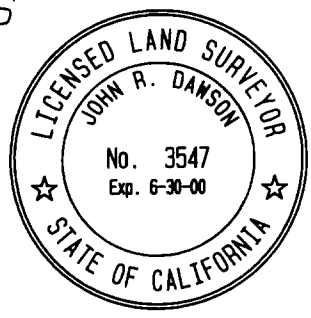
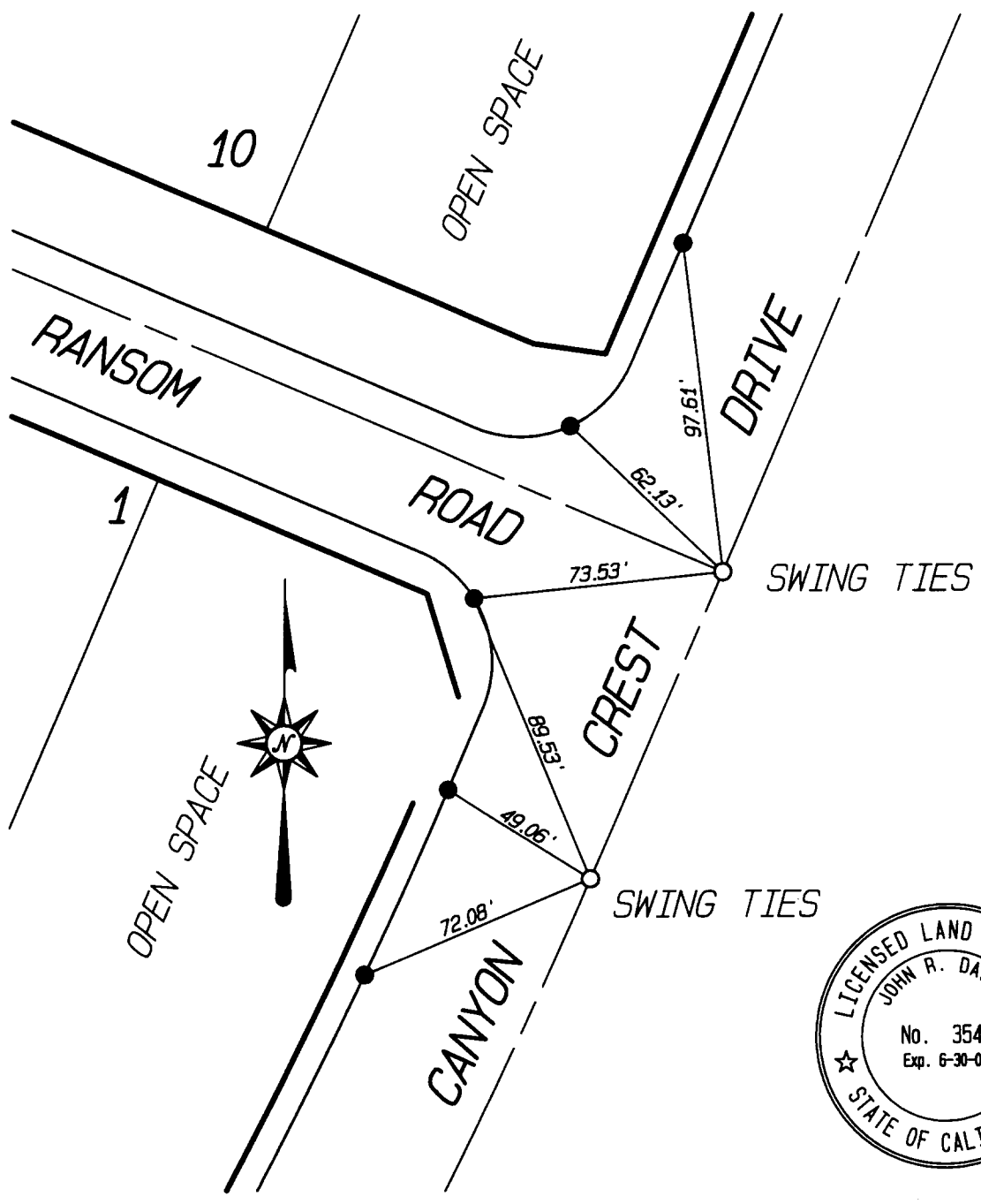


1912. 7IF

STREET CANYON CREST DRIVE X-STREET RANSOM ROAD OFFICE USE ONLY

- INDICATES SET 8" BOAT SPIKE AND L.S. 3547 TAG FLUSH UNLESS OTHERWISE NOTED
 - INDICATES SET NAIL IN TOP OF CURB
 - ⊙ INDICATES SET NAIL AND L.S. 3547 TAG IN CURB ON LOT LINE PROJECTED UNLESS OTHERWISE NOTED
- NOTE: ALL TIES ARE TRANSIT TIES UNLESS OTHERWISE NOTED



SCALE: 1" = 50'
 DATE: 1/5/2000
 DR. BY: SRD
 W.O.: 128.07/08
 F.B.: 1

OFFICIAL TIE PLAT
 CITY OF RIVERSIDE

PREPARED BY:
INTEGRA ENGINEERING, INC.
 LAND SURVEYORS * CIVIL ENGINEERS
 621 E. CARNEGIE DRIVE, #120, SAN BERNARDINO, CA. 92408
 TELEPHONE (909) 383-0200 FAX (909) 383-0203

SHEET 10
 OF 13 SHEETS
 FILE No.: 33