

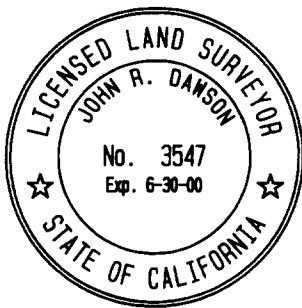
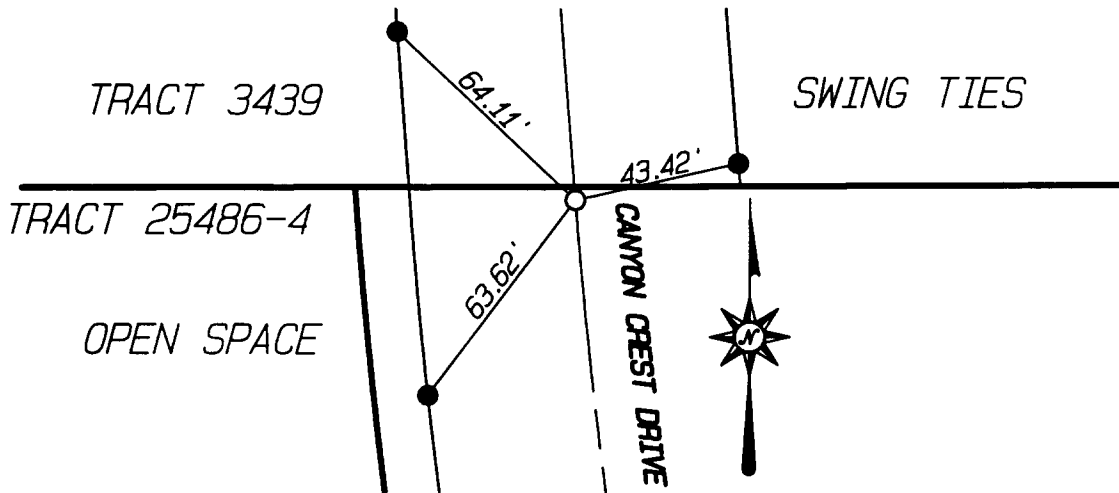
- INDICATES SET 8" BOAT SPIKE AND L.S. 3547 TAG FLUSH UNLESS OTHERWISE NOTED
 - INDICATES SET NAIL IN TOP OF CURB
 - ⊙ INDICATES SET NAIL AND L.S. 3547 TAG IN CURB ON LOT LINE PROJECTED UNLESS OTHERWISE NOTED
- NOTE: ALL TIES ARE TRANSIT TIES UNLESS OTHERWISE NOTED

N'LY TR. BDY

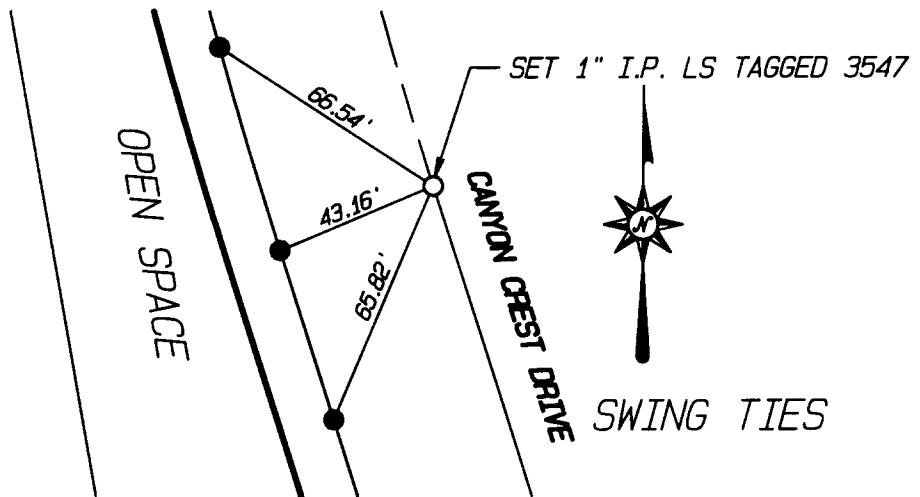
X-STREET OFFICE USE ONLY

CANYON CREST DRIVE

STREET



3



SCALE: 1" = 50'

DATE: 1/5/2000

DR. BY: SRD

W.O.: 128.07

F.B.: 1

OFFICIAL TIE PLAT
CITY OF RIVERSIDE

PREPARED BY:



INTEGRA ENGINEERING, INC.

LAND SURVEYORS * CIVIL ENGINEERS
621 E. CARNEGIE DRIVE, #120, SAN BERNARDINO, CA. 92408
TELEPHONE (909) 383-0200 FAX (909) 383-0203

SHEET 13

OF 13 SHEETS

FILE No.: 33A