

1815-71F

SOUTH OF RANSOM

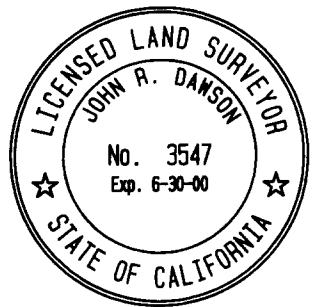
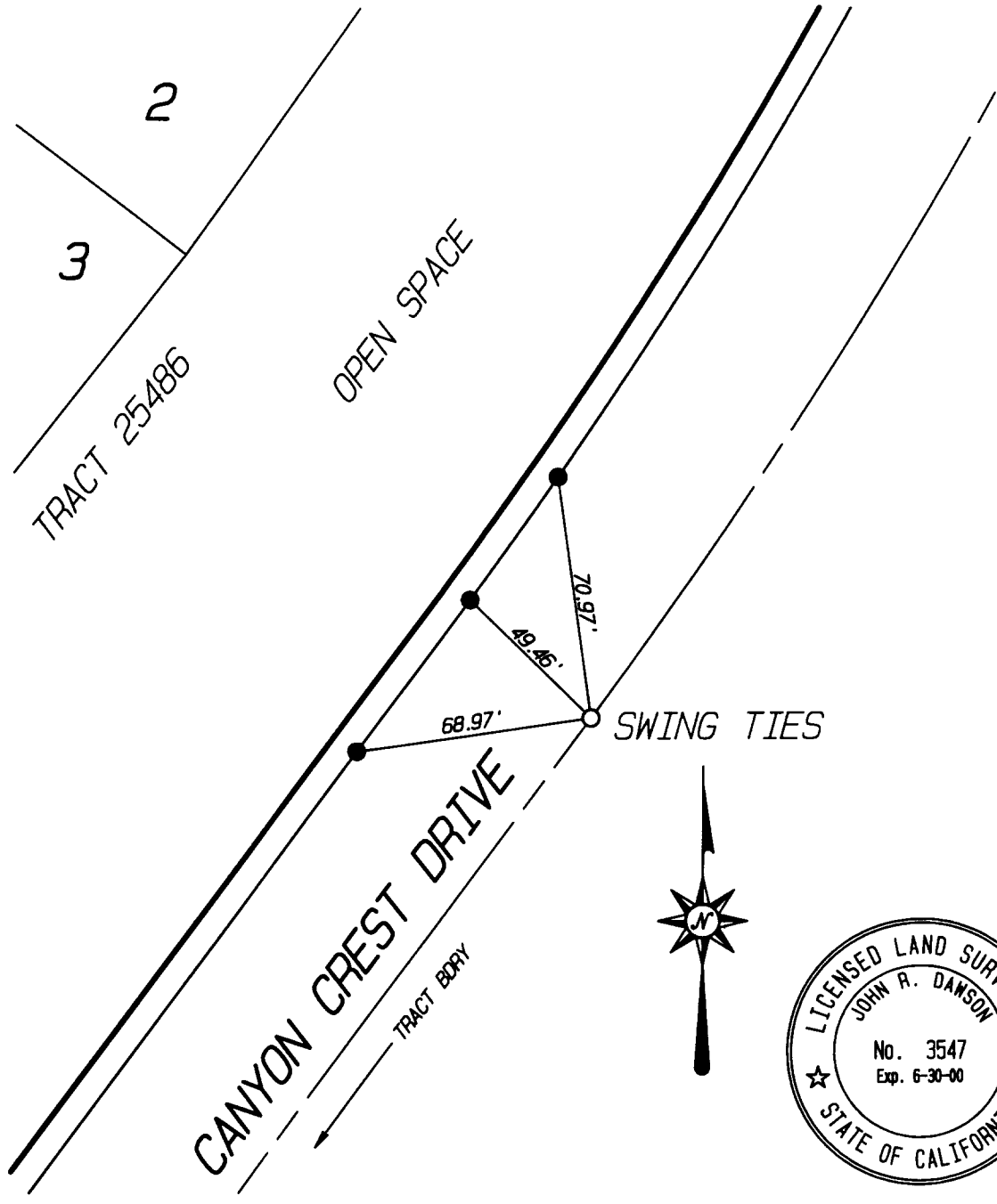
X-STREET  
OFFICE USE ONLY

CANYON CREST DRIVE

STREET


- INDICATES SET 8" BOAT SPIKE AND L.S. 3547 TAG FLUSH UNLESS OTHERWISE NOTED
- INDICATES SET NAIL IN TOP OF CURB
- ⊙ INDICATES SET NAIL AND L.S. 3547 TAG IN CURB ON LOT LINE PROJECTED UNLESS OTHERWISE NOTED

NOTE: ALL TIES ARE TRANSIT TIES UNLESS OTHERWISE NOTED



SCALE:	1" = 50'
DATE:	1/5/2000
DR. BY:	SRD
W.O.:	128.08
F.B.:	1

OFFICIAL TIE PLAT  
CITY OF RIVERSIDE

PREPARED BY:  

**INTEGRA ENGINEERING, INC.**  
 LAND SURVEYORS \* CIVIL ENGINEERS  
 621 E. CARNEGIE DRIVE, #120, SAN BERNARDINO, CA. 92408  
 TELEPHONE (909) 383-0200 FAX (909) 383-0203

SHEET 9

OF 13 SHEETS

FILE No.: 33c