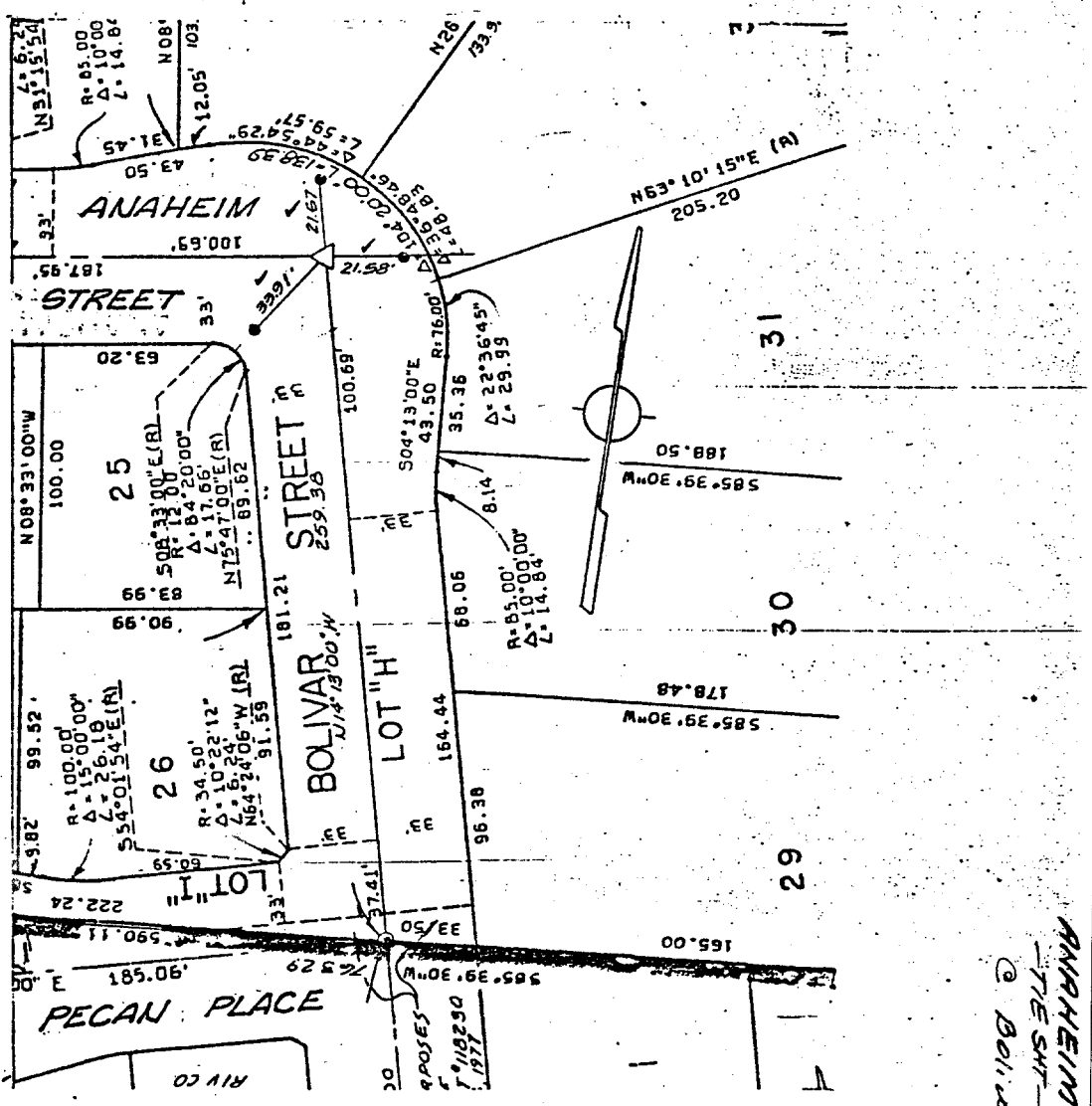


111.581



- △ Indicates (1/2" Brass Cap Stamped R.C.E. 862).
- Indicates Found Monument as noted
- ⊙ Indicates Set Nail & Tagged R.C.E. 862 in Curb.
- Indicates Set Nail in Curb.

FIELD CKD 23 OCT 78
E. GARCIA

J.F. DAVIDSON ASSOCIATES
3426 TENTH STREET
RIVERSIDE, CALIFORNIA

MONUMENT TIES
FOR TRACT 8665

SHEET NO. 6 OF 6
DATE MAY 1978
SCALE 1" = 60'

- ⊗ FD. Ramset Nail on T/C
- FD. LD. & TK. on T/C
- FD. "C" Nail on T/C
- Set LD. & TK. on T/C

Scale:
Date:
Drawn by:
W.O.:
F.B.:

OFFICIAL TIE PLAT
CITY OF RIVERSIDE
These ties are for the purpose of perpetuating the found monumentation. No claim is made as to the relationship of the points or lines shown hereon to true boundary locations.

Sheet 1 of 1
File No.:

Street: ANAHEIM ST
X-Street: BOLIVAR ST
OFFICIAL USE ONLY