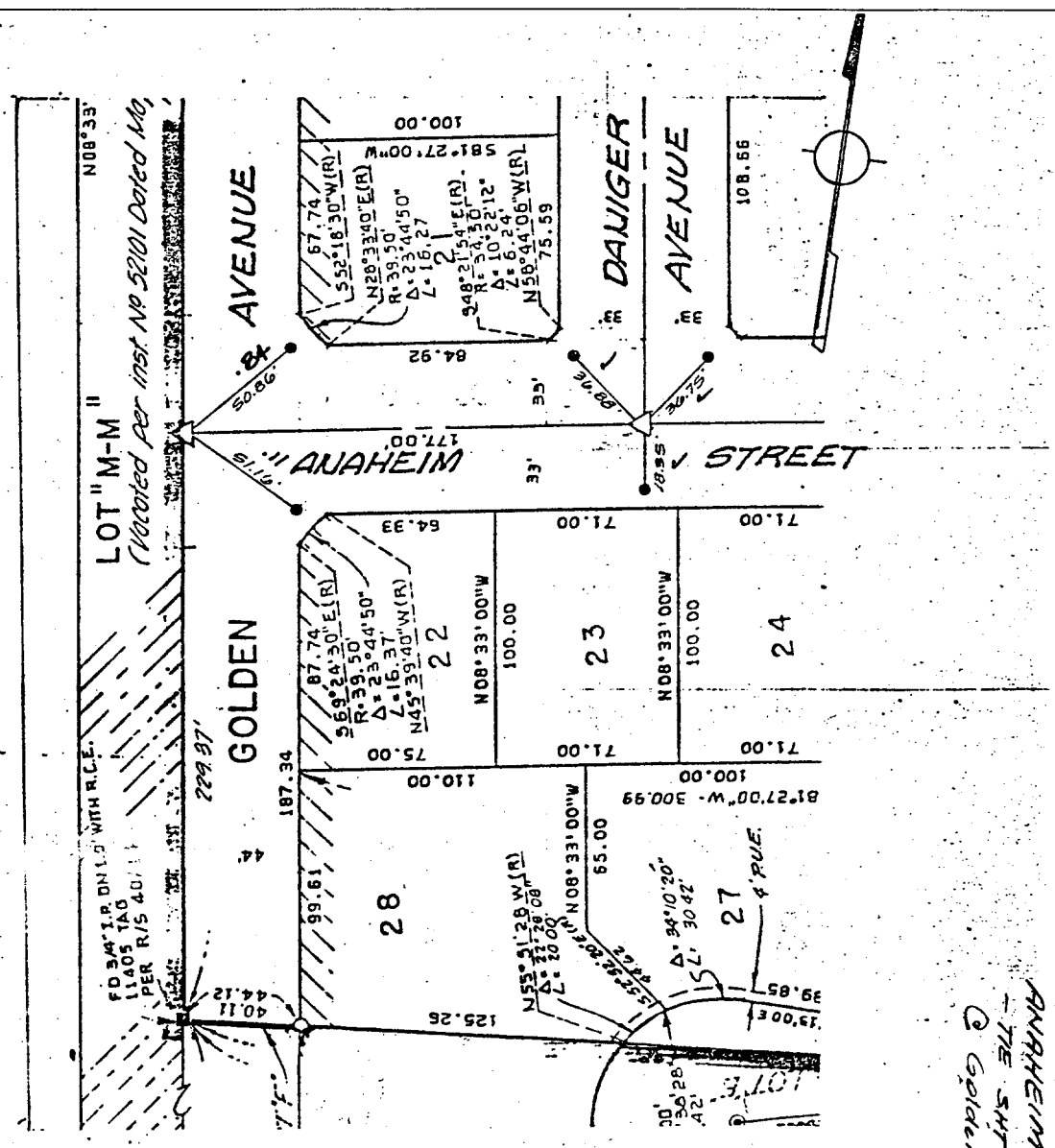


87.71F



- △ Indicates ..... (1/2" Brass Cap Stamped R.C.E. 862).
- Indicates ..... Found Monument as Noted
- ⊗ Indicates Set Nail & Tagged R.C.E. 862 In Curb.
- Indicates Set Nail In Curb.

FIELD CKD OCT 23, 1978  
E. GARCIA

ANAHEIM ST  
THE SHIP -  
Golden Ave

E. DAVIDSON ASSOCIATES  
3426 TENTH STREET  
RIVERSIDE CALIFORNIA

MONUMENT TIES  
FOR TRACT 8665

SHEET NO. 1 OF 6  
DATE MAY 1978  
SCALE 1" = 60'

- ⊗ FD. Ramset Nail on T/C
- FD. "C" Nail on T/C
- FD. LD. & TK. on T/C
- Set LD. & TK. on T/C

Scale:  
Date:  
Drawn by:  
W.O.:  
F.B.:

**OFFICIAL TIE PLAT**  
CITY OF RIVERSIDE

*These ties are for the purpose of perpetuating the found monumentation. No claim is made as to the relationship of the points or lines shown hereon to true boundary locations.*

Sheet 1 of 1  
File No.:

Street: ANAHEIM ST  
X-Street: GOLDEN AVE  
OFFICIAL USE ONLY