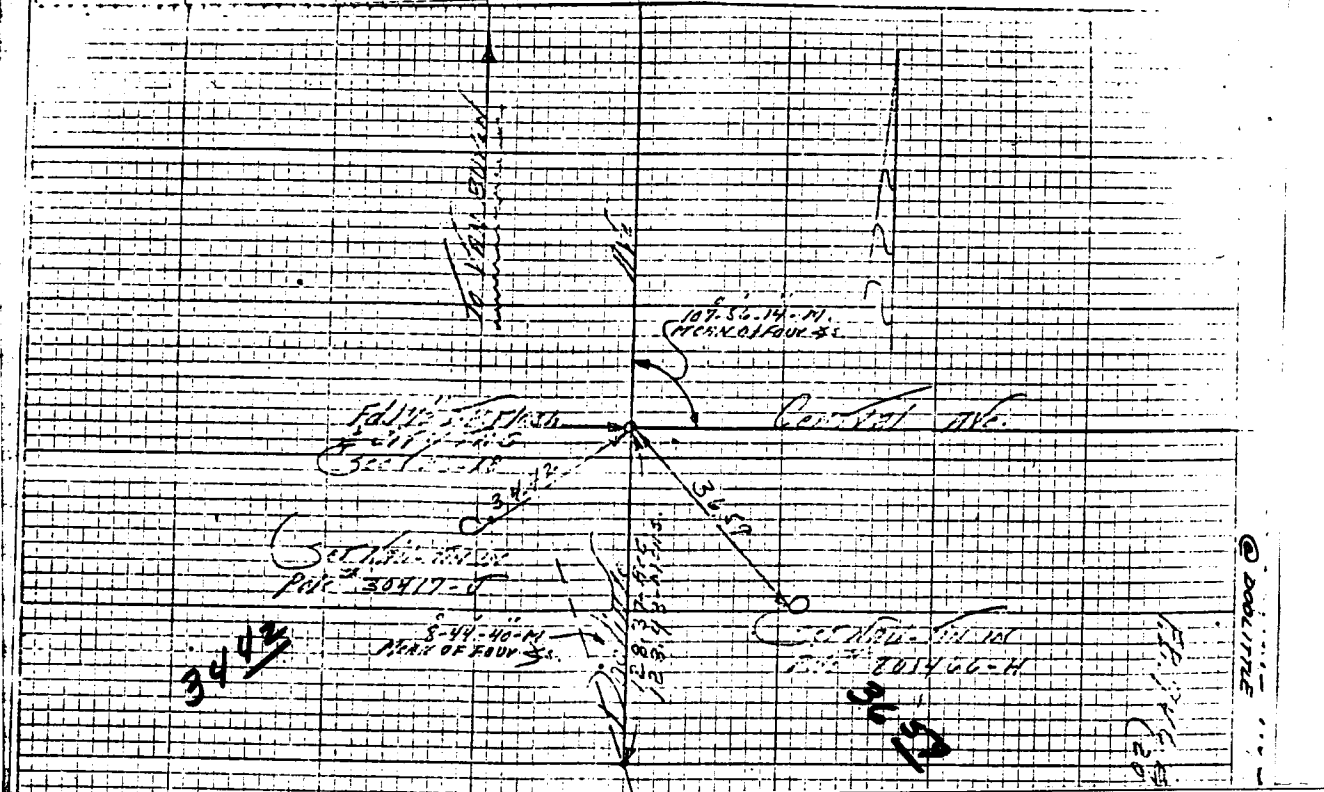


*Historical Data*  
 SEC. 118-47-11  
 F.B. 946/14  
 R/S-48/61  
 F.B. 946/18

*Field Data*  
 MONY  
 THER  
 6-2-70  
 T.P. 118-119  
 F.B. 946/19



- × FD. Ramset Nail on T/C
- FD. LD. & TK. on T/C
- FD. "C" Nail on T/C
- Set LD. & TK. on T/C

Scale: \_\_\_\_\_  
 Date: \_\_\_\_\_  
 Drawn by: \_\_\_\_\_  
 W.O.: \_\_\_\_\_  
 F.B.: \_\_\_\_\_

**OFFICIAL TIE PLAT**  
**CITY OF RIVERSIDE**

*These ties are for the purpose of perpetuating the found monumentation. No claim is made as to the relationship of the points or lines shown hereon to true boundary locations.*

Sheet 1 of 1  
 File No.: \_\_\_\_\_