

1965.71F

Street: CHICAGO AVE

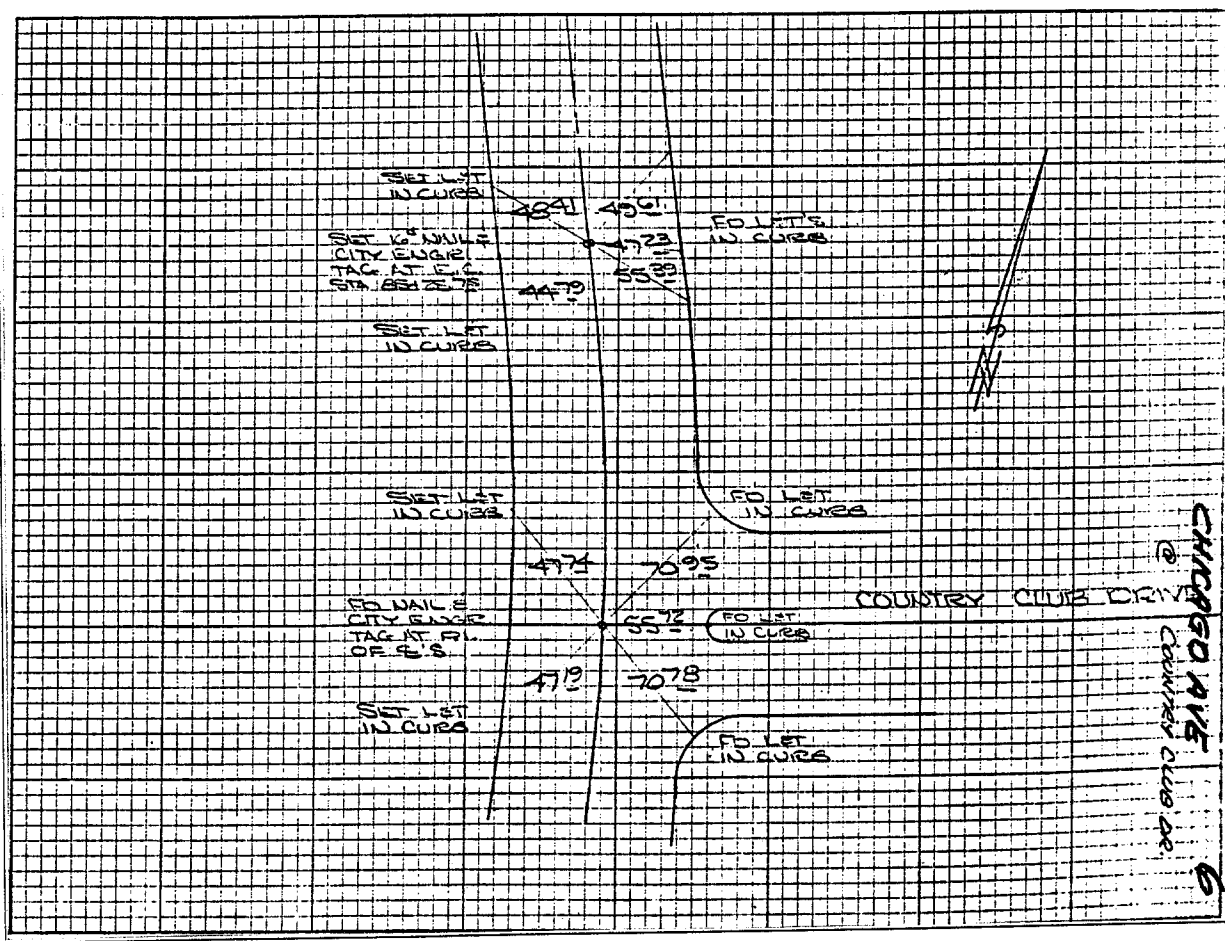
X-Street: COUNTRY CLUB DR.

OFFICIAL USE ONLY

6

CHICAGO AVENUE
AT COUNTRY CLUB

HISTORICAL DATA	TRANSIT TIES	CREW:
FB 24/12/34		STEEL
FB 27/11/31		FRUC
FB 28/30		NEW
FB 32/1/32		WEST 10, '31
		FB 35/7/32



- ✕ FD. Ramset Nail on T/C
- FD. LD. & TK. on T/C
- FD. "C" Nail on T/C
- Set LD. & TK. on T/C

OFFICIAL TIE PLAT

CITY OF RIVERSIDE

These ties are for the purpose of perpetuating the found monumentation. No claim is made as to the relationship of the points or lines shown hereon to true boundary locations.

Scale: _____

Date: _____

Drawn by: _____

W.O.: _____

F.B.: _____

Sheet 1 of 1
File No.: _____