

1998.71F

Street: CLEVELAND
X-Street: GRATTON & MONROE

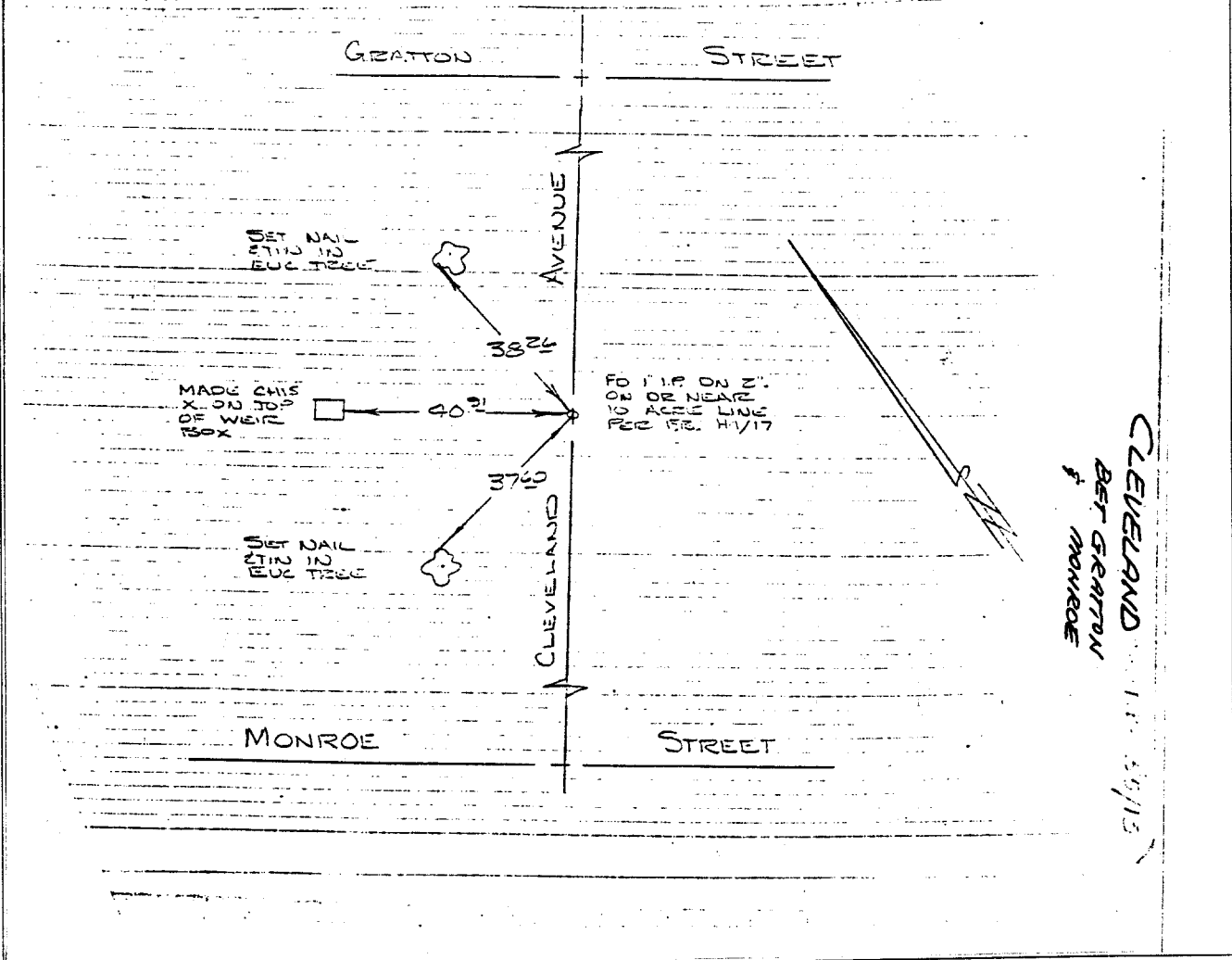
OFFICIAL USE ONLY

CLEVELAND AVENUE
BET MONROE & GRATTON

HISTORICAL DATA
F.B. V/37
F.B. H/17

SWING TIES

CREW
STEELE
MORGAN
JORDAN
9-12-68
F.B. BSS/13.



CLEVELAND AVENUE
BET GRATTON & MONROE

- ✕ FD. Ramset Nail on T/C
- FD. LD. & TK. on T/C
- FD. "C" Nail on T/C
- Set LD. & TK. on T/C

Scale:
Date:
Drawn by:
W.O.:
F.B.:

OFFICIAL TIE PLAT
CITY OF RIVERSIDE

These ties are for the purpose of perpetuating the found monumentation. No claim is made as to the relationship of the points or lines shown hereon to true boundary locations.

Sheet 1 of 1
File No.: