

2005. T15

Street: CLEVELAND AVE

OFFICIAL USE ONLY

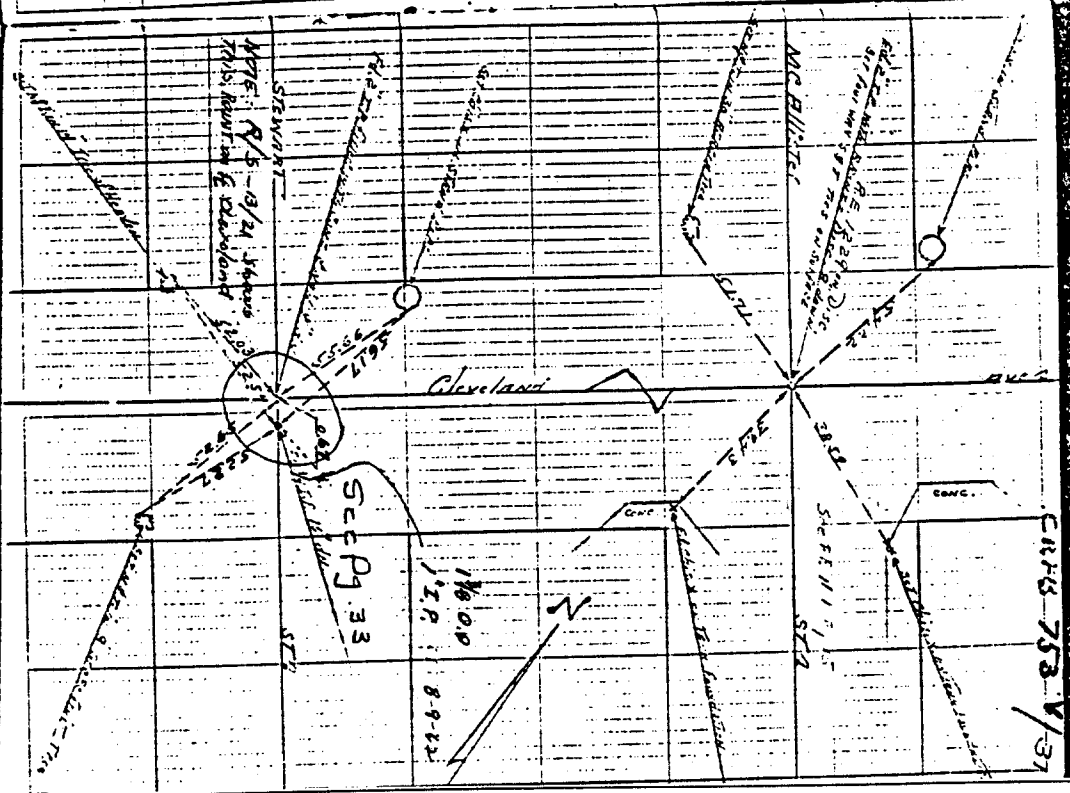
X-Street: STEWART ST.

See R/S 13/21 - File No 5123)
 Old 2x2 Fd. reset with Bronze disc
 in 2" TP set in conc. Show
 RE #1229: Gilbert Webb

Note. 1" TP set by E.W.T Apr. 15th 1925
 per J.F. Davidson Survey F8227
 pg. 26 Shaw
 See R/S J.F.D. F.B. 230 pg. 14, 348 pg. 15
 F8287 pg. 46 Shaw

SPICE SAT per City Council 1957 19

CLEVELAND AVE
 @ Stewart St



- ✕ FD. Ramset Nail on T/C
- FD. LD. & TK. on T/C
- FD. "C" Nail on T/C
- Set LD. & TK. on T/C

Scale:
 Date:
 Drawn by:
 W.O.:
 F.B.:

OFFICIAL TIE PLAT CITY OF RIVERSIDE

These ties are for the purpose of perpetuating the found monumentation. No claim is made as to the relationship of the points or lines shown hereon to true boundary locations.

Sheet 1 of 1
 File No.: