

2062. 71F

Street: COLUMBIA

OFFICIAL USE ONLY

X-Street:

RIVERA ST & SALMON RIVER RD

SURVEY OF CENTERLINE TIES INDEX JN. 2653 PAGE 1 OF 3  
 SURVEYED BY J. BOULAN, S. ADKINS DATE JUNE 20, 1990 ORANGE COUNTY SURVEYOR

Fd. 1" I.P. w/Plastic  
 cap, RCE 12437

Set 1" I.P. w/Plastic  
 cap, RCE 12437

Set Lead & Tack  
 in top of curb

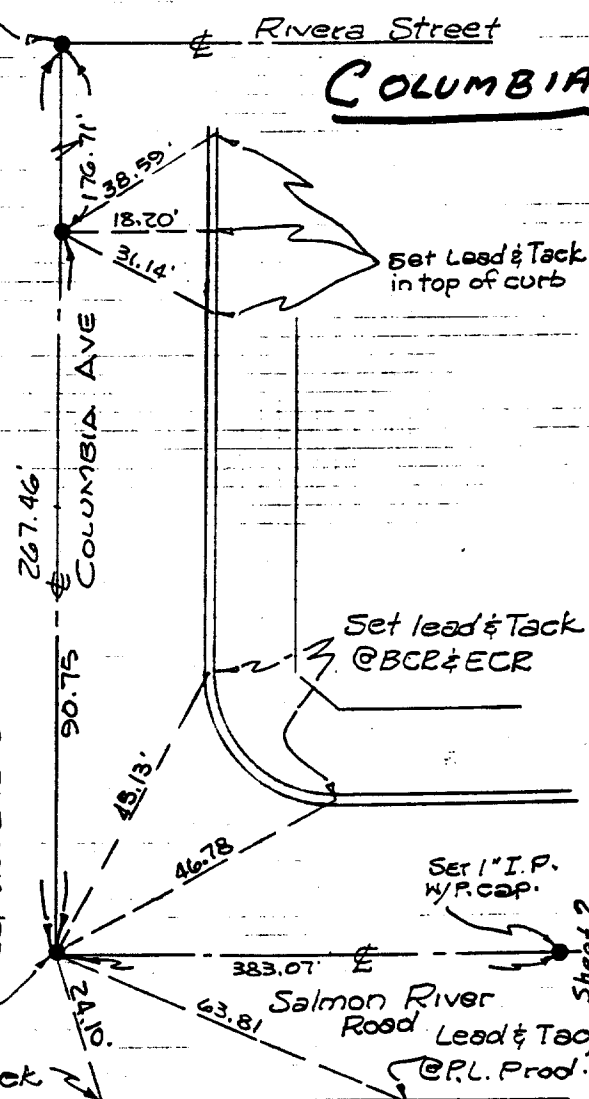
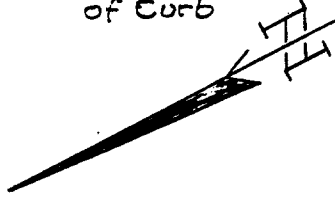
COLUMBIA

Set lead & Tack  
 @ BCR & ECR

Set 1" I.P.  
 w/P. cap.

Set Lead & Tag  
 @ P.L. Prod.

Set lead & Tack  
 ± 12' From End  
 of Curb



- ✕ FD. Ramset Nail on T/C
- FD. "C" Nail on T/C

- FD. LD. & TK. on T/C
- Set LD. & TK. on T/C

**OFFICIAL TIE PLAT**  
**CITY OF RIVERSIDE**

*These ties are for the purpose of perpetuating the found monumentation. No claim is made as to the relationship of the points or lines shown hereon to true boundary locations.*

Scale:  
 Date:  
 Drawn by:  
 W.O.:  
 F.B.:

Sheet 1 of 1  
 File No.: