

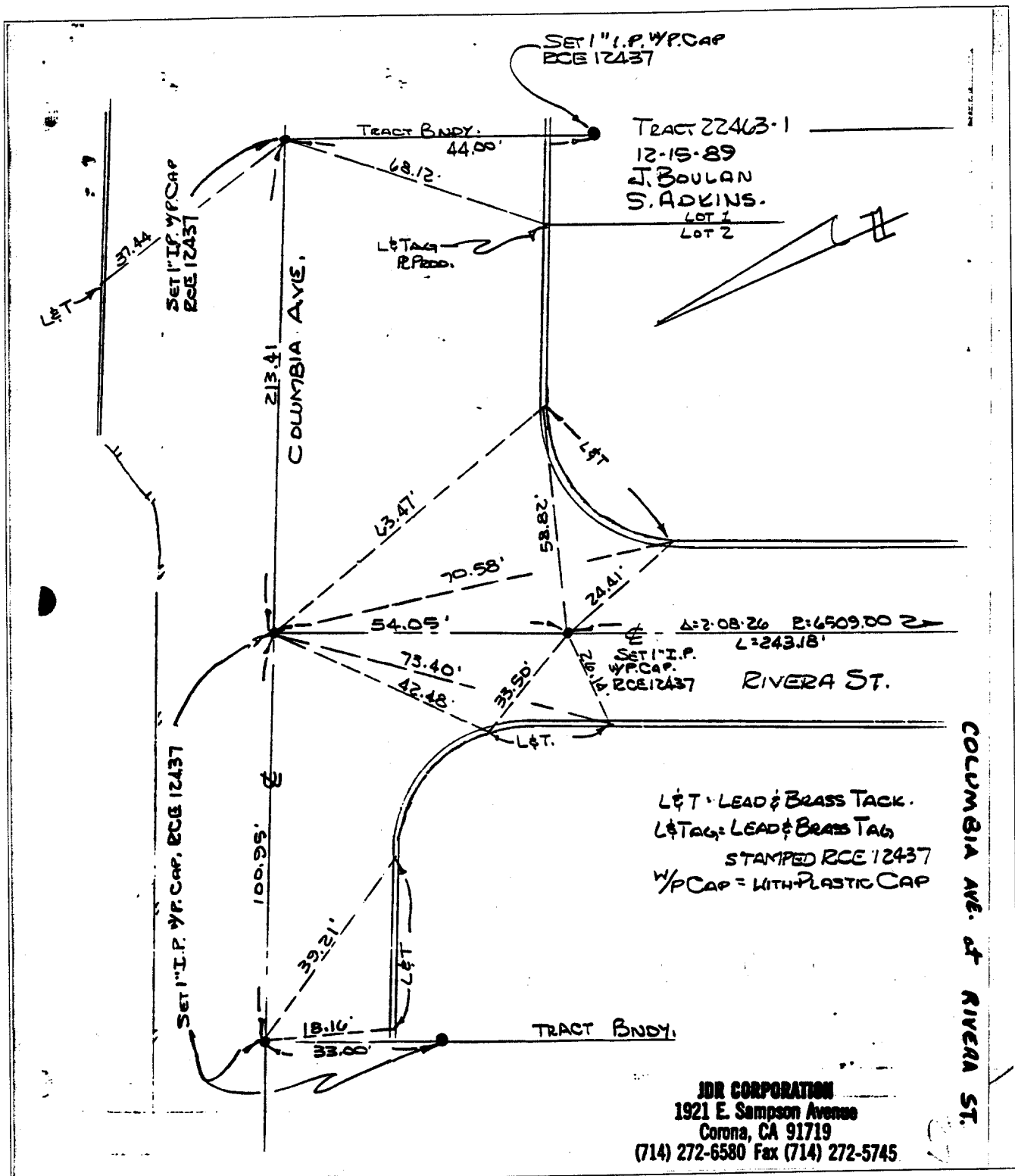
2072 . TIF

Street: COLUMBIA AVE

OFFICIAL USE ONLY

X-Street: RIVERA ST.

27



L&T = LEAD & BRASS TACK.
 L&TAG = LEAD & BRASS TAG
 STAMPED RCE 12437
 W/P CAP = WITH PLASTIC CAP

JDR CORPORATION
 1921 E. Sampson Avenue
 Corona, CA 91719
 (714) 272-6580 Fax (714) 272-5745

- ✕ FD. Ramset Nail on T/C
- FD. LD. & TK. on T/C
- FD. "C" Nail on T/C
- Set LD. & TK. on T/C

Scale:
 Date:
 Drawn by:
 W.O.:
 F.B.:

OFFICIAL TIE PLAT
CITY OF RIVERSIDE

These ties are for the purpose of perpetuating the found monumentation. No claim is made as to the relationship of the points or lines shown hereon to true boundary locations.

Sheet 1 of 1
 File No.: