

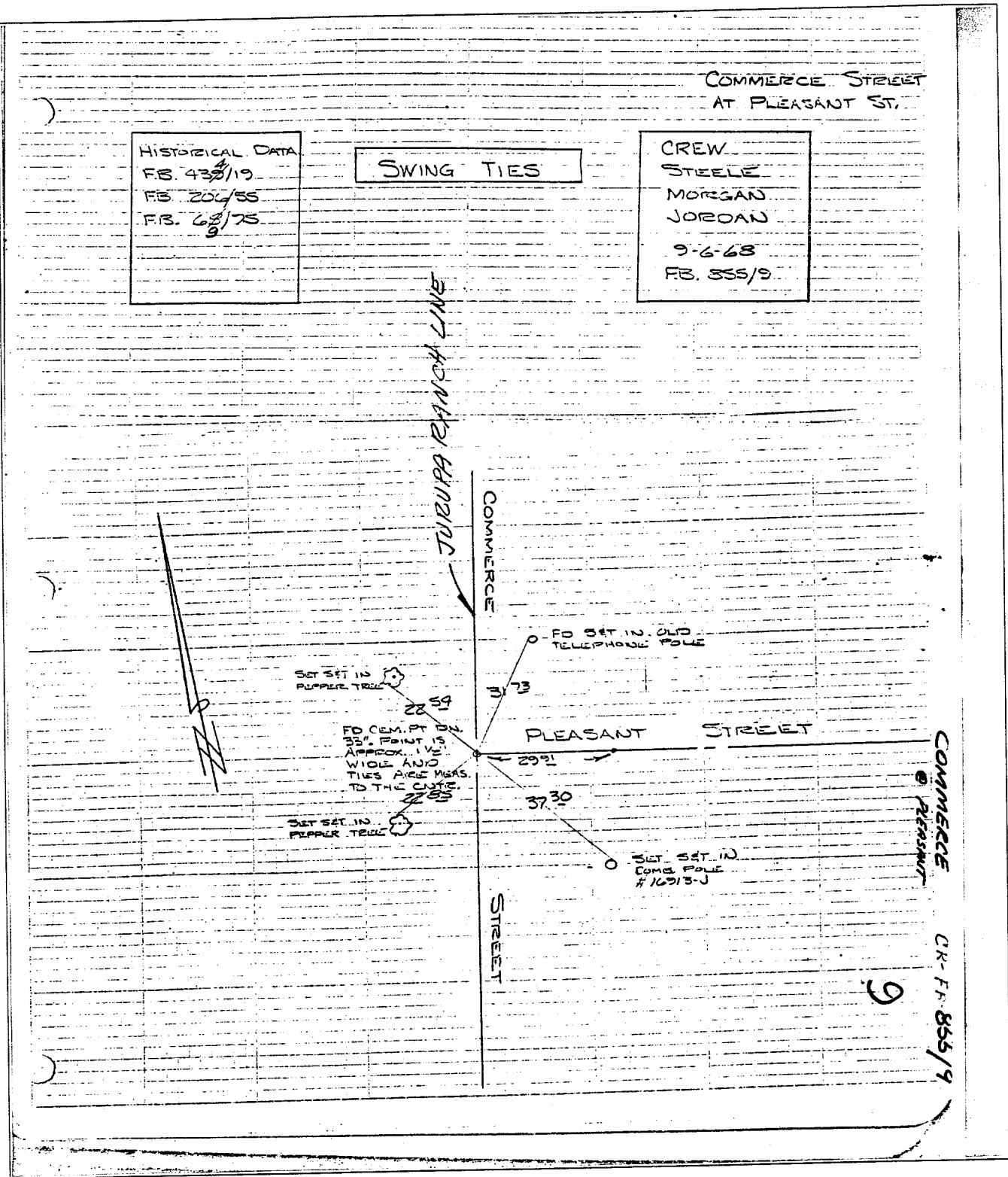
Street: COMMERCE X-Street: PLEASANT
 OFFICIAL USE ONLY

COMMERCE STREET
 AT PLEASANT ST.

HISTORICAL DATA
 FB. 438/19
 FB. 204/55
 FB. 68/75

SWING TIES

CREW
 STEELE
 MORGAN
 JORDAN
 9-6-68
 FB. 355/9



- ✕ FD. Ramset Nail on T/C
- FD. LD. & TK. on T/C
- FD. "C" Nail on T/C
- Set LD. & TK. on T/C

Scale:
 Date:
 Drawn by:
 W.O.:
 F.B.:

OFFICIAL TIE PLAT
 CITY OF RIVERSIDE

These ties are for the purpose of perpetuating the found monumentation. No claim is made as to the relationship of the points or lines shown hereon to true boundary locations.

Sheet 1 of 1
 File No.: