

SURVEYED BY GARCIA-FAND-BELDEN

DATE JULY 17, 1985

211.71F

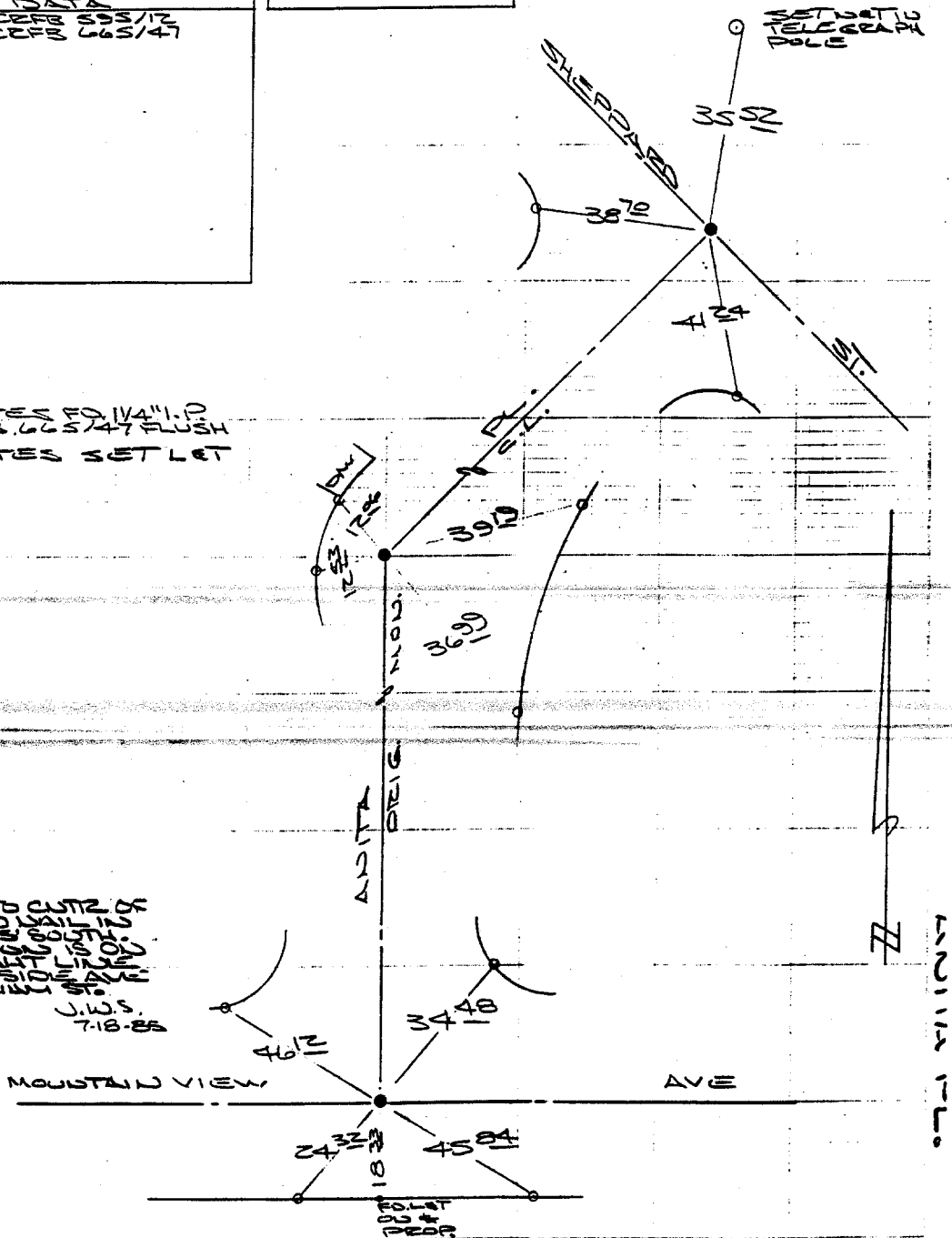
HISTORICAL DATA	
CREATED	8/95/12
CCFB	6/65/47

TRANSIT TIES

- INDICATES FD 1/4" I.D. PERM. TO 66 5/47 FLUSH
- INDICATES SET LET

SERVCO NO. 7036

NOTE:
 THIS PLAT IS A RECONSTRUCTION OF AN OLD PLAT AND SHOULD BE USED AS A GUIDE ONLY. THE ORIGINAL PLAT IS ON FILE IN THE OFFICE OF THE COUNTY CLERK, RIVERSIDE, CALIFORNIA.



- × FD. Ramset Nail on T/C
- FD. LD. & TK. on T/C
- FD. "C" Nail on T/C
- Set LD. & TK. on T/C

Street: ANITA PL.

X-Street: OFFICIAL USE ONLY

Mountain View Ave

Scale:
 Date:
 Drawn by:
 W.O.:
 F.B.:

OFFICIAL TIE PLAT
CITY OF RIVERSIDE

These ties are for the purpose of perpetuating the found monumentation. No claim is made as to the relationship of the points or lines shown hereon to true boundary locations.

Sheet 1 of 1
 File No.: