

2139. TIF

HISTORICAL DATA

MB 94/29-34

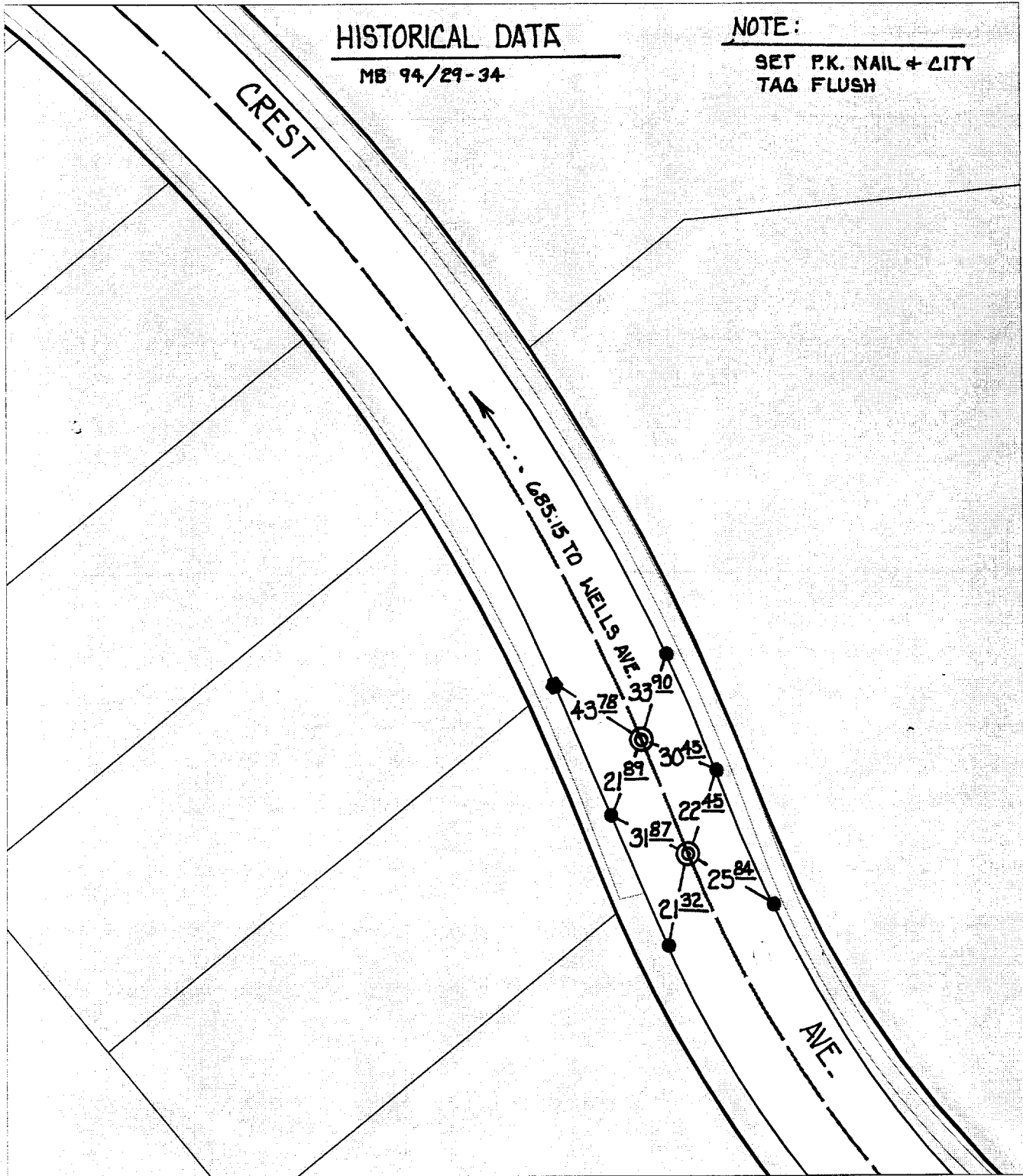
NOTE:

SET P.K. NAIL + CITY
TAG FLUSH

Street:

CREST AVE.

X-Street: SELLY. OF WELLS AVE.
OFFICIAL USE ONLY



- ✕ FD. Ramset Nail on T/C
- FD. "C" Nail on T/C

- FD. LD. & TK. on T/C
- Set LD. & TK. on T/C

Scale: 1" = 50'

Date: 09/03/99

Drawn by: L. Harris

W.O.:

F.B.:

OFFICIAL TIE PLAT
CITY OF RIVERSIDE

*These ties are for the purpose of perpetuating the found
monumentation. No claim is made as to the relationship of
the points or lines shown hereon to true boundary locations.*



Sheet 2 of 3

File No.:

35