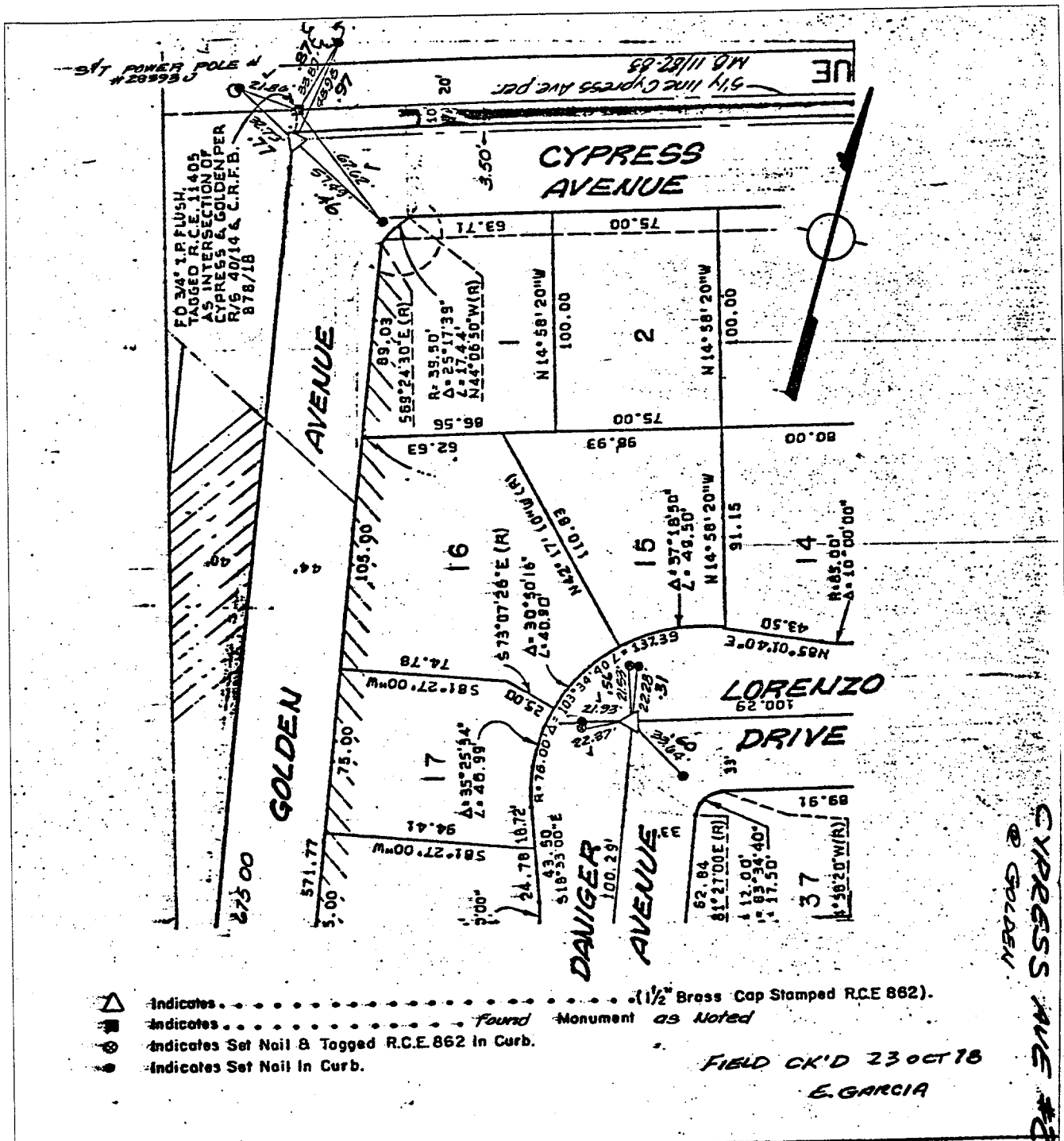


2172.TIF

Street: CYPRESS AVE
 X-Street: GOLDEN

OFFICIAL USE ONLY



DAVIDSON ASSOCIATES
 426 TENTH STREET
 VERSIDE, CALIFORNIA

MONUMENT TIES
 FOR TRACT 8665

SHEET NO. 2 OF 6
 DATE MAY 1978
 SCALE 1" = 50'

CYPRESS AVE #28
 @ GOLDEN

- ✕ FD. Ramset Nail on T/C
- FD. "C" Nail on T/C
- FD. LD. & TK. on T/C
- Set LD. & TK. on T/C

Scale:
 Date:
 Drawn by:
 W.O.:
 F.B.:

OFFICIAL TIE PLAT
 CITY OF RIVERSIDE

These ties are for the purpose of perpetuating the found monumentation. No claim is made as to the relationship of the points or lines shown hereon to true boundary locations.

Sheet 1 of 1
 File No.: