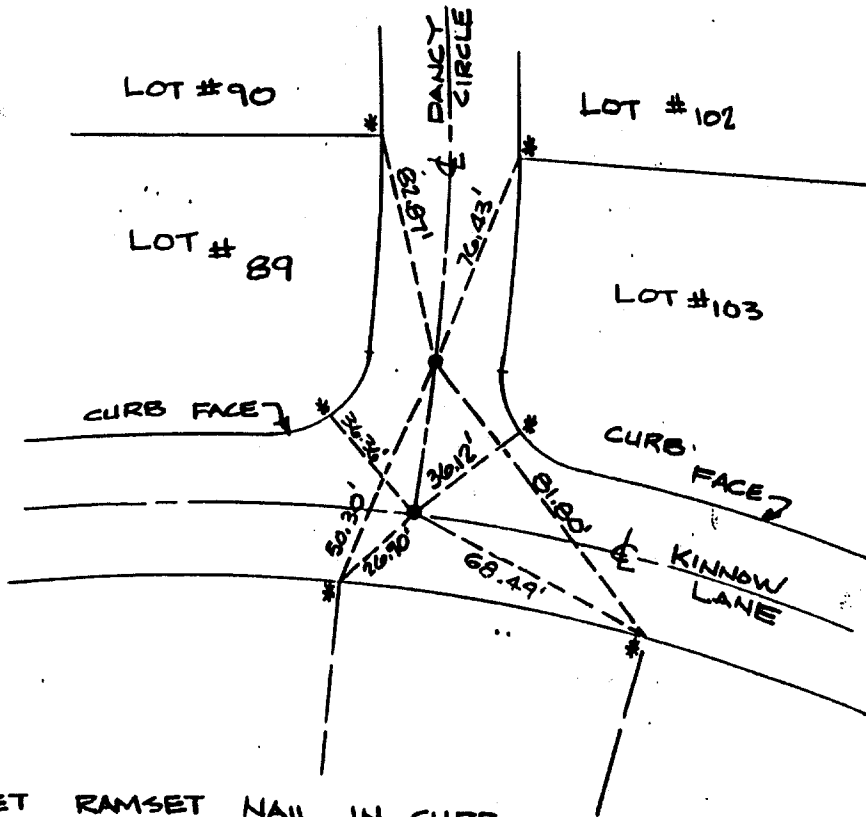


2184. TIF

Sheet 10 of 13

NOTE :
ALL TIES ARE SWING TIES.



- * SET RAMSET NAIL IN CURB
- SET 1" IRON PIPE, TAGGED LS 5306



Street: DANCY CIRCLE

X-Street: KINNOW LN.

OFFICIAL USE ONLY

DANCY CIRCLE @
KINNOW LN. &
RIVERSIDE, CA

TRACT NO. 19958-1
CENTERLINE TIES

Scale: N.T.S. Date: OCT. 1988

SOUTHLAND ENGINEERING

2501 RUBIDOUX BLVD. SUITE B
RIVERSIDE, CALIFORNIA, 92509
PH. (714) 788-8488

- ✗ FD. Ramset Nail on T/C
- FD. "C" Nail on T/C

- FD. LD. & TK. on T/C
- Set LD. & TK. on T/C

Scale:
Date:
Drawn by:
W.O.:
F.B.:

OFFICIAL TIE PLAT
CITY OF RIVERSIDE

These ties are for the purpose of perpetuating the found monumentation. No claim is made as to the relationship of the points or lines shown hereon to true boundary locations.

Sheet 1 of 1
File No.: