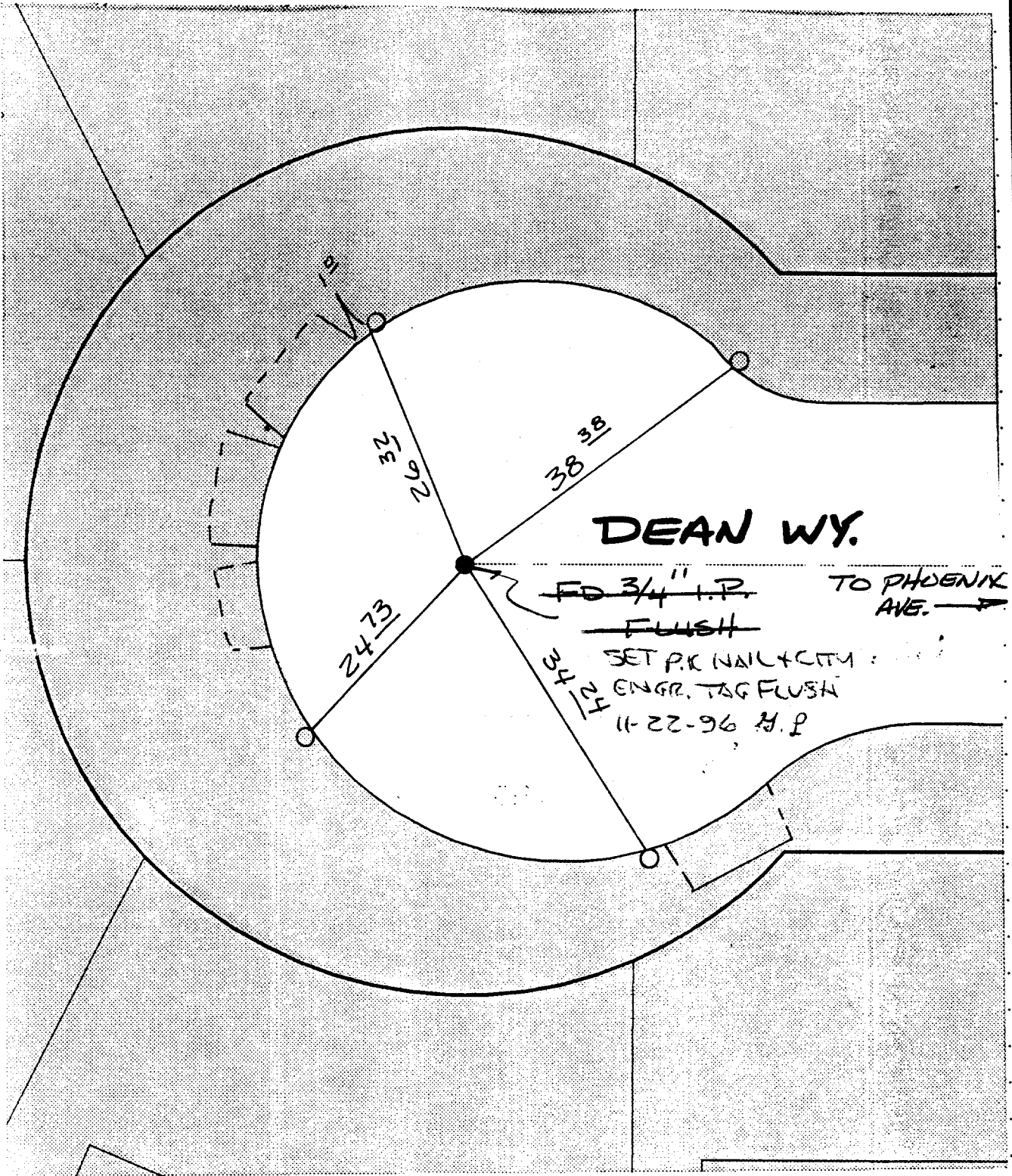


2218-TIF

STREET DEAN WY. X-STREET CUL-DE-SAC (W'Y)

OFFICE USE ONLY



X FD. Ramset Nail on T/C
 ■ FD. "C" Nail on T/C

● FD. LD. & TK. on T/C
 ○ SET LD. & TK. On T/C

SCALE: N/A.

DATE: 7/12/12

DR. BY: CMS

W.O.:

F.B.:

OFFICIAL TIE PLAT
CITY OF RIVERSIDE

These ties are for the purpose of perpetuating the found monumentation. No claim is made as to the relationship of the points or lines shown hereon to true boundary locations.

SHEET

OF SHEETS
FILE NO.: