

2220. TIF

Street: DE ANZA AVE

X-Street: MERRILL AVE

OFFICIAL USE ONLY

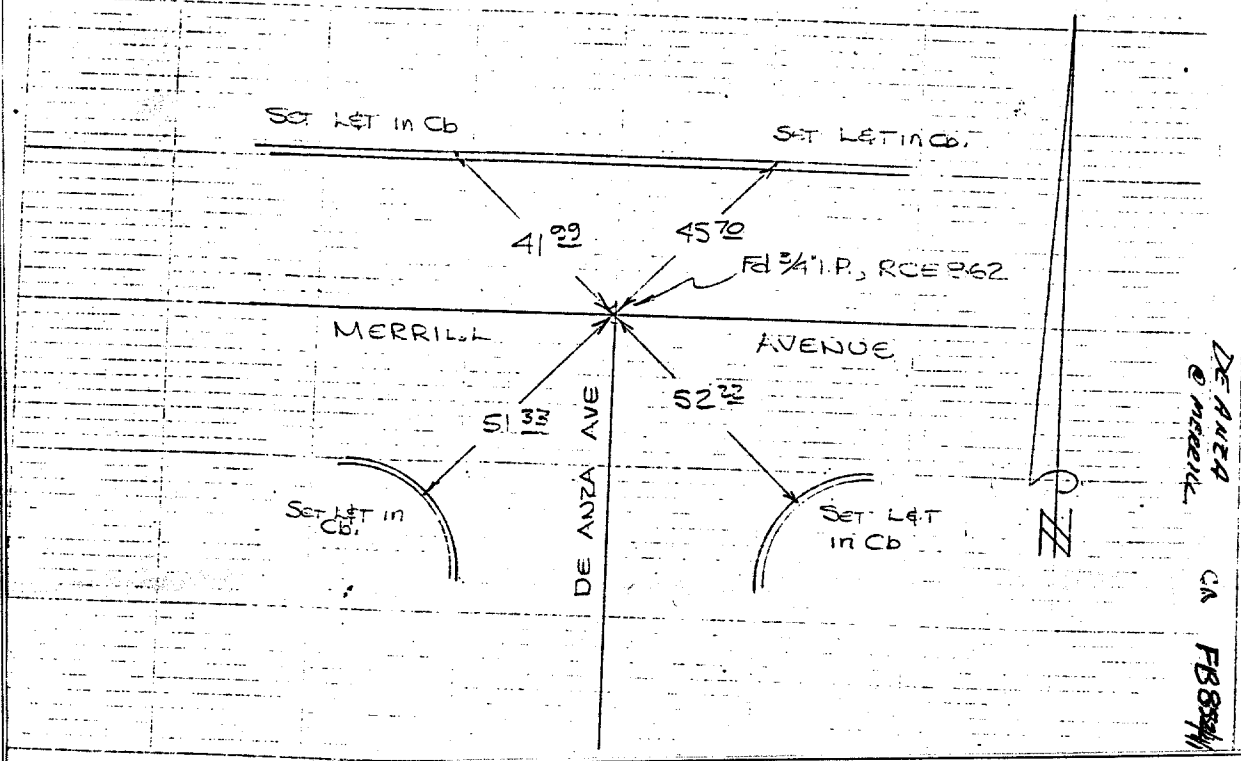
DE ANZA AVE
AT
MERRILL AVE

TRANSIT TIES

HISTORICAL DATA

CREW
HUTCHINSON
THORP
RUSSELL

DATE
SEPT 4, 1968



DE ANZA
@ MERRILL
CA
FB 852/41

CR FB 852/41

✕ FD. Ramset Nail on T/C
■ FD. "C" Nail on T/C

● FD. LD. & TK. on T/C
○ Set LD. & TK. on T/C

OFFICIAL TIE PLAT

CITY OF RIVERSIDE

These ties are for the purpose of perpetuating the found monumentation. No claim is made as to the relationship of the points or lines shown hereon to true boundary locations.

Scale:
Date:
Drawn by:
W.O.:
F.B.:

Sheet 1 of 1
File No.: