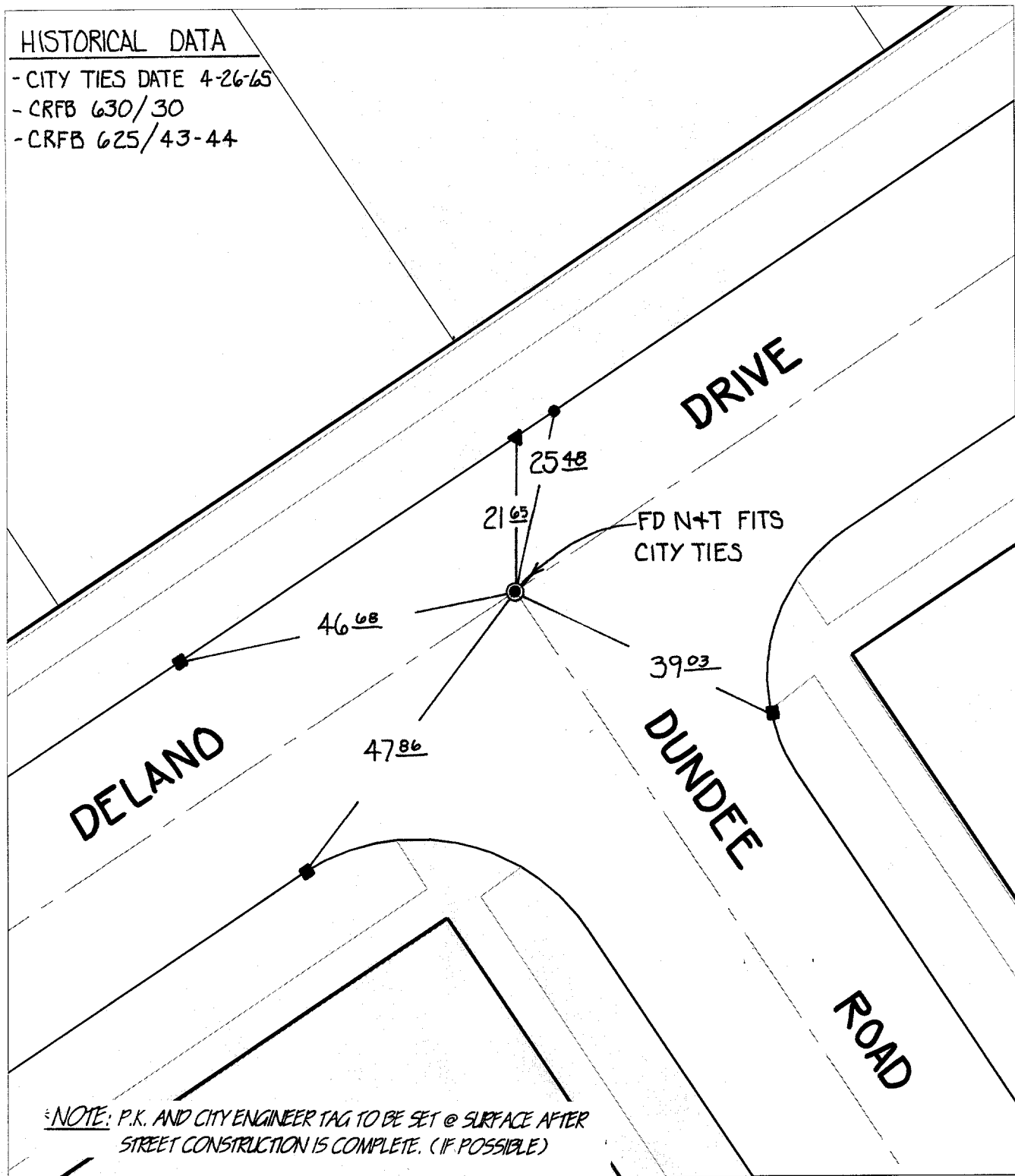


SWING TIES

2251.716

HISTORICAL DATA

- CITY TIES DATE 4-26-65
- CRFB 630/30
- CRFB 625/43-44



NOTE: P.K. AND CITY ENGINEER TAG TO BE SET @ SURFACE AFTER STREET CONSTRUCTION IS COMPLETE. (IF POSSIBLE)

- ✕ FD. Ramset Nail on T/C
- FD. "C" Nail on T/C

- FD. LD. & TK. on T/C
- Set LD. & TK. on T/C

Street:

DELANO DRIVE

X-Street:
OFFICIAL USE ONLY

DUNDEE ROAD

Scale: 1" = 20'

Date: 06/15/00

Drawn by: SURVEY

W.O.:

F.B.:

OFFICIAL TIE PLAT CITY OF RIVERSIDE

These ties are for the purpose of perpetuating the found monumentation. No claim is made as to the relationship of the points or lines shown hereon to true boundary locations.



Sheet 1 of 1

File No.: