

2284.71F

Street: DELTA WAY

X-Street: MORRISTOWN & GOLDEN AVE
OFFICIAL USE ONLY

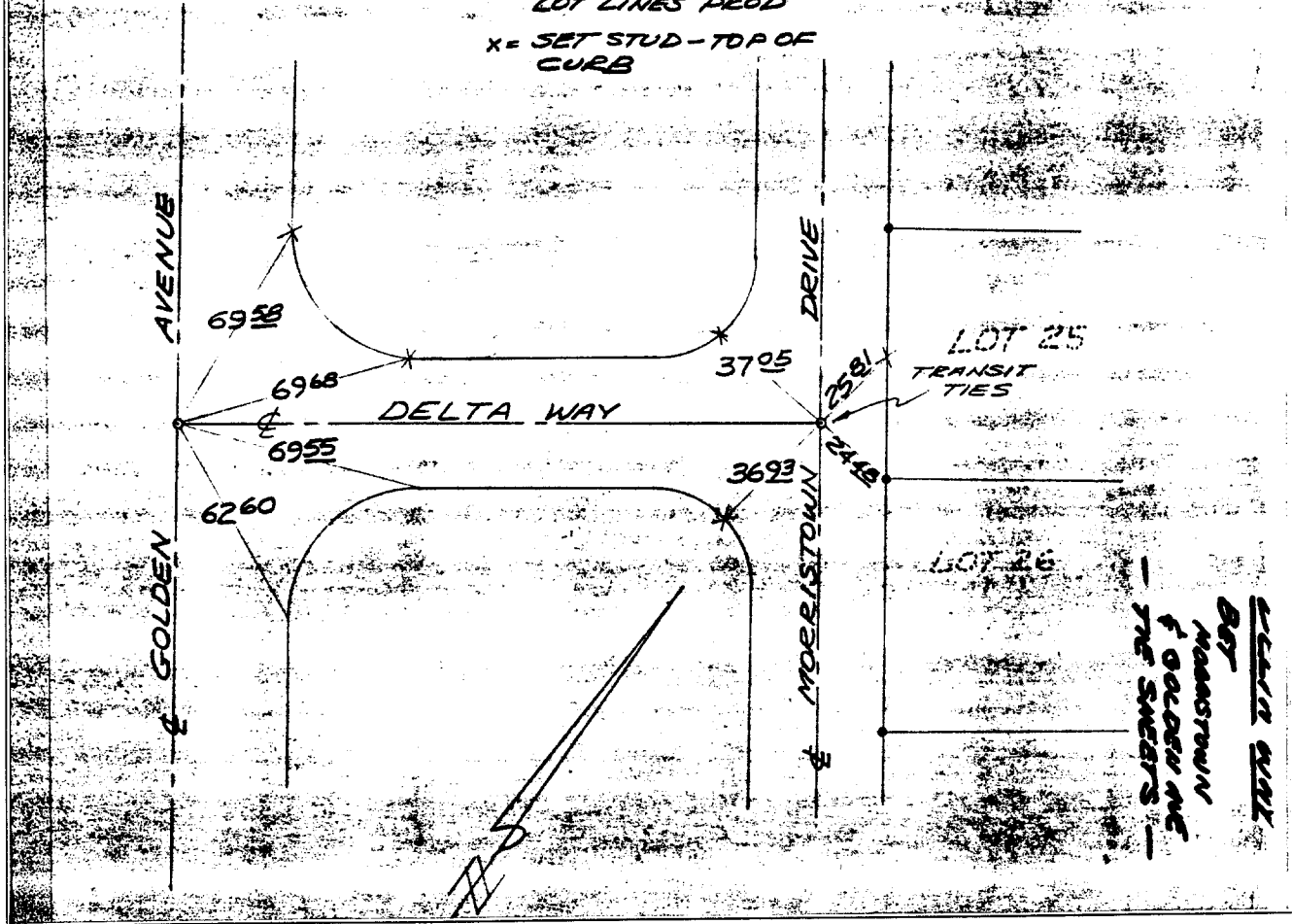
DELTA WAY
& MORRISTOWN
& GOLDEN AVE

HISTORICAL
DATA
A. A. WEBB
FB 1032/199
TRACT 6763-2

SWING TIES

CREW
BAILEY
LOUFEK
7-3-78

- = SET 1" IP-FLUSH TAGGED RCE 9876
- = SET STUD & TAG RCE 9876 ON TOP OF CURB ON SIDE LOT LINES PROD
- x = SET STUD - TOP OF CURB



- ✕ FD. Ramset Nail on T/C
- FD. LD. & TK. on T/C
- FD. "C" Nail on T/C
- Set LD. & TK. on T/C

OFFICIAL TIE PLAT CITY OF RIVERSIDE

These ties are for the purpose of perpetuating the found monumentation. No claim is made as to the relationship of the points or lines shown hereon to true boundary locations.

Scale:
Date:
Drawn by:
W.O.:
F.B.:

Sheet 1 of 1
File No.: