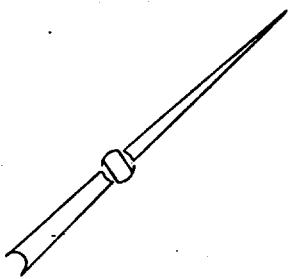
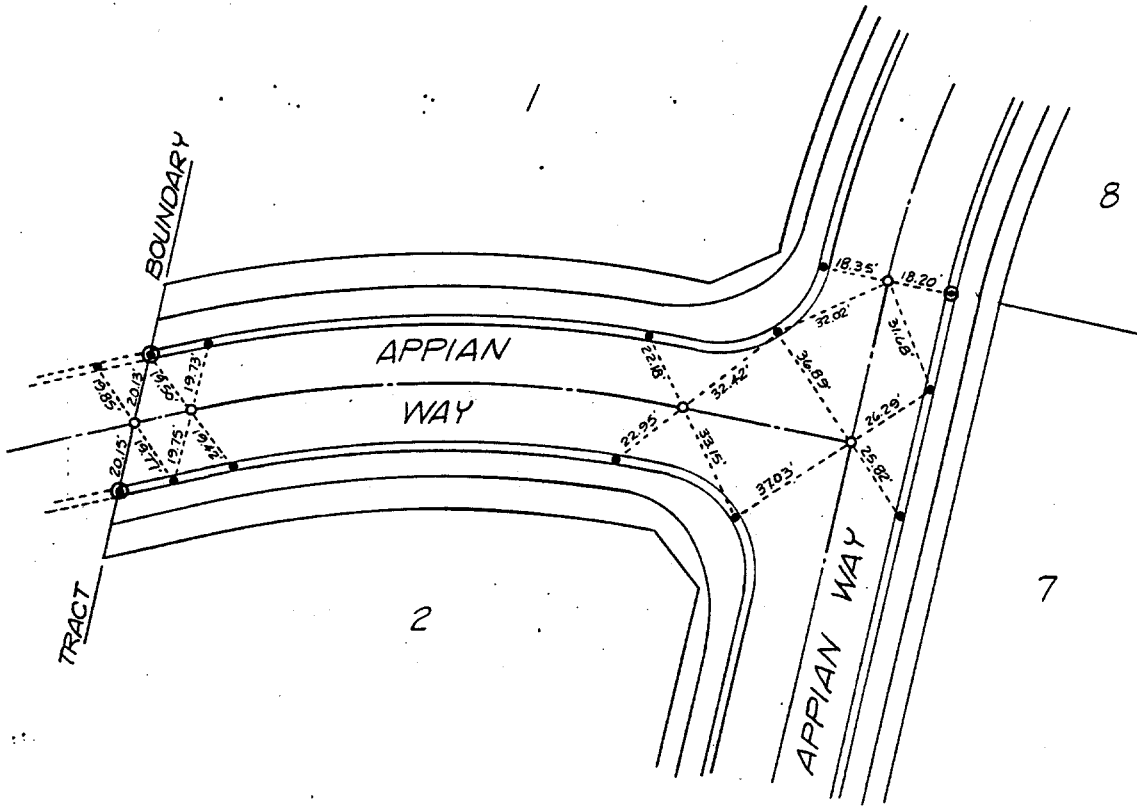


229.TIF



- Set Nail in Curb.
  - ⊙ Set Nail and Tag, R.C.E. 16050 In Curb.
  - Set 1 1/2" O.D. Iron Pipe, Tagged R.C.E. 10050.
- Flush.

NOTE: ALL TRANSIT TIES

FIELD CKD  
12-8-82  
J.W.S.

APPIAN WAY

Street: APPIAN WAY  
X-Street: \_\_\_\_\_  
OFFICIAL USE ONLY

W.O. 02140 Sheet 2 of 3 Sheets

L A WAINSCOTT & ASSOCIATES  
CIVIL ENGINEERS  
GRAND TERRACE, CALIFORNIA  
(714) 824-1775

CITY OF RIVERSIDE

TRACT No. 10772

- ✕ FD. Ramset Nail on T/C
- FD. "C" Nail on T/C

- FD. LD. & TK. on T/C
- Set LD. & TK. on T/C

Scale:  
Date:  
Drawn by:  
W.O.:  
F.B.:

## OFFICIAL TIE PLAT

### CITY OF RIVERSIDE

These ties are for the purpose of perpetuating the found monumentation. No claim is made as to the relationship of the points or lines shown hereon to true boundary locations.

Sheet 1 of 1  
File No.: