

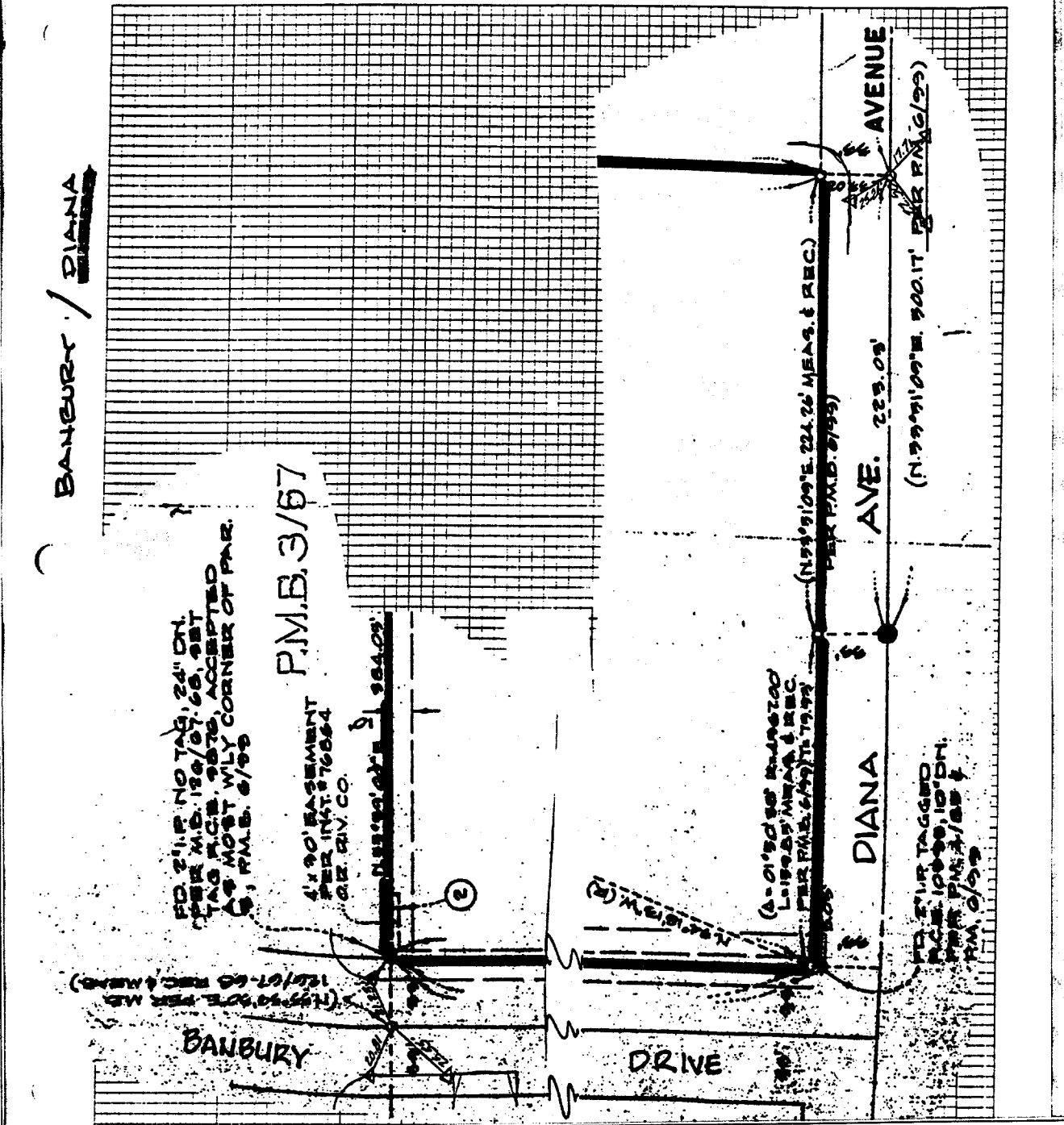
2313. TIF

SURVEY OF TR 13363, & TIES DATE 9-25-96 J.O. 77-303
 PARTY NO. AND MEMBERS B. DANSON, R. HERNANDEZ F.B. H/A PAGE —
 M.S. NOTES CALC'D BY: CALC'S CHECKED BY: MAP NO.: WEATHER:

Street: DIANA AVE

OFFICIAL USE ONLY

X-Street: BANBURY DRIVE



BANBURY / DIANA

P.M.B. 3/57

FD 211P NO TAG, 24" DN.
 PER M.B. 12/07/00, SET
 TAG M.C.R. 9878, ACCEPTED
 AS MOST WLY CORNER OF PAR.
 C, P.M.B. 8/99

6' X 90' EASEMENT
 PER INT. 7/88 &
 G.E. RIV. CO.

(N 54°51'09"E 224.26' MEAS. & REC.)
 PER P.M.B. 8/99

(S 21°11'00"E 100.17' PER P.M.B. 12/09)

(S 69°09'40"E 210.00' PER P.M.B. 4/05 & 8/99)

BANBURY DRIVE

DIANA AVE. 223.03'

DIANA AVE.

- ✕ FD. Ramset Nail on T/C
- FD. "C" Nail on T/C

- FD. LD. & TK. on T/C
- Set LD. & TK. on T/C

Scale:
 Date:
 Drawn by:
 W.O.:
 F.B.:

OFFICIAL TIE PLAT

CITY OF RIVERSIDE

These ties are for the purpose of perpetuating the found monumentation. No claim is made as to the relationship of the points or lines shown hereon to true boundary locations.

Sheet 1 of 1
 File No.: