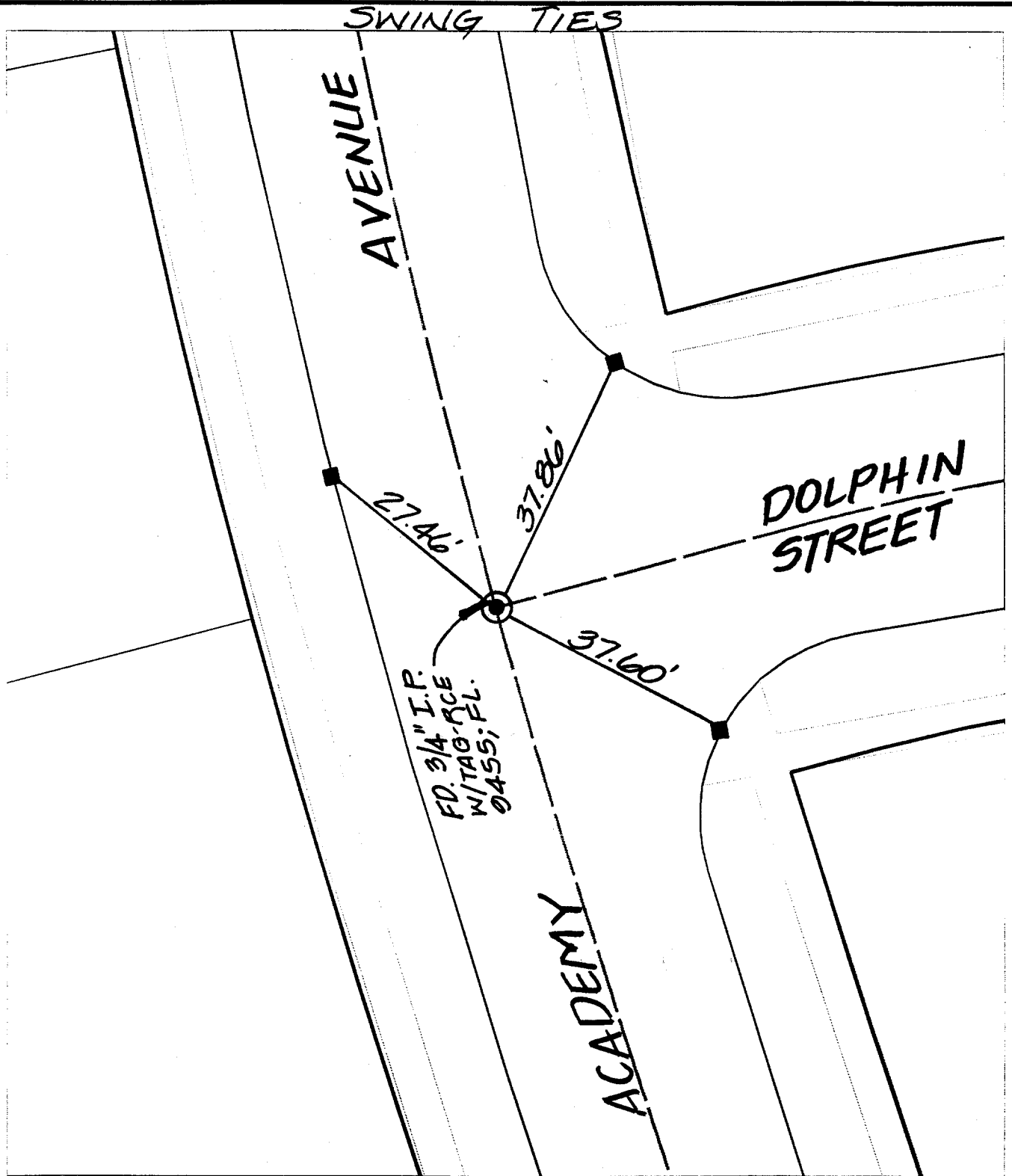


DOLPHIN ST

X-Street:  
OFFICIAL USE ONLY

ACADEMY

Street:



- ✕ FD. Ramset Nail on T/C
- FD. "C" Nail on T/C

- FD. LD. & TK. on T/C
- Set LD. & TK. on T/C

Scale: 1" = 20'

Date: 09/16/98

Drawn by: scurtis

W.O.:

F.B.:

## OFFICIAL TIE PLAT

### CITY OF RIVERSIDE

*These ties are for the purpose of perpetuating the found monumentation. No claim is made as to the relationship of the points or lines shown hereon to true boundary locations.*



Sheet 1 of 1

File No.: