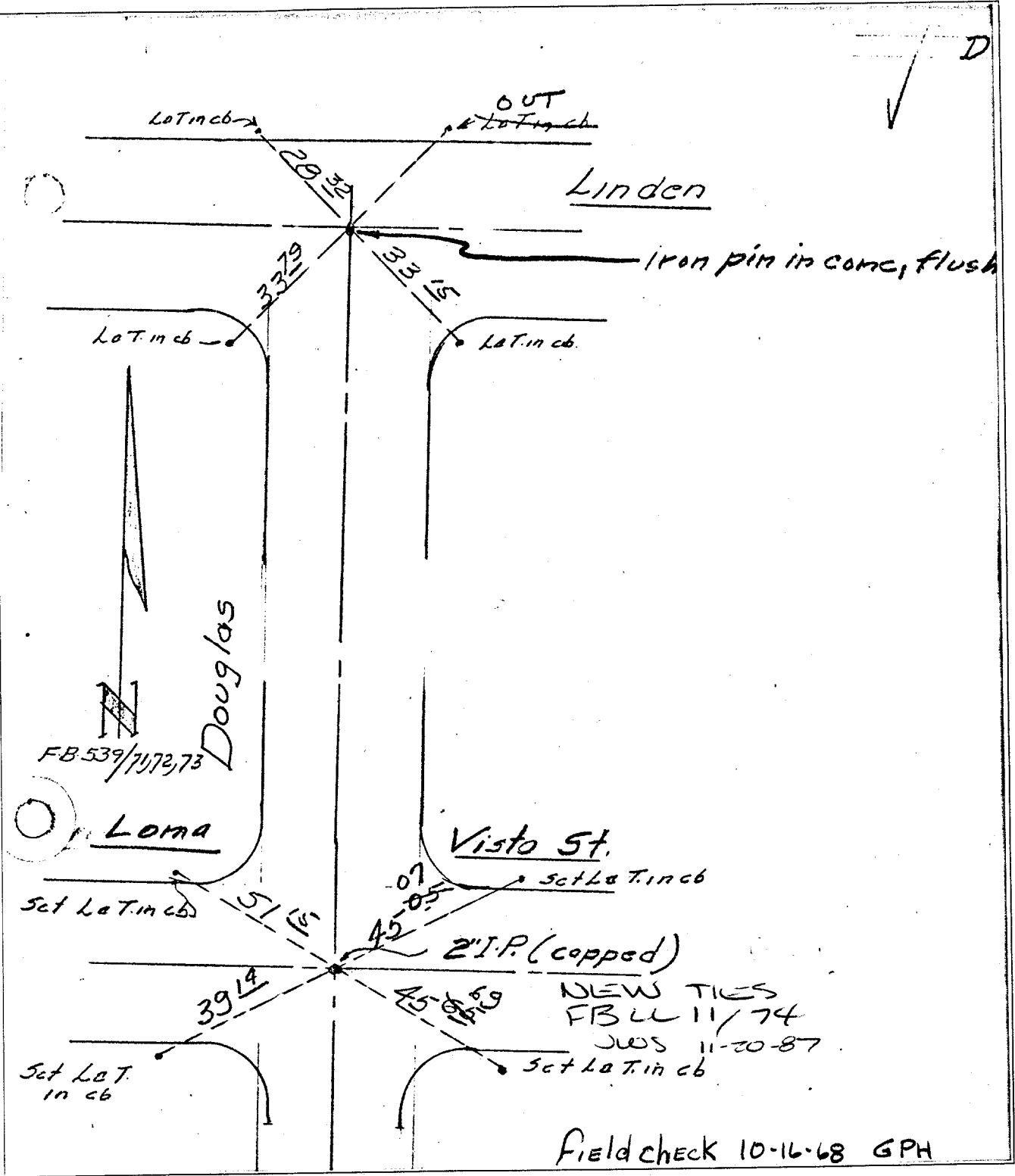


Street: Douglas

X-Street: LINDEN

OFFICIAL USE ONLY



- ✕ FD. Ramset Nail on T/C
- FD. LD. & TK. on T/C
- FD. "C" Nail on T/C
- Set LD. & TK. on T/C

Scale:
Date:
Drawn by:
W.O.:
F.B.:

OFFICIAL TIE PLAT
CITY OF RIVERSIDE

*These ties are for the purpose of perpetuating the found
monumentation. No claim is made as to the relationship of
the points or lines shown hereon to true boundary locations.*

Sheet 1 of 1
File No.:

Field check 10-16-68 GPH

NEW TIES
FB LL 11/74
JWS 11-20-87

2" I.P. (copped)

iron pin in conc, flush

Linden

Douglas

Loma

Visto St.

FB 539/71/72,73

