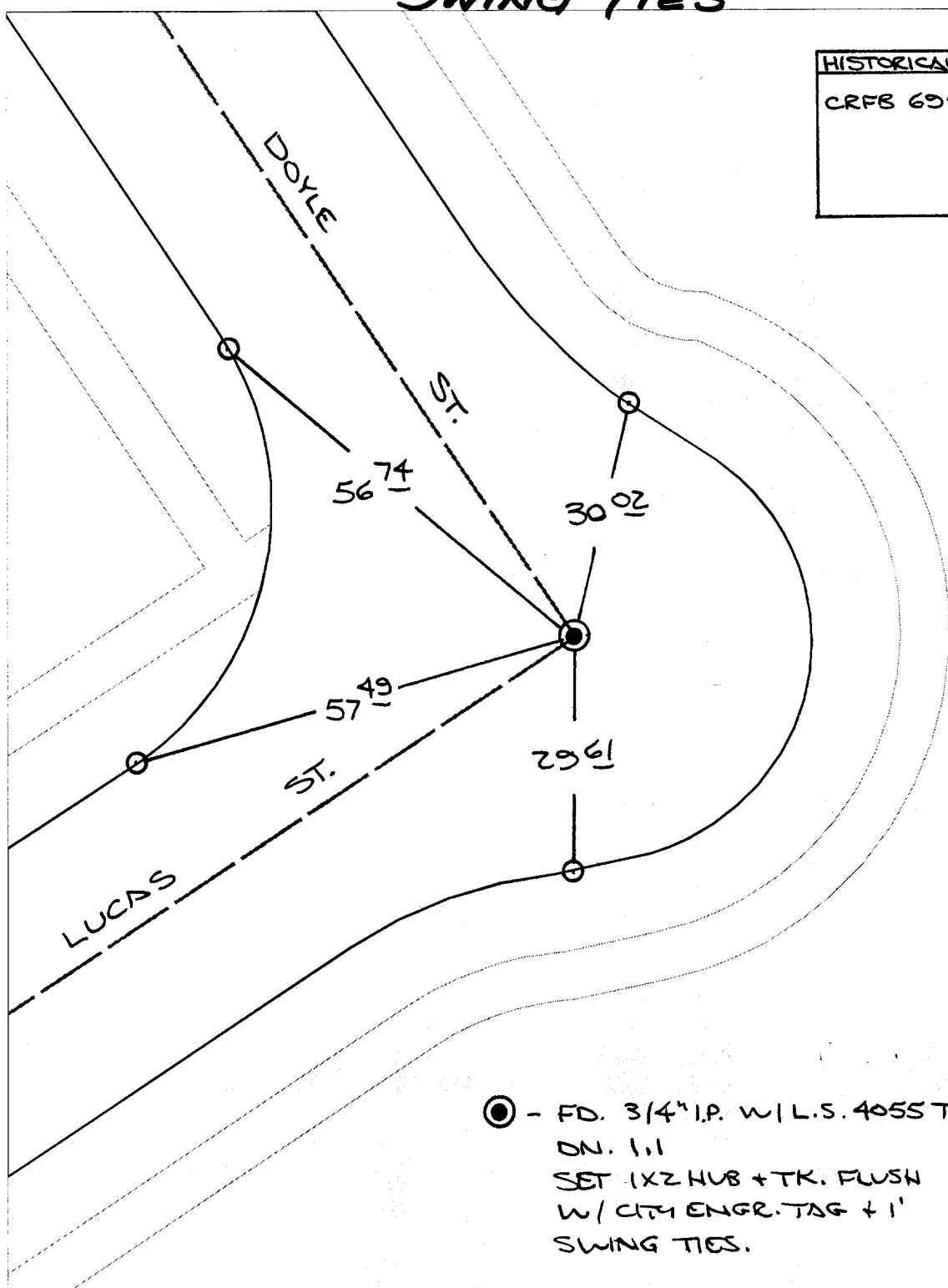


2394. TIF

"SWING TIES"

HISTORICAL DATA
CRFB 695170



● - FD. 3/4" I.P. W/ L.S. 4055 TAG ON. 1.1
SET 1X2 HUB + TK. FLUSH W/ CITY ENGR. TAG + 1" SWING TIES.

- ✕ FD. Ramset Nail on T/C
- FD. "C" Nail on T/C
- FD. LD. & TK. on T/C
- Set LD. & TK. on T/C

Street:

DOYLE ST

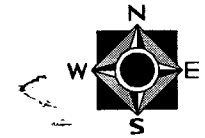
X-Street:
OFFICIAL USE ONLY

LUCAS ST

Scale: 1" = 20'
Date: 03/02/99
Drawn by: scurtis *MS*
W.O.:
F.B.:

OFFICIAL TIE PLAT
CITY OF RIVERSIDE

These ties are for the purpose of perpetuating the found monumentation. No claim is made as to the relationship of the points or lines shown hereon to true boundary locations.



Sheet 1 of 1
File No.: