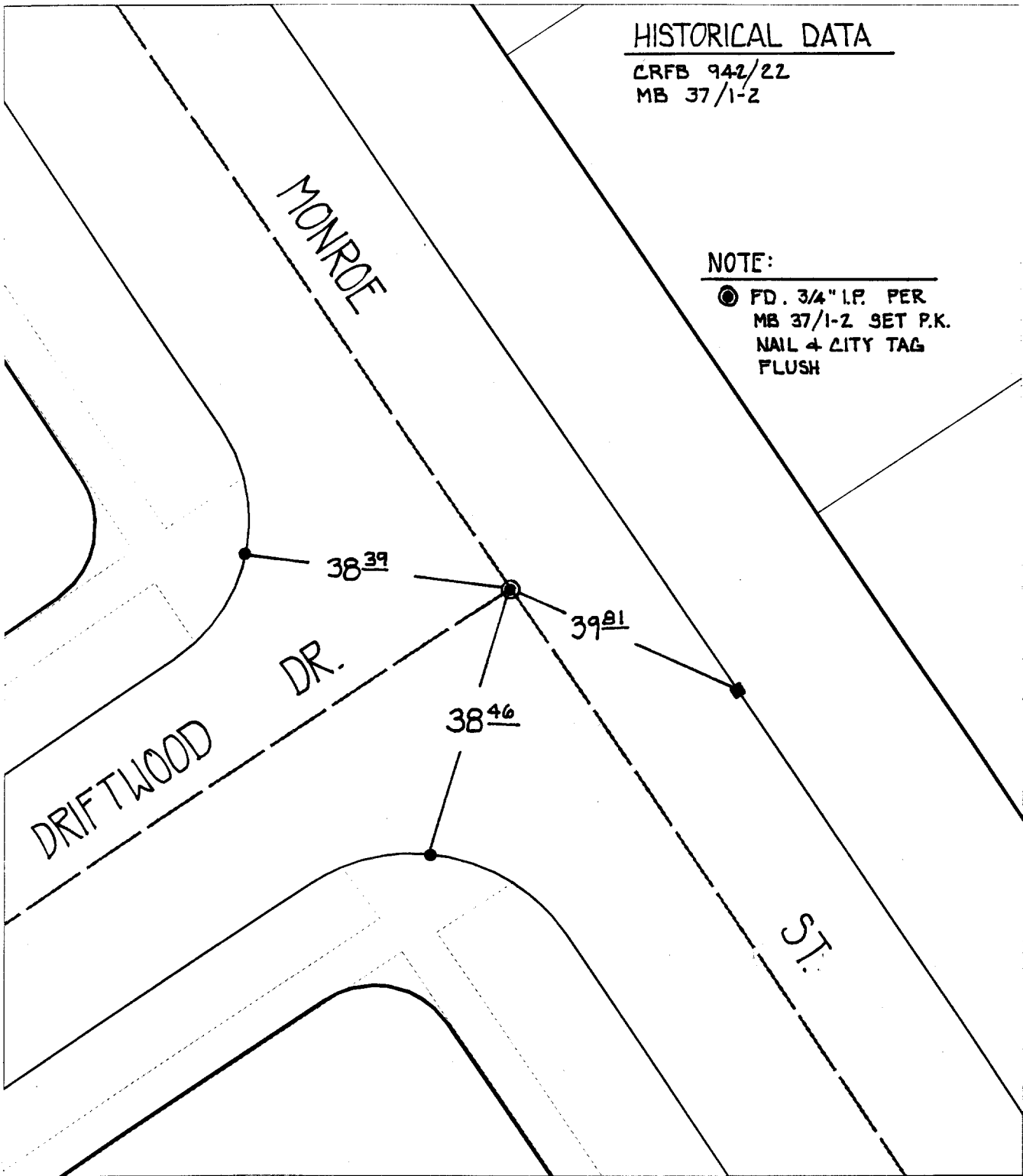


HISTORICAL DATA

CRFB 942/22
MB 37/1-2

NOTE:

● FD. 3/4" I.P. PER
MB 37/1-2 SET P.K.
NAIL & CITY TAG
FLUSH



× FD. Ramset Nail on T/C
■ FD. "C" Nail on T/C

● FD. LD. & TK. on T/C
○ Set LD. & TK. on T/C

Street:

DRIFTWOOD DR.

OFFICIAL USE ONLY

X-Street:

MONROE ST.

Scale: 1" = 20'

Date: 08/05/99

Drawn by: L. Harris

W.O.:

F.B.:

OFFICIAL TIE PLAT
CITY OF RIVERSIDE

*These ties are for the purpose of perpetuating the found
monumentation. No claim is made as to the relationship of
the points or lines shown hereon to true boundary locations.*



Sheet 6 of 6

File No.: